

EL DORADO IRRIGATION DISTRICT

SUBJECT: Update on reapportioning District divisions.

PREVIOUS BOARD ACTION

August 22, 2011 – Board adopted Resolution No. 2011-016, establishing new division boundaries that provided for near equal division population.

May 24, 2021 – Board considered information item on reapportioning District divisions in 2021.

BOARD POLICIES (BP), ADMINISTRATIVE REGULATIONS (AR), BOARD AUTHORITY

BP 1010 Introduction

BP 2030 Role of the General Counsel

SUMMARY OF ISSUE

The 2020 decennial census triggers a mandatory legal duty for the District to adjust its division boundaries. Reapportionment must comply with state law and with constitutional principles that ensure our ratepayers continue to receive fair and equal representation. District staff have performed preliminary analysis on the 2020 census and other relevant data. The purpose of this item is to share this information and receive input from the Board in public.

BACKGROUND/DISCUSSION

The U.S. Census Bureau released redistricting counts to the states in September. Although Federal law requires release of the detailed census data no later than April 1, the federal government delayed releasing the data due to COVID-19-related complications in gathering data, unforeseen complexities in data processing due to increased response methods (internet, phone, paper self-response, administrative records, and visits by enumerators), in addition to standard processing anomalies.

Under existing law, special districts generally have one of two deadlines for completion of the redistricting process: November of the year preceding a general election or 180 days prior to the general election during which candidates for the special district will appear on the ballot. The latter deadline applies to the District. Elections Code section 22000(d) states, "No change in division boundaries may be made within 180 days preceding the election of any director." The next Board election (Divisions 2 and 4) will occur on November 8, 2022. Therefore, under normal circumstances, no change in boundaries could go into effect between May 12 and November 7, 2022.

Unfortunately, Senate Bill (SB) 594, which was recently enacted by the California legislature, compresses the timeline upon which the District must complete its redistricting process. Under SB 594, all special districts would now be required to complete and submit revised divisions by April 17, 2022, unless their election is not held at the same time as the general election. This new deadline would be 205 days before the general election. These changes would only stay in effect for this redistricting cycle, and would sunset in 2023, making this a one-time shift in deadlines. This new deadline will significantly increase the amount of time districts with a November deadline currently face, providing an additional five months, but would shorten the timeline for those, like EID, with the 180 day requirement by 25 days.

Accordingly, the District must complete and submit revised divisions by April 17, 2022.

Redistricting Update

As noted above, the District received redistricting data from the U.S. Census Bureau in September. The data are not perfect, both because they represent a snapshot in time and because census-tract borders do not correspond perfectly to the boundaries of the District's service area. To illustrate this, consider that the Federal census identified 41 individual census tracts that intersect the District's boundaries. Within each tract there are an average of 61 blocks. Each block contains its own unique population and demographic characteristics. After importing the census data into the District's geographic information system, District staff identified 654 census blocks that were partially within and partially outside of the District's service boundaries. The District had to apply interpretation and estimation to the census data received – a process that took considerable time and effort – to determine how much of each block's population to include within the District's service area and how much to exclude. District staff will further describe this process in more detail during the Board's consideration of this information item.

The results of this preliminary analysis are as follows. Overall, District population from the 2020 Census is 132,206. This represents an increase in population of 10,106 from the 2010 Census, or a cumulative growth in population of approximately 8%. As expected, most of the growth occurred within District Divisions 2 and 5, which both cover portions of El Dorado Hills south of Highway 50.

The table below represents the growth in population per division from 2010 to 2020 and the corresponding percent within each division of the total District population:

Division	2010 Census Population	2020 Census Population	Percent of Growth	Percent of Total Population
1	24,308	25,022	3%	19%
2	24,497	28,850	18%	22%
3	24,318	24,763	2%	19%
4	24,481	25,800	5%	19%
5	24,496	27,771	13%	21%
Total	122,100	132,206	8%	—

Given the total District population of 132,206, the target population for each division will now be 26,441.

Next Steps

Both state law and Board policy require the District to adjust its division boundaries in the wake of the 2020 Federal census to ensure population is equally distributed among the divisions and avoid the imposition of racial, ethnic, or linguistic impediments to citizens' voting rights in violation of the Equal Protection Clause in the Fourteenth Amendment to the United States Constitution.

Over the coming weeks, District staff intend to develop division boundary alternatives that each comply with the two mandatory criteria of population equality (targeting approximately 26,441 persons per division) and anti-discrimination. Besides the two mandatory criteria of population equality and anti-discrimination, Elections Code section 22000(a) states that the reapportionment "may" give consideration to the following factors: (1) topography, (2) geography, (3) cohesiveness, contiguity, integrity, and compactness of territory, and (4) community of interests of the division." Under state law, consideration of these factors is optional; however, Board Policy 1010 makes them mandatory.

Data likely to be useful in assessing individual secondary factors include: elevation, watershed boundaries, watercourses, major roads and road networks, boundaries of Community Regions and Rural Centers defined in the County's General Plan, boundaries of the District's Deer Creek and El Dorado Hills wastewater collection systems, the District's recycled water service area, County-designated agricultural regions, regions of large-lot residential subdivisions, concentrations of multi-family housing, and the location, type, and intensity of future development under applicable County planning and zoning enactments.

District staff anticipate presenting the Board and public with the first draft alternative division maps in late January or early February 2022. District staff will continue to update the District's dedicated redistricting webpage with content as it becomes available. Additionally, staff intend to publish a press release informing the public about how to become involved in redistricting.

BOARD OPTIONS

None – Information only.

RECOMMENDATION


None – Information only.

ATTACHMENTS

None



Brian Poulsen
General Counsel



Jim Abercrombie
General Manager



REDISTRICTING

DECEMBER 13, 2021

PREVIOUS BOARD ACTION

- August 22, 2011 – Board adopted Resolution No. 2011-016, establishing new division boundaries that provided for near equal division population
- May 24, 2021 – Board considered information item on reapportioning District divisions in 2021

SUMMARY OF ISSUE

- The District must ensure that its division boundaries are consistent with federal and state law following the 2020 decennial census
- District staff have adapted 2020 census data to the District's current division boundaries
- Boundary adjustments are necessary to ensure equal population among divisions

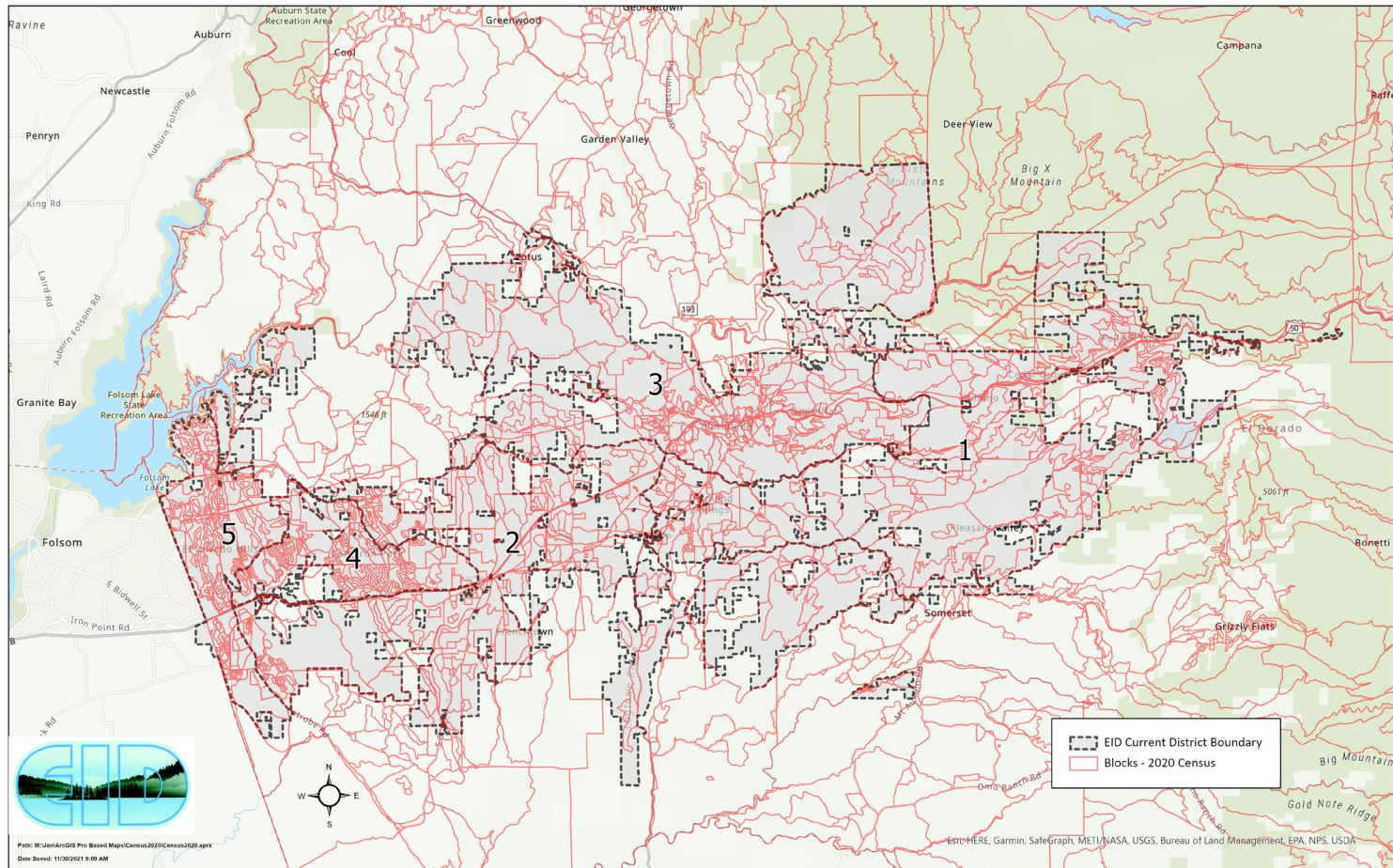
TIMELINE

- The U.S. Census Bureau released redistricting counts to the states September 2021
- Senate Bill 594 reduced timeline by 25 days – must be completed by April 17, 2022
- Normally no change in boundaries could go into effect between May 12 and November 7, 2022
- The next Board election is November 8, 2022, for Divisions 2 and 4

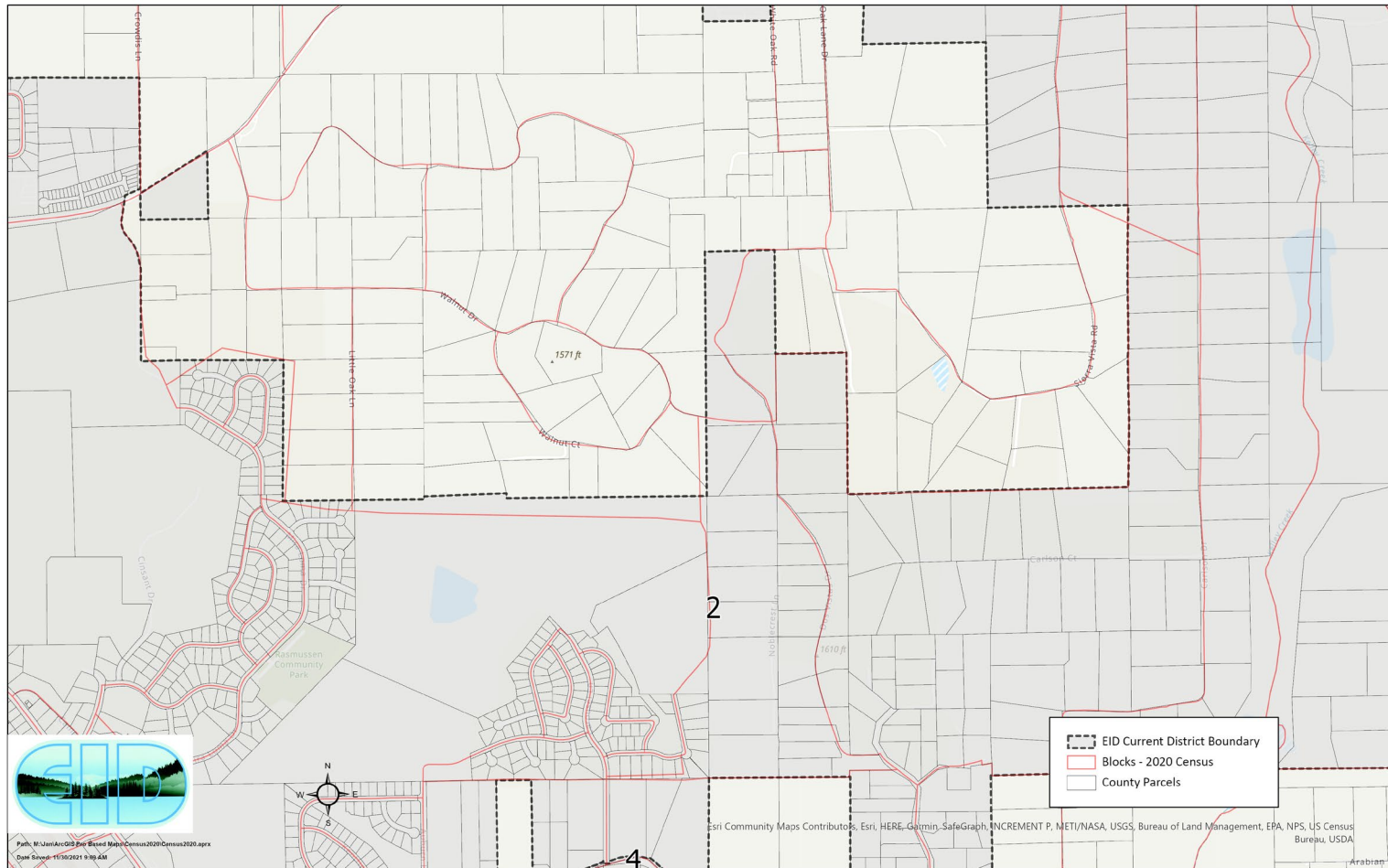
CENSUS DATA ADAPTATION

- Federal census identified 41 census tracts that intersect District's boundaries
- Each tract has an average of 61 blocks
- Each block contains a unique population and demographic
- District staff identified 654 census blocks partially within and partially outside District boundaries

CENSUS DATA ADAPTATION



CENSUS DATA ADAPTATION



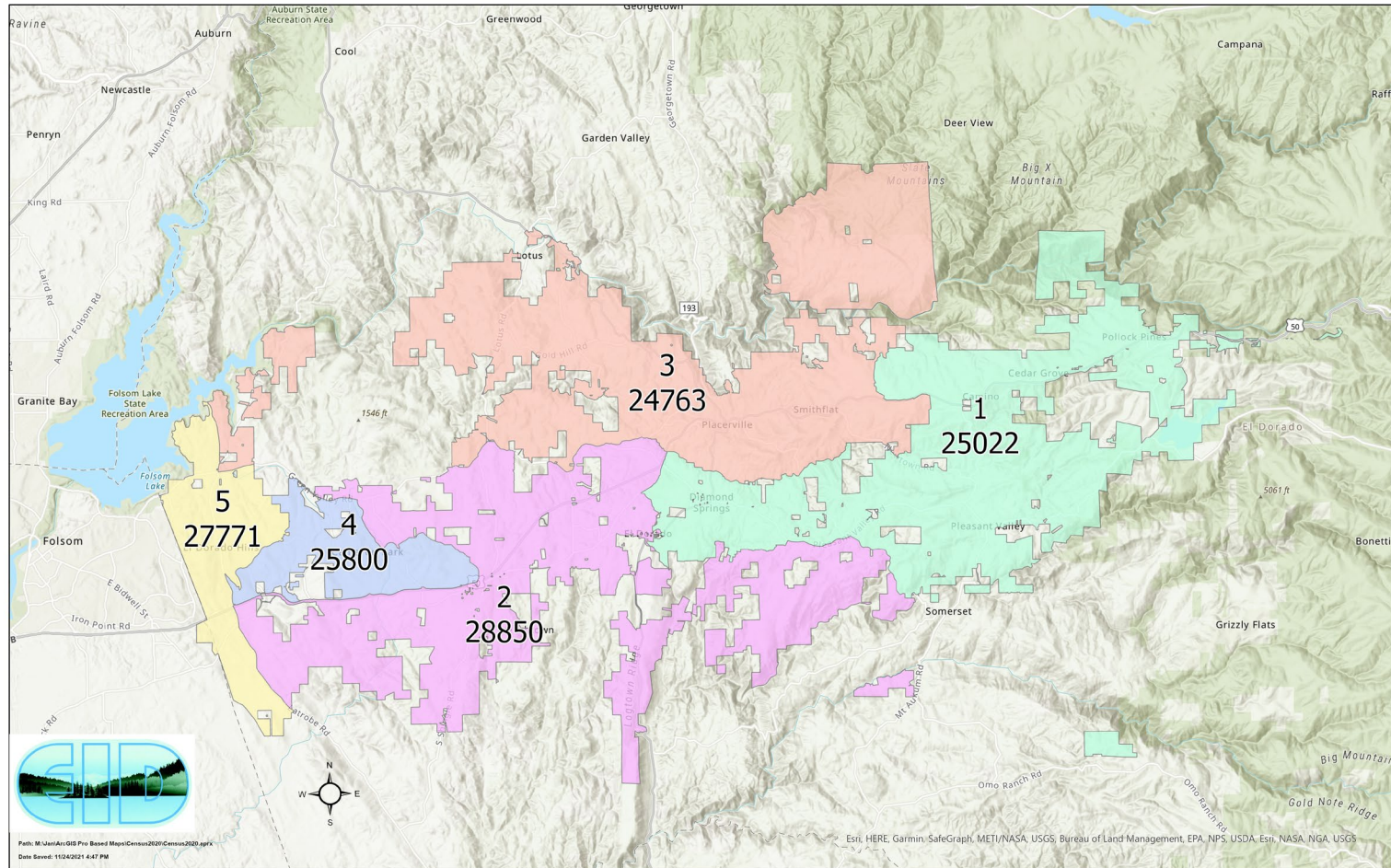
RESULTS OF CENSUS ANALYSIS

- Currently the total District population is 132,206, therefore the target population for each division is 26,441
- Most of the growth between 2010 and 2020 occurred within Divisions 2 and 5 (El Dorado Hills)

RESULTS OF CENSUS ANALYSIS

Division	2010 Population	2020 Census Population	Percent of Growth	Percent of Total Population	Difference from Average of 26,441
1	24,308	25,022	3%	19%	-1,619
2	24,497	28,850	18%	22%	2,209
3	24,318	24,763	2%	19%	-1,878
4	24,481	25,800	5%	19%	-841
5	24,496	27,771	13%	21%	1,130
Total	122,100	132,206	8%	—	—

CENSUS DATA ADAPTATION



CRITERIA FOR REDISTRICTING

- District staff intend to develop division boundary alternatives in compliance with the two mandatory criteria
 - Population equality: population is equally distributed among the divisions
 - Anti-discrimination: avoid the imposition of racial, ethnic, or linguistic impediments to citizens' voting rights

CRITERIA FOR REDISTRICTING

El Dorado County - Race and Ethnicity	Population	Percent of Total
Total:	191,185	—
Hispanic or Latino	26,459	13.84%
Not Hispanic or Latino:	164,726	86.16%
Population of one race:	153,365	80.22%
White alone	140,141	73.30%
Black or African American alone	1,436	0.75%
American Indian and Alaska Native alone	1,273	0.67%
Asian alone	9,024	4.72%
Native Hawaiian and Other Pacific Islander alone	276	0.14%
Some Other Race alone	1,215	0.64%

- Source: United States Census Bureau
https://data.census.gov/cedsci/table?q=el%20dorado%20county&t=Race%20and%20Ethnicity&g=0100000US&tid=DECENNIALPL2020.P2&vintage=2017&layer=state&cid=DP05_0001E

CRITERIA FOR REDISTRICTING

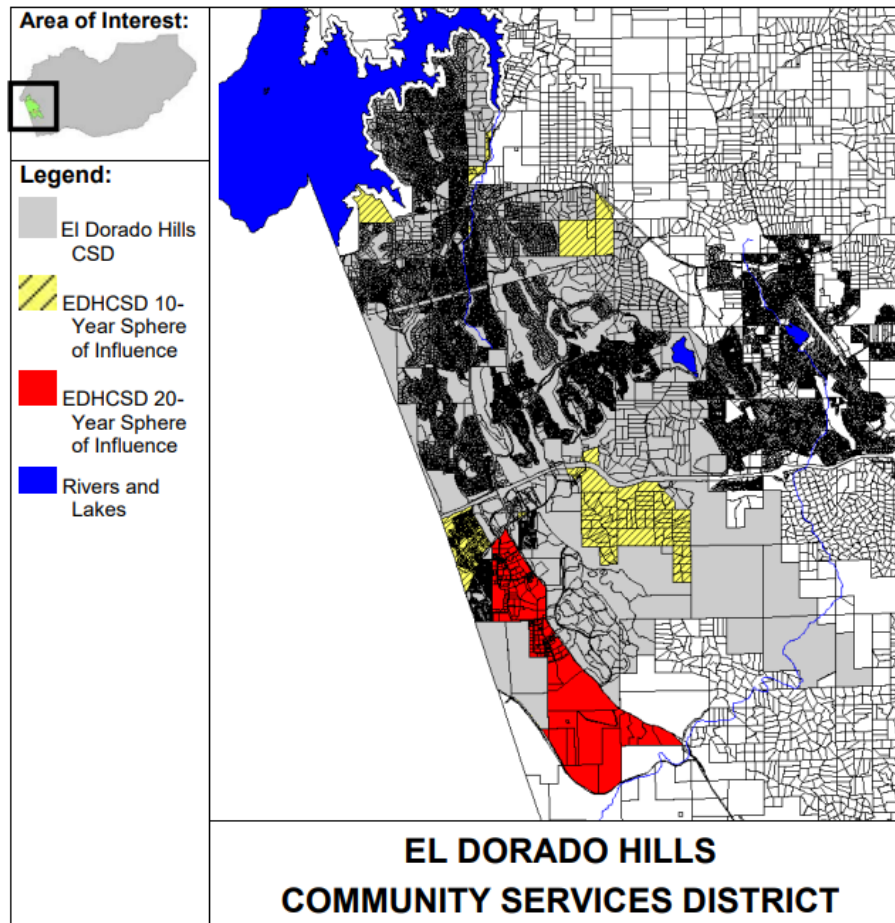
- Other secondary factors to consider:
 - Topography
 - Geography
 - Cohesiveness, contiguity, integrity, and compactness of territory
 - Community of interests of the division

CRITERIA FOR REDISTRICTING

Secondary factors include:

- Elevation
- Watershed boundaries
- Watercourses
- Major roads and road networks
- Boundaries of Community Regions and Rural Centers defined in the County's General Plan
- Boundaries of the District's Deer Creek and El Dorado Hills wastewater collection systems
- The District's recycled water service area
- County-designated agricultural regions
- Regions of large-lot residential subdivisions
- Concentrations of multi-family housing
- The location, type, and intensity of future development under applicable County planning and zoning enactments

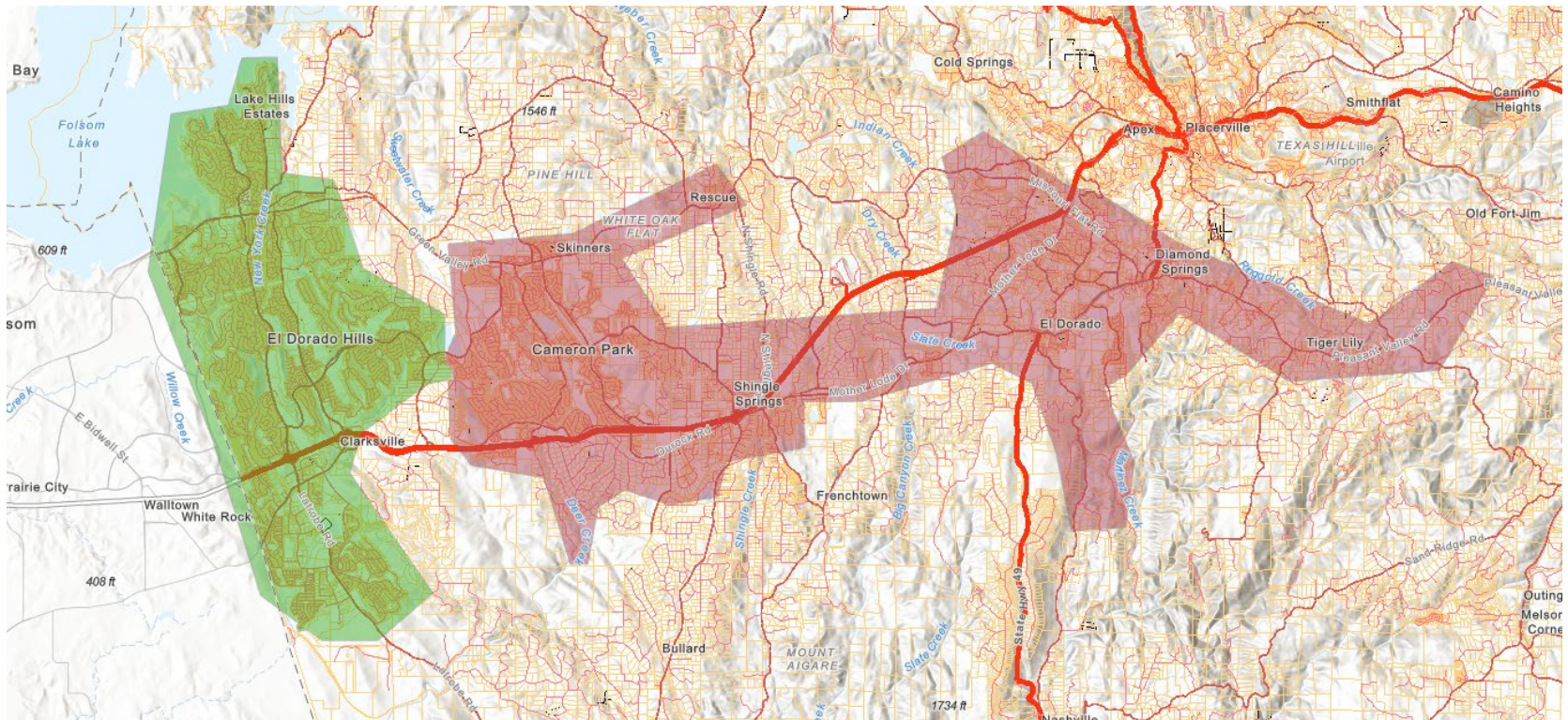
CRITERIA FOR REDISTRICTING



Source: El Dorado County Local Agency Formation Commission
https://www.edlafco.us/files/1223037a9/01-08_EDHCSDSOI.pdf

CRITERIA FOR REDISTRICTING

Wastewater Collections Systems



■ El Dorado Hills

■ Deer Creek

PUBLIC OUTREACH

El Dorado Irrigation District
Serving people, agriculture, businesses, and the environment in northern California's El Dorado County since 1925

ABOUT US CUSTOMERS OUR SERVICES RECREATION DOING BUSINESS WITH EID REGULATORY I WANT TO...

EID Response to COVID-19
+ District Information
+ Document Library
Mission and Guiding Principles
+ Board of Directors
+ Departments
+ Community Outreach
+ Employment
+ ADA
Other Agency Links
+ Project Updates
Enterprise System Catalog
Government Compensation in California Website (Gov. Code Sect. 53908)
Financial Transaction Report (Gov. Code Sect. 53891a)
Redistricting 2021

About Us »
Redistricting 2021

Font size: + - + Share & Bookmark Feedback Print

EID Redistricting

Welcome to the EID redistricting page. Please bookmark this page and check back frequently for the most up-to-date information.

- Created dedicated page on District website:
- www.eid.org/about-us/redistricting-2021

NEXT STEPS

- Press release
- Gather and analyze demographic information
- Prepare district map alternatives
- Board/Public workshop in January

QUESTIONS?

BOARD OPTIONS

- None – Information only