

EL DORADO IRRIGATION DISTRICT

SUBJECT: Update on reapportioning District divisions.

PREVIOUS BOARD ACTION

August 22, 2011 – Board adopted Resolution No. 2011-016, establishing new division boundaries that provided for near equal division population.

May 24 and December 13, 2021 – Board considered information item on reapportioning District divisions in 2021.

BOARD POLICIES (BP), ADMINISTRATIVE REGULATIONS (AR), BOARD AUTHORITY

BP 1010 Introduction

BP 2030 Role of the General Counsel

SUMMARY OF ISSUE

The 2020 decennial census triggers a mandatory legal duty for the District to adjust its division boundaries. Reapportionment must comply with state law and with constitutional principles that ensure our ratepayers continue to receive fair and equal representation. The purpose of this item is to update the Board on staff progress and receive input from the Board in public.

BACKGROUND/DISCUSSION

Redistricting Update

Since the last public workshop on December 13, 2021, District staff have begun to develop division boundary alternatives that comply with the two mandatory criteria of population equality (targeting approximately 26,441 persons per division) and anti-discrimination. Besides the two mandatory criteria of population equality and anti-discrimination, Elections Code section 22000(a) states that the reapportionment "may" give consideration to the following secondary factors: (1) topography, (2) geography, (3) cohesiveness, contiguity, integrity, and compactness of territory, and (4) community of interests of the division. Under state law, consideration of these factors is optional; however, Board Policy 1010 makes them mandatory.

Staff have analyzed and will present to the Board informational maps that reflect data useful in assessing individual secondary factors including: major roads and road networks, boundaries of Community Regions and Rural Centers defined in the County's General Plan, boundaries of the District's Deer Creek and El Dorado Hills wastewater collection systems, the District's recycled water service area, County-designated agricultural regions, regions of large-lot residential subdivisions, concentrations of multi-family housing, and the location, type, and intensity of future development under applicable County planning and zoning enactments.

While each of the above referenced secondary factors are important to consider, staff seeks direction from the Board and public on how to develop mapping alternatives. To assist in this exercise, it may be helpful to consider certain key analytical factors used in 2011 to evaluate mapping alternatives.

In 2011, the Board directed General Counsel to form a citizens' advisory committee to help develop mapping alternatives for consideration. The committee considered many factors in the

development and evaluation of alternatives, including the many informational maps referenced above, but ultimately narrowed their evaluation to three key questions in their deliberations: (1) how to treat communities of interest associated with EID services; (2) how to split populous communities like El Dorado Hills, Cameron Park, Diamond Springs, El Dorado, and Placerville; and (3) how to minimize voter disruption. The following elaborates on these factors.

Service-related communities of interest: The 2010 Redistricting Committee believed that recycled water customers, sewer customers, and irrigation (Agriculture and Small Farm) customers were each important communities of interest within EID. The Committee considered alternatives that tried to spread these communities among several divisions, and alternatives that tried to concentrate them into fewer divisions. These two approaches reflect an endless debate in redistricting. The rationale for spreading is to maximize the number of Directors who will represent a particular community of interest. The rationale for concentrating is to maximize the strength of a community of interest's voice. The Committee presented four final map alternatives to the Board that took varying approaches to spreading or concentrating recycled water, sewer, and irrigation customers. Ultimately, the Board adopted an alternative that spread wastewater and recycled water customers among Divisions 2, 4, and 5; and spread agricultural and small farm customers among Divisions 1, 2, and 3.

In considering how to consolidate or spread current customers by their respective services, consider the following:

Services by Division:

Service Type	Division 1	Division 2	Division 3	Division 4	Division 5
Water	8,687	8,831	5,802	8,959	11,227
Sewer	1,612	4,625	355	8,311	10,493
Recycled Water	0	1,614	0	2,836	1,190

Water Meter Counts by Division:

Service Type	Division 1	Division 2	Division 3	Division 4	Division 5
Agricultural	201	309	388	9	9
Commercial	361	516	218	127	267
Fire Protection	67	150	41	61	135
Landscape	71	184	66	79	201
Multifamily	281	280	183	80	75
Small Farm	2	18	36	0	0
Single-family	7,703	7,373	4,863	8,603	10,536

Splitting/Consolidating Populous Communities: Preserving the integrity of communities is important, but sometimes impossible in order to ensure equal population among divisions. El Dorado Hills and Cameron Park contain the most densely populated areas of the District's service territory. It is, therefore, impossible to draw division lines that place each of these communities entirely in their own divisions. In 2011, the Board considered two mapping alternatives that used Highway 50 to divide El Dorado Hills and two map alternatives that did not. The eastern Division 5 boundaries were different in each of the four alternatives and two alternatives excluded some lands north of Green Valley Road, while two did not. Ultimately the Board adopted a final map that divided El Dorado Hills using Serrano Parkway to the north of Highway 50 and Latrobe Road to the south of Highway 50. Lands to the west of Serrano

Parkway and Latrobe Road are included in Division 5. Lands east of Serrano Parkway and north of Highway 50 included in Division 4. While lands east of White Rock Road and to the south of Highway 50 are included in Division 2. Some of the lands to the northeast of Green Valley Road are included in Division 3.

Cameron Park is also currently divided between Divisions 2 and 4, using Highway 50 to divide lands north and south and Cambridge Road and Meder Road divide lands to the east and west.

Diamond Springs/El Dorado and the communities of Camino and Pollock Pines are almost entirely contained within Division 1, while the City of Placerville, Lotus/Coloma, and Swansboro communities are entirely included in Division 3.

Subject to Board and public input, staff plan to present the Board with mapping alternatives that approach these populous communities in a variety of ways, some splitting, and some consolidating.

Voter Disruption: Redistricting always disrupts at least some voters by moving them from one division to another. The disruptions include temporary representation by a Board Member who never appeared on their ballot, and a changed voting cycle that temporarily either shortens the time between elections to two years, or lengthens it to six years. Shifts from an even-numbered to an odd-numbered division are the most disruptive: voters so affected will not vote from 2018 until 2024, and for more than three years, they will be represented by a director who never appeared on their ballot. Therefore, General Counsel recommends that the Board seek to minimize this particular type of voter disruption.

Next Steps

District staff anticipate presenting the Board and public with the first draft alternative division maps in late February. District staff will continue to update the District's dedicated redistricting webpage with content as it becomes available.

BOARD OPTIONS

None – Information only.

RECOMMENDATION

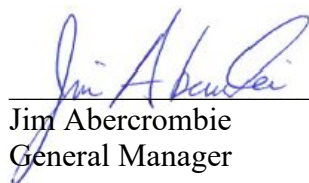
None – Information only.

ATTACHMENTS

None



Brian Poulsen
General Counsel



Jim Abercrombie
General Manager



REDISTRICTING

JANUARY 24, 2022

PREVIOUS BOARD ACTION

- August 22, 2011 – Board adopted Resolution No. 2011-016, establishing new division boundaries that provided for near equal division population
- May 24 and December 13, 2021 – Board considered information item on reapportioning District divisions in 2021

SUMMARY OF ISSUE

- The 2020 decennial census triggers a mandatory legal duty for the District to adjust its division boundaries
- Must comply with state law and constitutional principles to ensure ratepayers receive fair and equal representation

CRITERIA FOR REDISTRICTING

- District staff intend to develop division boundary alternatives in compliance with the two mandatory criteria
 - Population equality: population is equally distributed among the divisions (target approximately 26,441 persons)
 - Anti-discrimination: avoid the imposition of racial, ethnic, or linguistic impediments to citizens' voting rights

CRITERIA FOR REDISTRICTING

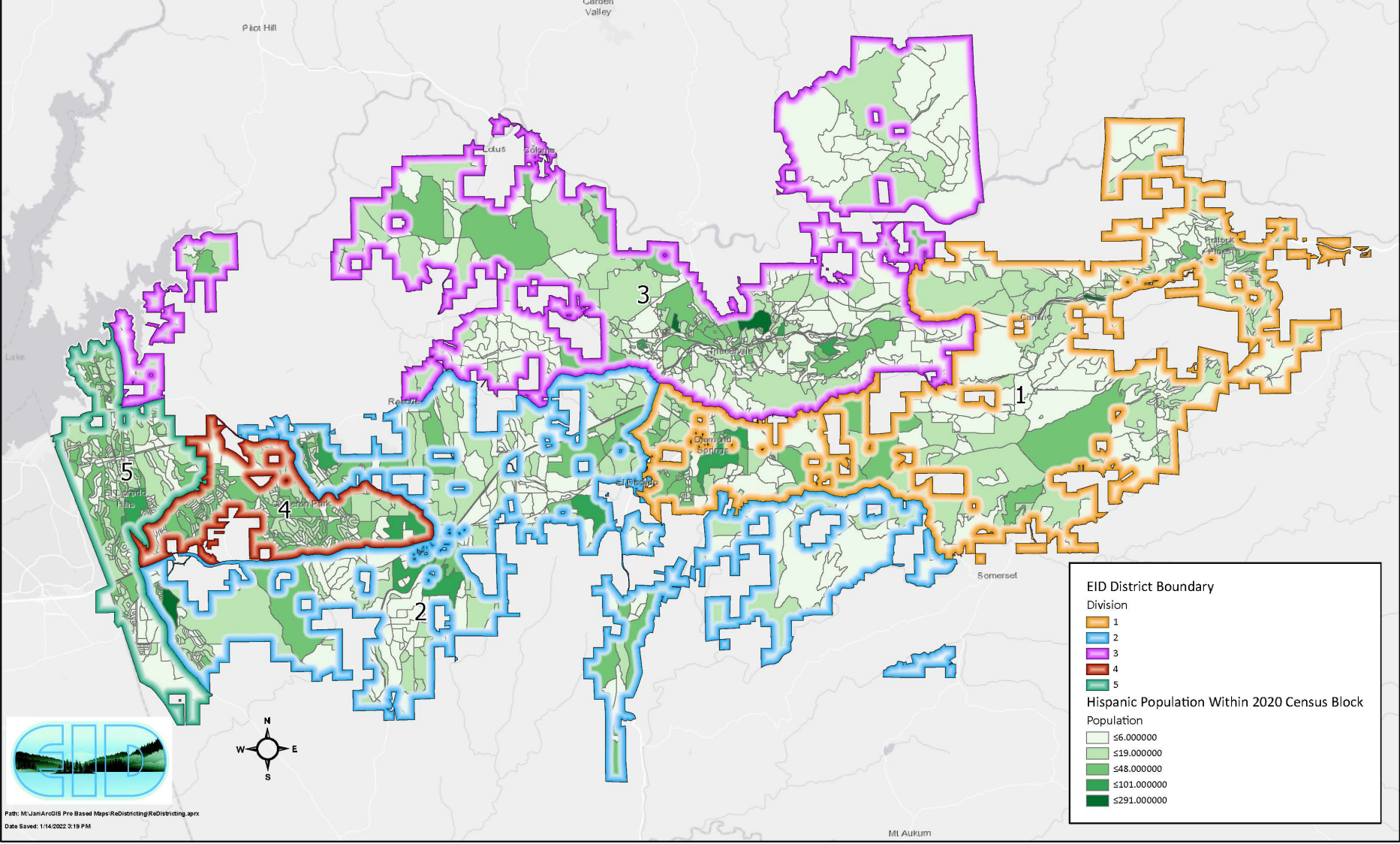
- Other secondary factors to consider:
 - Topography
 - Geography
 - Cohesiveness, contiguity, integrity, and compactness of territory
 - Community of interests

CRITERIA FOR REDISTRICTING

Secondary factors include:

- Elevation
- Watershed boundaries
- Watercourses
- Major roads and road networks
- Boundaries of Community Regions and Rural Centers defined in the County's General Plan
- Boundaries of the District's Deer Creek and El Dorado Hills wastewater collection systems
- The District's recycled water service area
- County-designated agricultural regions
- Regions of large-lot residential subdivisions
- Concentrations of multi-family housing
- The location, type, and intensity of future development under applicable County planning and zoning enactments

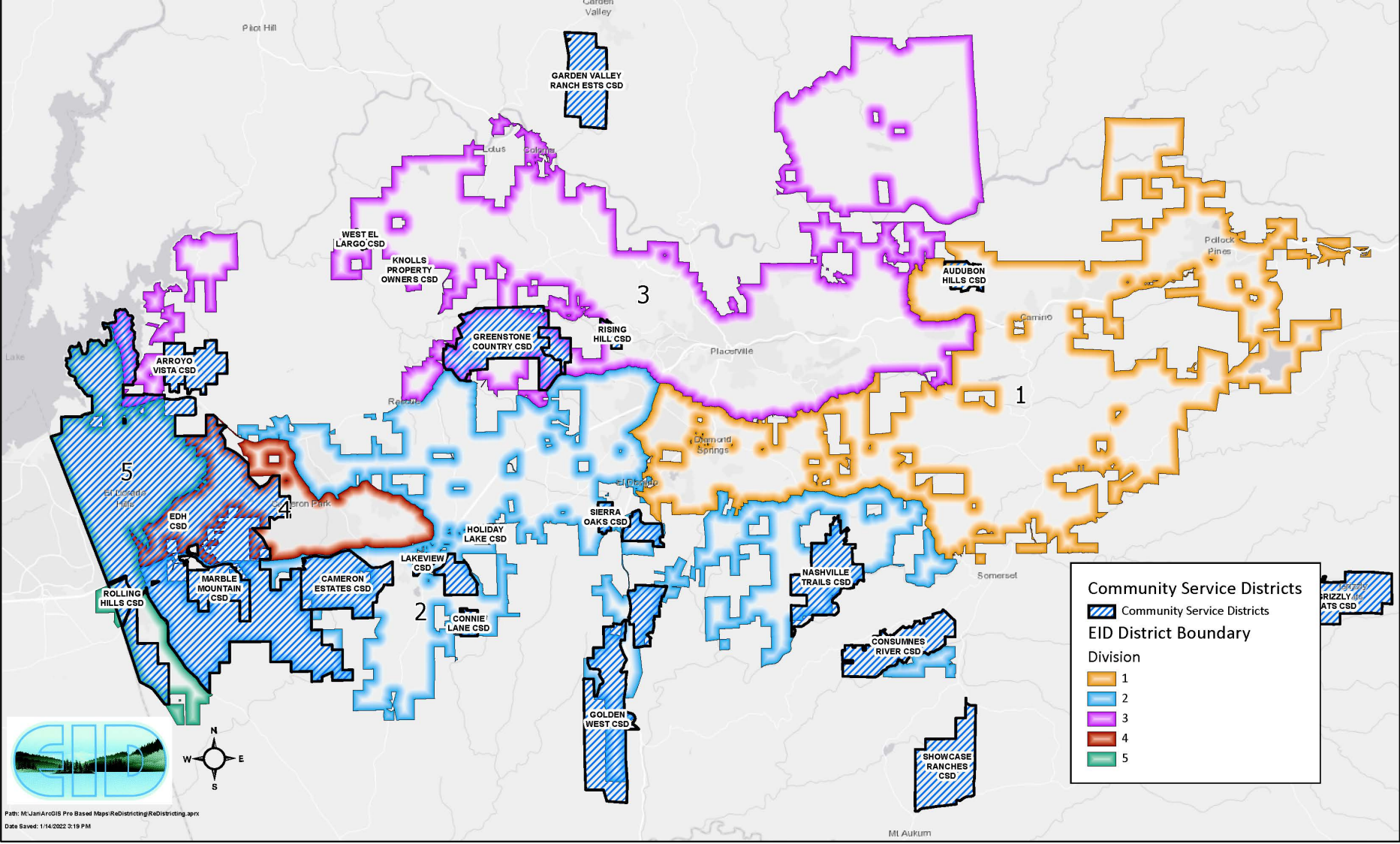
Hispanic Population and Current District Divisions



Path: M:\Jan\ArcGIS Pro Based Maps\Redistricting\Redistricting.aprx
Date Saved: 1/14/2022 2:19 PM

Mt Auklum

Community Service Districts and Current District Divisions



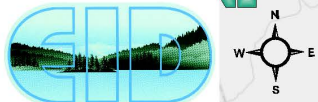
Community Service Districts

Community Service Districts

EID District Boundary

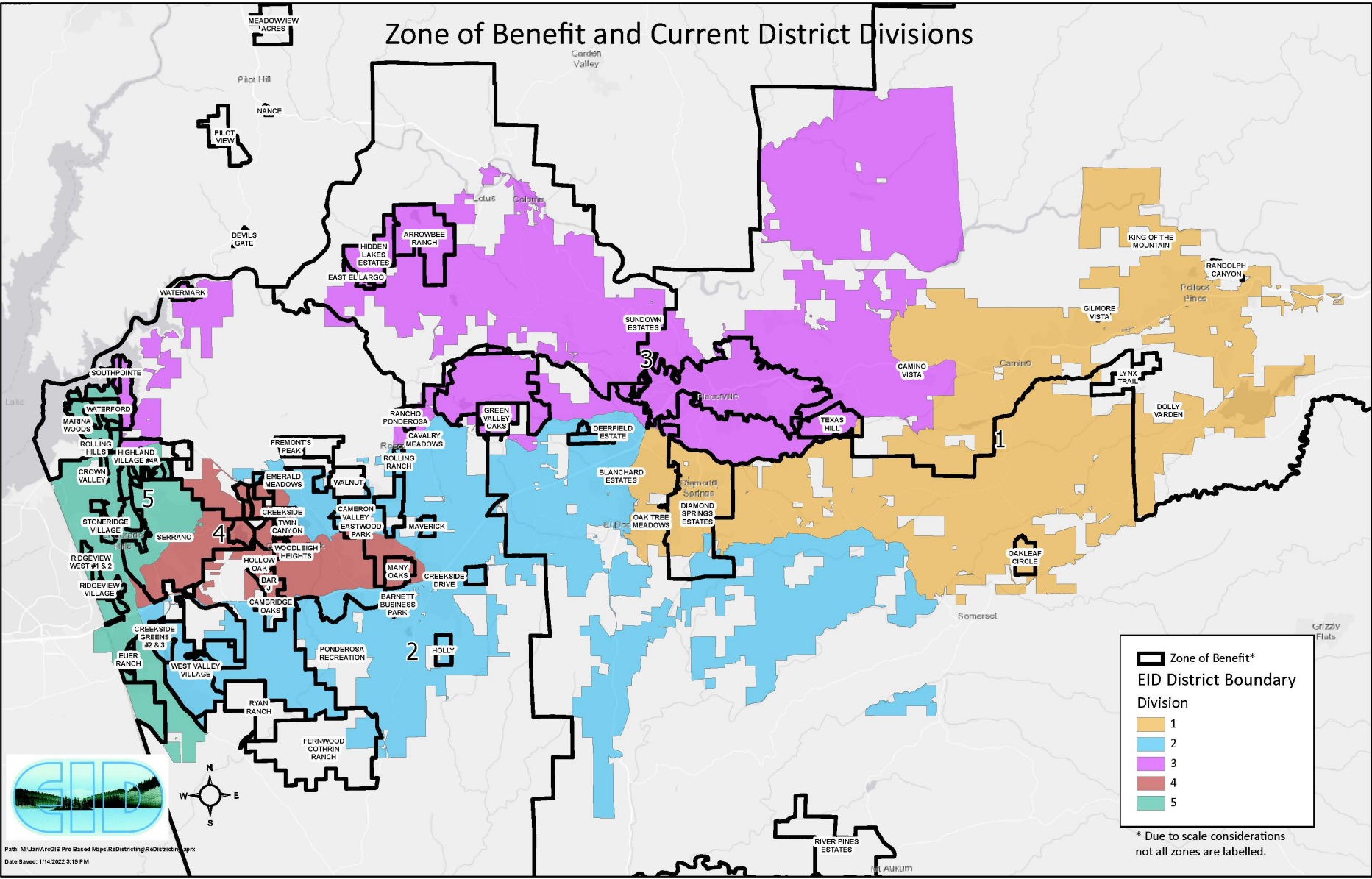
Division

- 1
- 2
- 3
- 4
- 5



Path: M:\Jan\ArcGIS Pro Based Maps\Redistricting\Redistricting.aprx
 Date Saved: 1/14/2022 2:19 PM

Zone of Benefit and Current District Divisions



Zone of Benefit*

EID District Boundary

Division

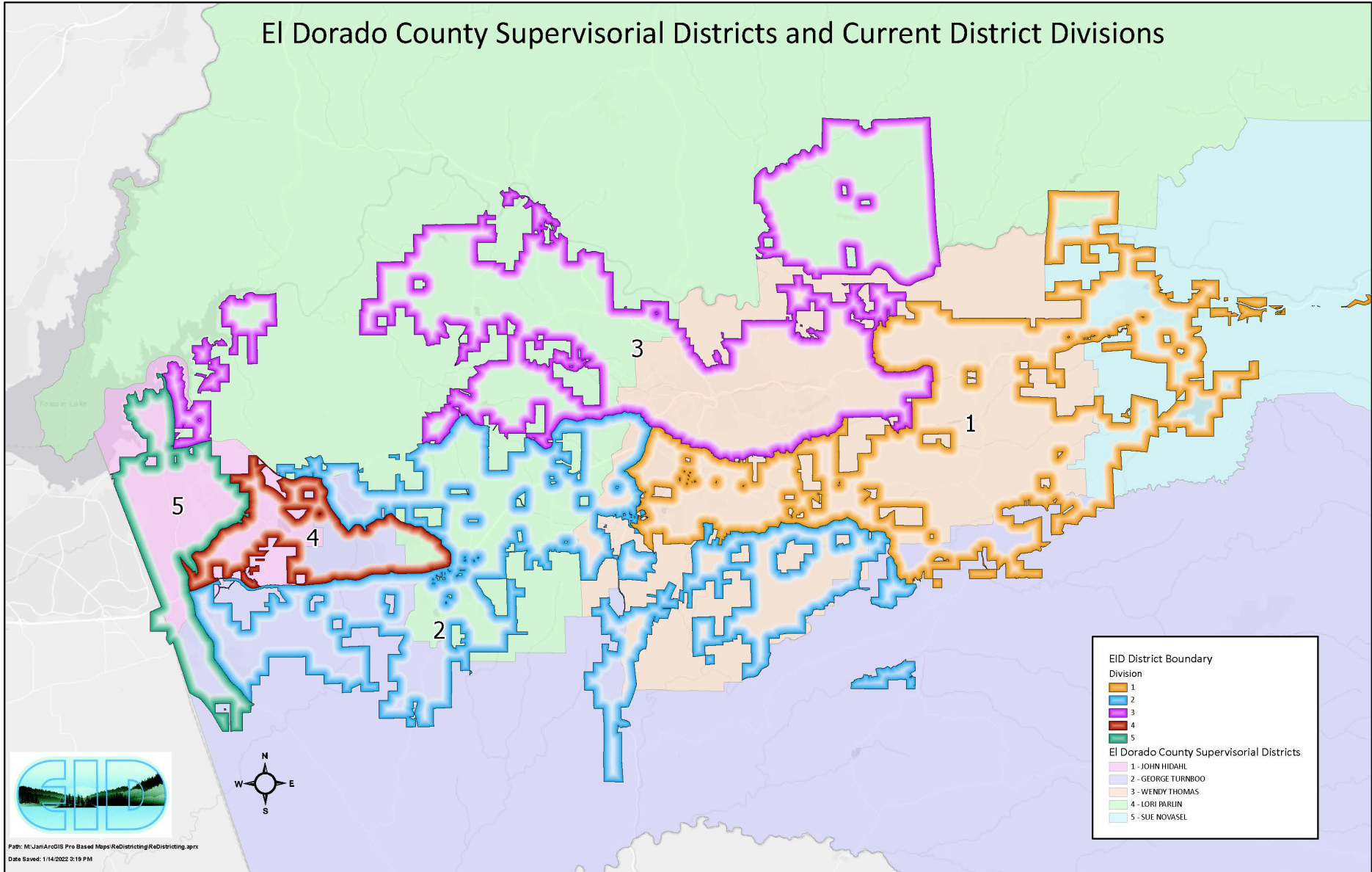
- 1
- 2
- 3
- 4
- 5

* Due to scale considerations not all zones are labelled.

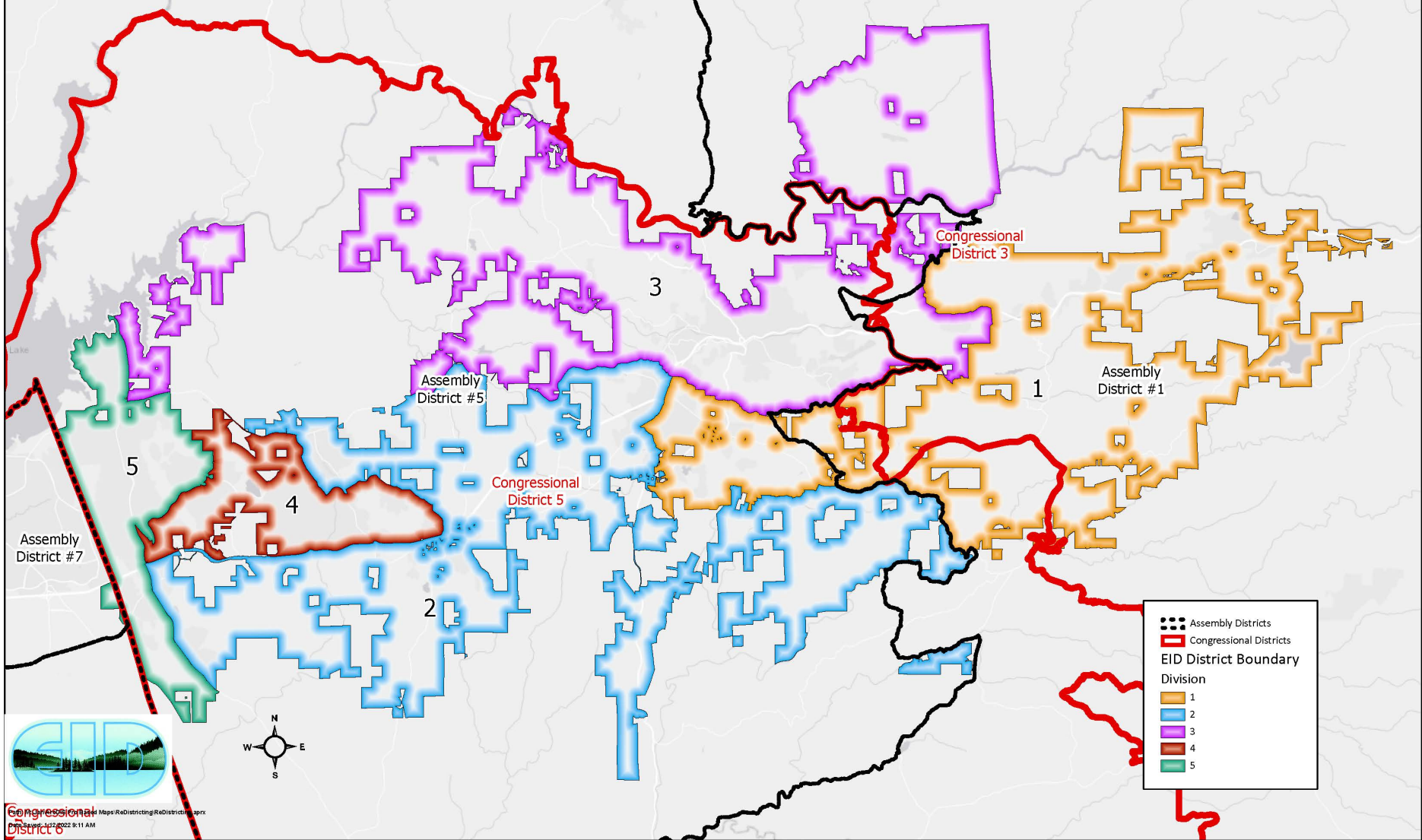


Path: M:\Jan\ArcGIS Pro Based Maps\Redistricting\Redistricting.aprx
 Date Saved: 1/14/2022 2:19 PM

El Dorado County Supervisorial Districts and Current District Divisions



Congressional and Assembly Districts - Current District Divisions



KEY ANALYTICAL FACTORS

- How to treat "communities of interest" associated with EID services received?
- How to split communities like El Dorado Hills, Cameron Park, Diamond Springs, El Dorado, and Placerville?
- How to minimize voter disruption?

SERVICES BY DIVISION

Service Type	Division 1	Division 2	Division 3	Division 4	Division 5
Water	8,687	8,831	5,802	8,959	11,227
Sewer	1,612	4,625	355	8,311	10,493
Recycled Water	0	1,614	0	2,836	1,190

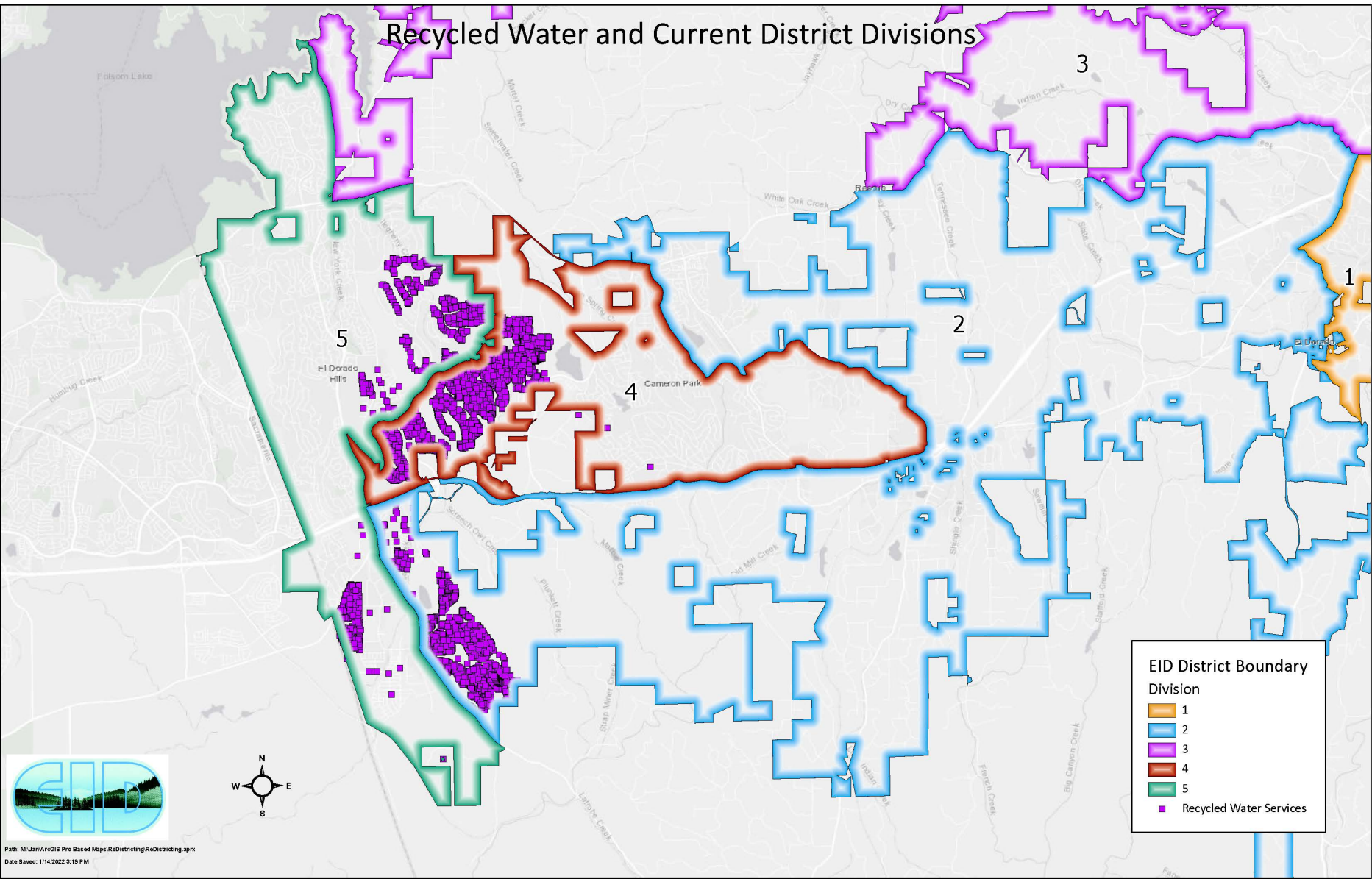
WATER METER SERVICE TYPE BY DIVISION

Service Type	Division 1	Division 2	Division 3	Division 4	Division 5
Agricultural	201	309	388	9	9
Commercial	361	516	218	127	267
Fire Protection	67	150	41	61	135
Landscape	71	184	66	79	201
Multifamily	281	280	183	80	75
Small Farm	2	18	36	0	0
Single-family	7,703	7,373	4,863	8,603	10,536

SERVICE-RELATED COMMUNITIES OF INTEREST

- Recycled Water
- Sewer / Wastewater
- Irrigation: Agriculture (Ag) and Small Farm
 - Spread among several divisions or concentrate into fewer divisions?
 - 2011 Board adopted alternative:
 - Wastewater and Recycled Water in Divisions 2, 4, and 5
 - Ag and Small Farm in Divisions 1, 2, and 3

Recycled Water and Current District Divisions



EID District Boundary

Division

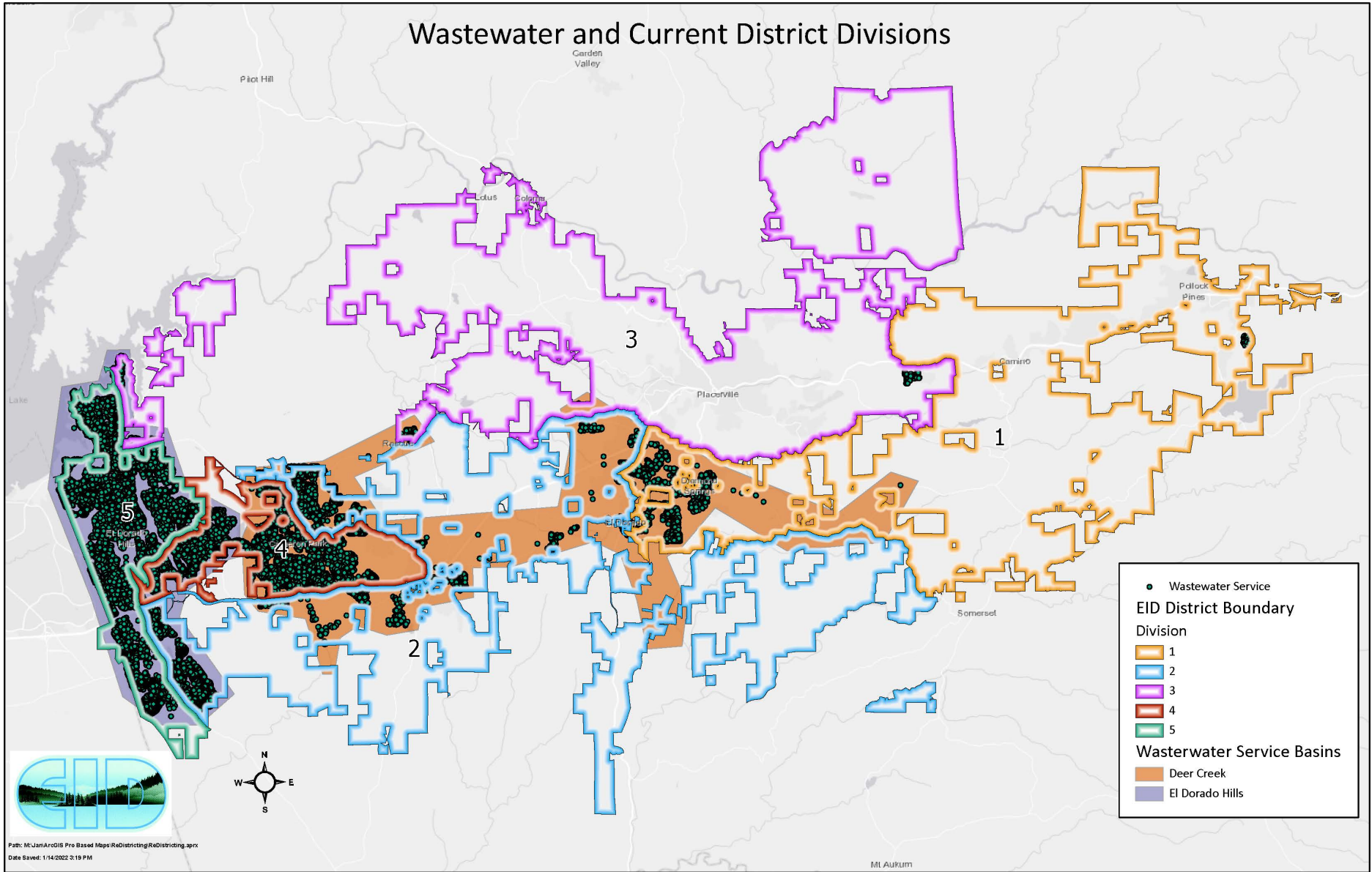
- 1
- 2
- 3
- 4
- 5

■ Recycled Water Services

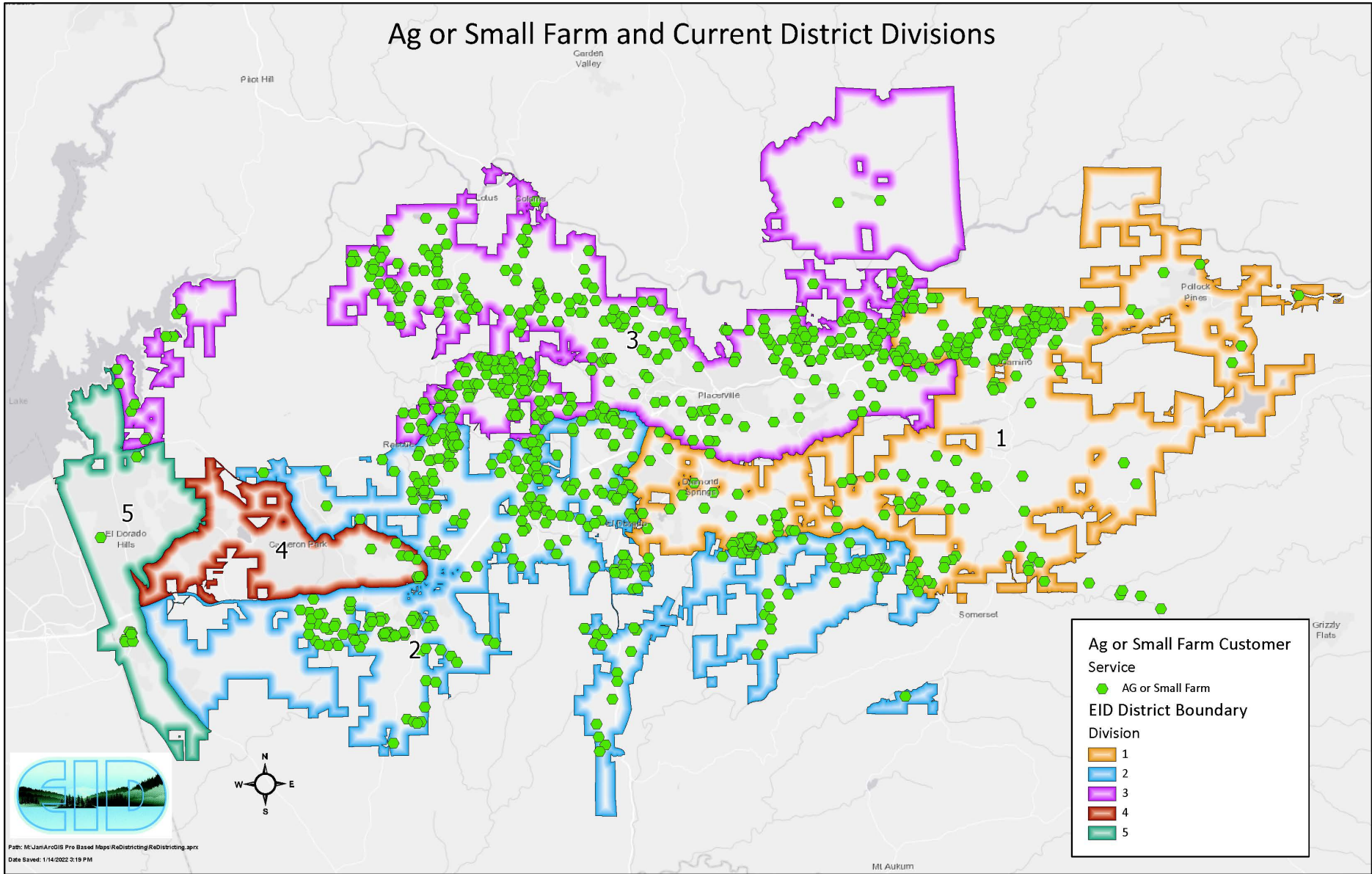


Path: M:\Jan\ArcGIS Pro Based Maps\Redistricting\Redistricting.aprx
Data Saved: 1/14/2022 2:19 PM

Wastewater and Current District Divisions



Ag or Small Farm and Current District Divisions



SPLITTING/CONSOLIDATING POPULOUS COMMUNITIES

- El Dorado Hills (EDH) and Cameron Park (CP) are the most densely populated
 - Unable to be in their own divisions
 - 2011 Board adopted alternative:
 - Divide EDH at Serrano Pkwy and Latrobe Rd
 - Divide CP at HWY 50, Cambridge Rd, and Meder Rd

VOTER DISRUPTION

- Shifts from an even-numbered to an odd-numbered division are the most disruptive:
 - Voters so affected will not vote from 2018 until 2024
 - Will be represented for more than three years by a director who never appeared on their ballot

PUBLIC OUTREACH

El Dorado Irrigation District
Serving people, agriculture, businesses, and the environment in northern California's El Dorado County since 1925

ABOUT US CUSTOMERS OUR SERVICES RECREATION DOING BUSINESS WITH EID REGULATORY I WANT TO...

EID Response to COVID-19
+ District Information
+ Document Library
Mission and Guiding Principles
+ Board of Directors
+ Departments
+ Community Outreach
+ Employment
+ ADA
Other Agency Links
+ Project Updates
Enterprise System Catalog
Government Compensation in California Website (Gov. Code Sect. 53908)
Financial Transaction Report (Gov. Code Sect. 53891a)
Redistricting 2021

About Us »
Redistricting 2021

Font size: + - + Share & Bookmark Feedback Print

EID Redistricting

Welcome to the EID redistricting page. Please bookmark this page and check back frequently for the most up-to-date information.

- Created dedicated page on District website:
- www.eid.org/about-us/redistricting-2021

NEXT STEPS

- Staff anticipates presenting draft alternative maps to the Board and public in late February

QUESTIONS?

BOARD OPTIONS

- None – Information only