

EL DORADO IRRIGATION DISTRICT

SUBJECT: Update on reapportioning District divisions.

PREVIOUS BOARD ACTION

August 22, 2011 – Board adopted Resolution No. 2011-016, establishing new division boundaries that provided for near equal division population.

May 24, December 13, 2021, and January 24, 2022 – Board considered information item on reapportioning District divisions in 2021.

BOARD POLICIES (BP), ADMINISTRATIVE REGULATIONS (AR), BOARD AUTHORITY

BP 1010 Introduction

BP 2030 Role of the General Counsel

SUMMARY OF ISSUE

The 2020 decennial census triggers a mandatory legal duty for the District to adjust its division boundaries. Reapportionment must comply with state law and with constitutional principles that ensure our ratepayers continue to receive fair and equal representation. The purpose of this item is to update the Board on staff progress and receive input from the Board in public.

BACKGROUND/DISCUSSION

Redistricting Update

Since the last public workshop on January 24, District staff have begun to develop division boundary alternatives that comply with the two mandatory criteria of population equality (targeting approximately 26,441 persons per division) and anti-discrimination. Besides the two mandatory criteria of population equality and anti-discrimination, Elections Code section 22000(a) states that the reapportionment "may" give consideration to the following secondary factors: (1) topography, (2) geography, (3) cohesiveness, contiguity, integrity, and compactness of territory, and (4) community of interests of the division. Under state law, consideration of these factors is optional; however, Board Policy 1010 makes them mandatory.

Staff have analyzed the 2020 census data along with informational maps that reflect data useful in assessing the secondary factors described above and have developed four draft maps that reflect potential divisional boundaries informed by these factors. During the presentation of this item, staff will present interactive views of the alternative maps included in this agenda item as Attachments A, B, C, and D. In addition to the draft maps, staff have included summaries of how each map portrays three key criteria: (1) how to treat communities of interest associated with EID services; (2) how to split populous communities like El Dorado Hills, Cameron Park, Diamond Springs, El Dorado, and Placerville; and (3) how to minimize voter disruption.

Next Steps

District staff seek feedback from the Board and public on the draft alternative division maps and plan to bring revised maps back to the Board on February 28th. District staff will continue to update the District's dedicated redistricting webpage with content as it becomes available.

BOARD OPTIONS

None – Information only.

RECOMMENDATION

None – Information only.

ATTACHMENTS

Attachment A: Draft Alternative 1A and General Counsel Summary

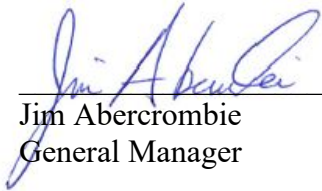
Attachment B: Draft Alternative 2 and General Counsel Summary

Attachment C: Draft Alternative 3 and General Counsel Summary

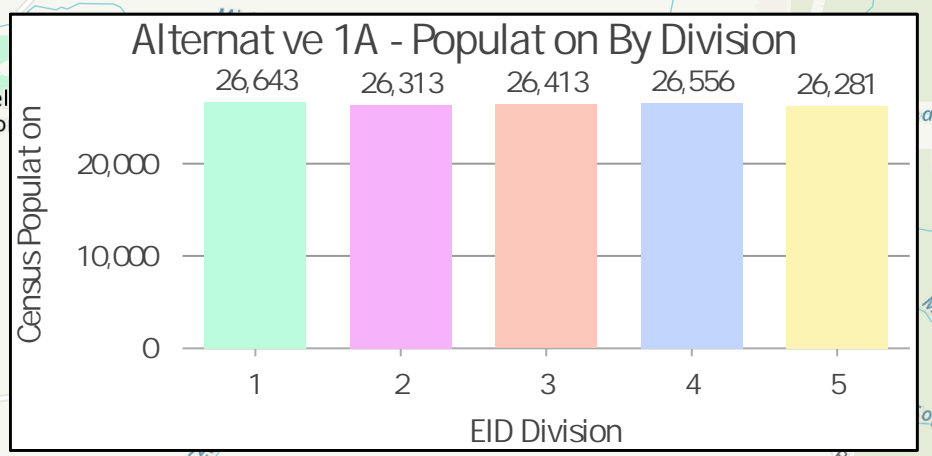
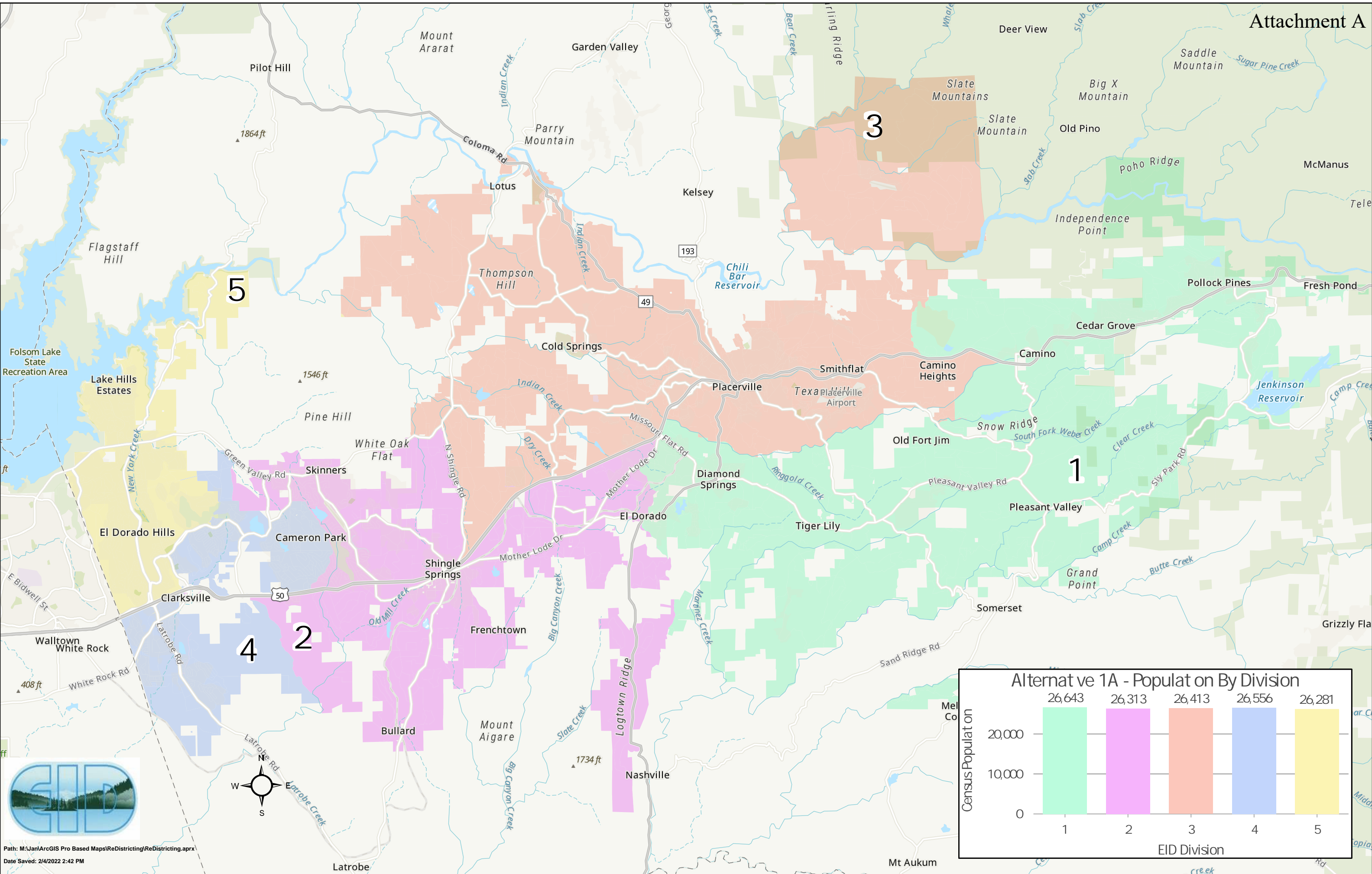
Attachment D: Draft Alternative 4 and General Counsel Summary



Brian Poulsen
General Counsel



Jim Abercrombie
General Manager

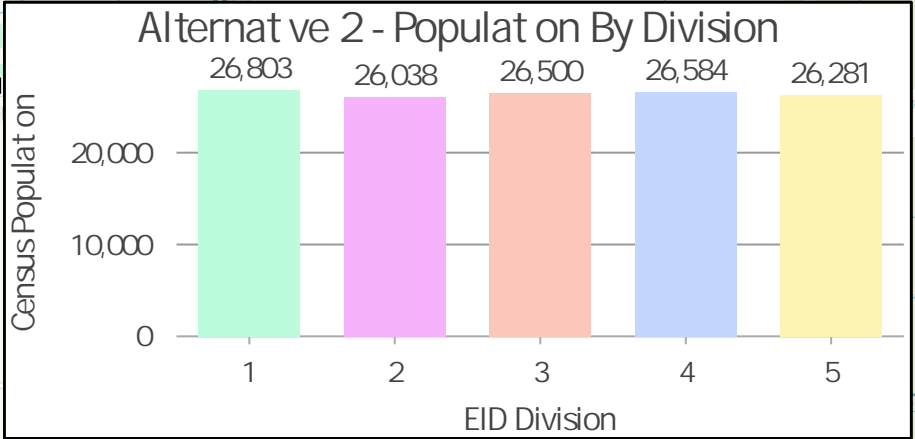
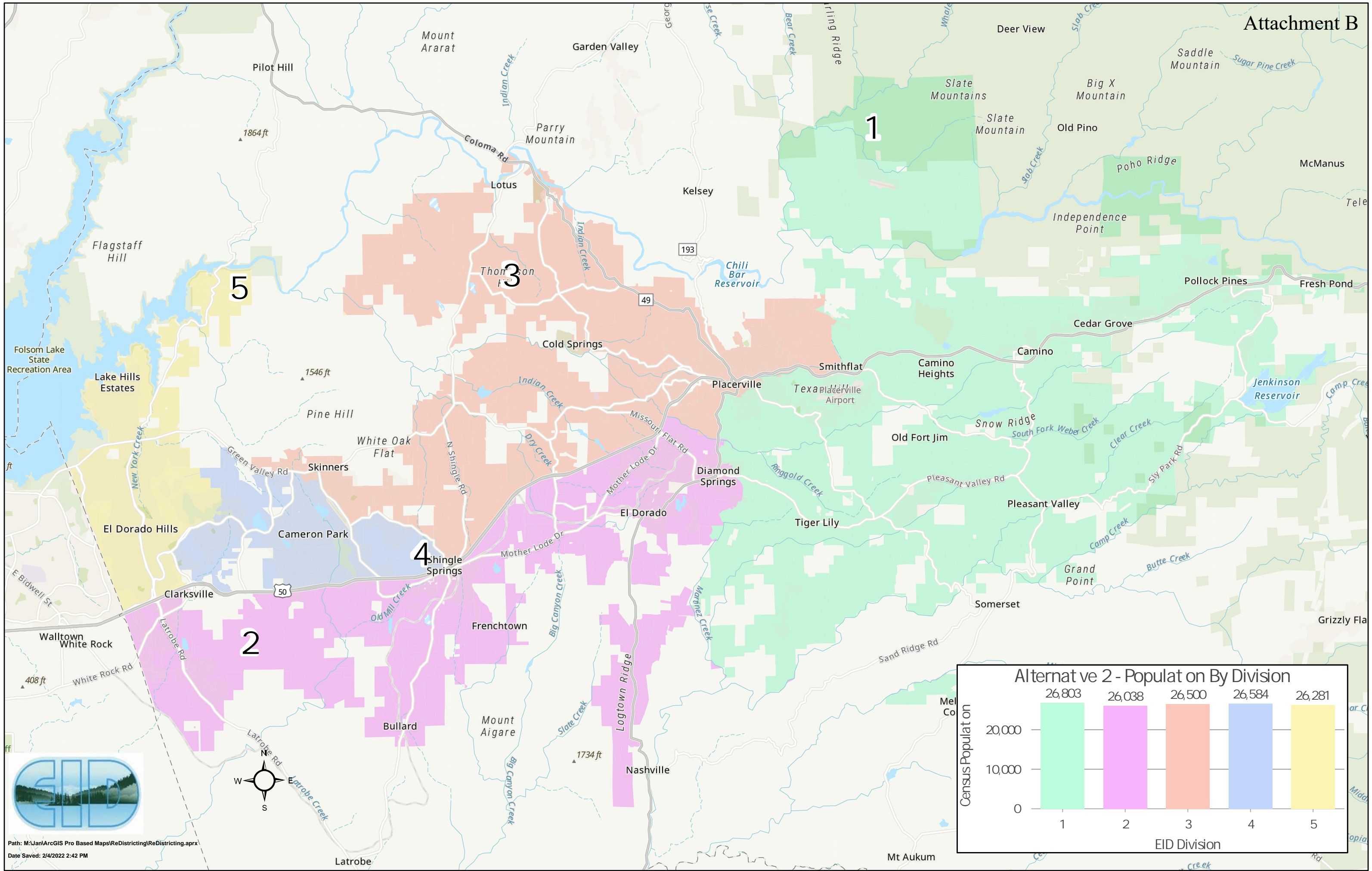


Redistricting

Draft Alternative Map 1A

General Counsel Summary

- Salmon Falls
 - Moves Salmon Falls from Division 3 to Division 5
- Populous Communities
 - Splits El Dorado Hills at HWY 50 into Divisions 4 and 5
 - Consolidates most of Diamond Springs and El Dorado into Division 1
- Recycled Water
 - Consolidates almost all recycled water customers into Division 4
- Wastewater
 - Spreads wastewater customers among all divisions
 - Moves many wastewater customers from Diamond Springs to Division 1
- Voter Disruption
 - Some customers in Diamond Springs move from Division 2 to Division 1
 - Some customers in Shingle Springs move from Division 2 to Division 3
- Other
 - Preserves integrity of Placerville
 - Moves Outingdale from Division 2 to Division 1

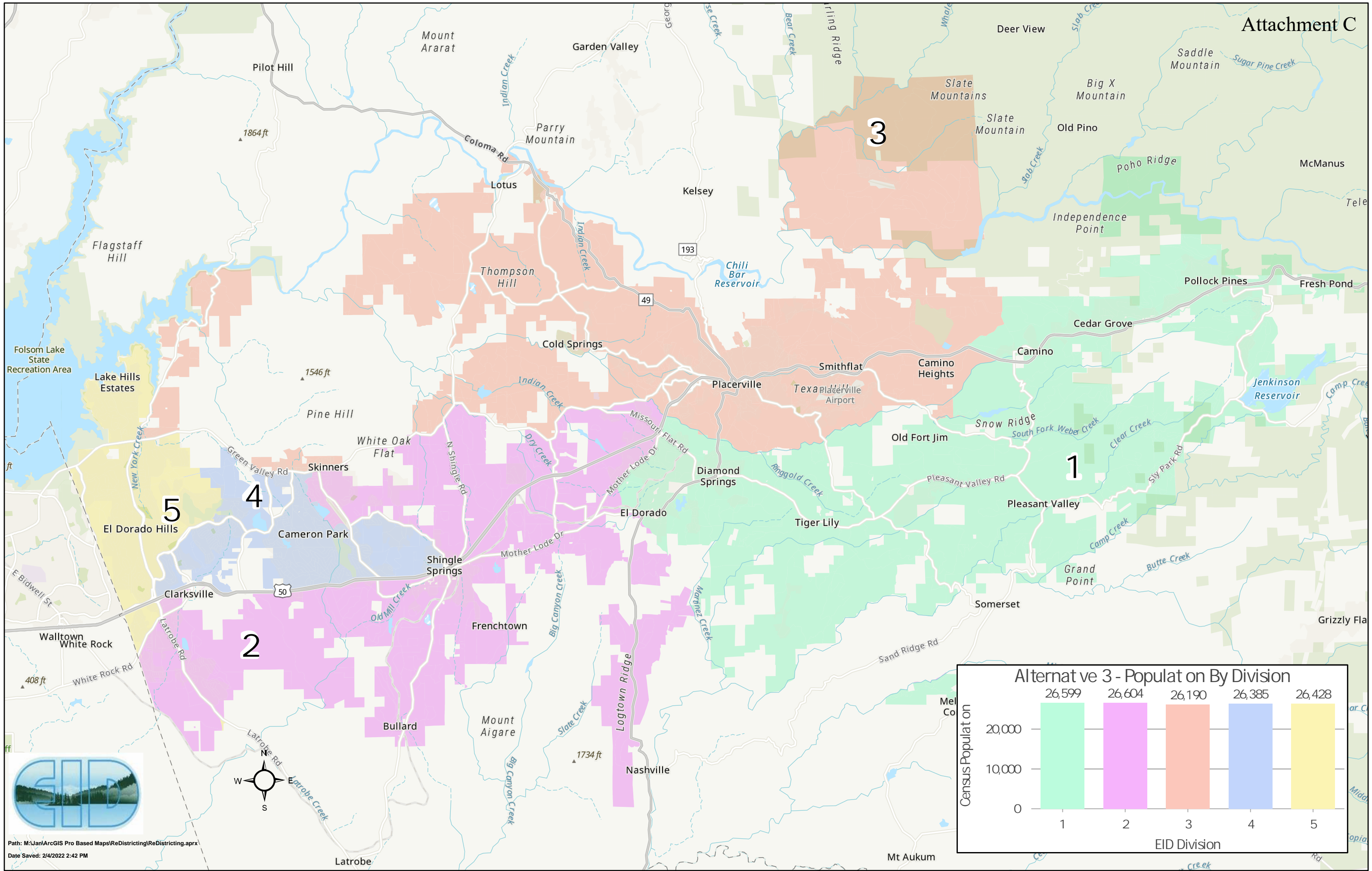


Redistricting

Draft Alternative Map 2

General Counsel Summary

- Salmon Falls
 - Moves Salmon Falls from Division 3 to Division 5
- Populous Communities
 - Preserves existing split of El Dorado Hills and Cameron Park into Divisions 2, 4, and 5
 - Uses HWY 50 to divide Divisions 2 and 5, 2 and 4, and 2 and 3
 - Consolidates most of Diamond Springs and El Dorado into Division 2
- Recycled Water
 - Spreads recycled water customers among Divisions 2, 4, and 5
- Wastewater
 - Spreads wastewater customers among all divisions
 - A significant number of wastewater customers are moved into Division 3
 - A small number of wastewater customers are moved into Division 1
- Voter Disruption
 - Some customers in Shingle Springs and Cameron Park moved from Division 2 to Division 3
 - Outingdale and south county customers move from Division 2 to Division 1
- Other
 - Splits Placerville into Divisions 1 and 3
 - Moves Swansboro into Division 1
 - Moves Camino Heights into Division 1
 - Moves Outingdale from Division 2 to Division 1

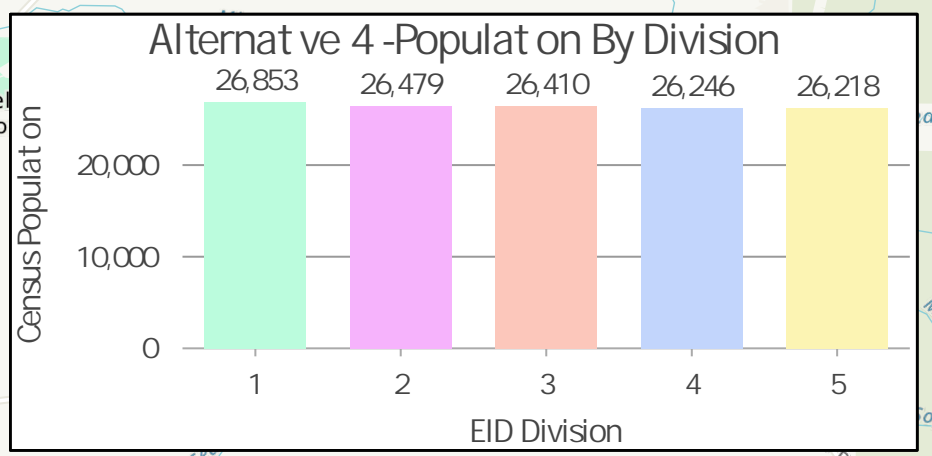
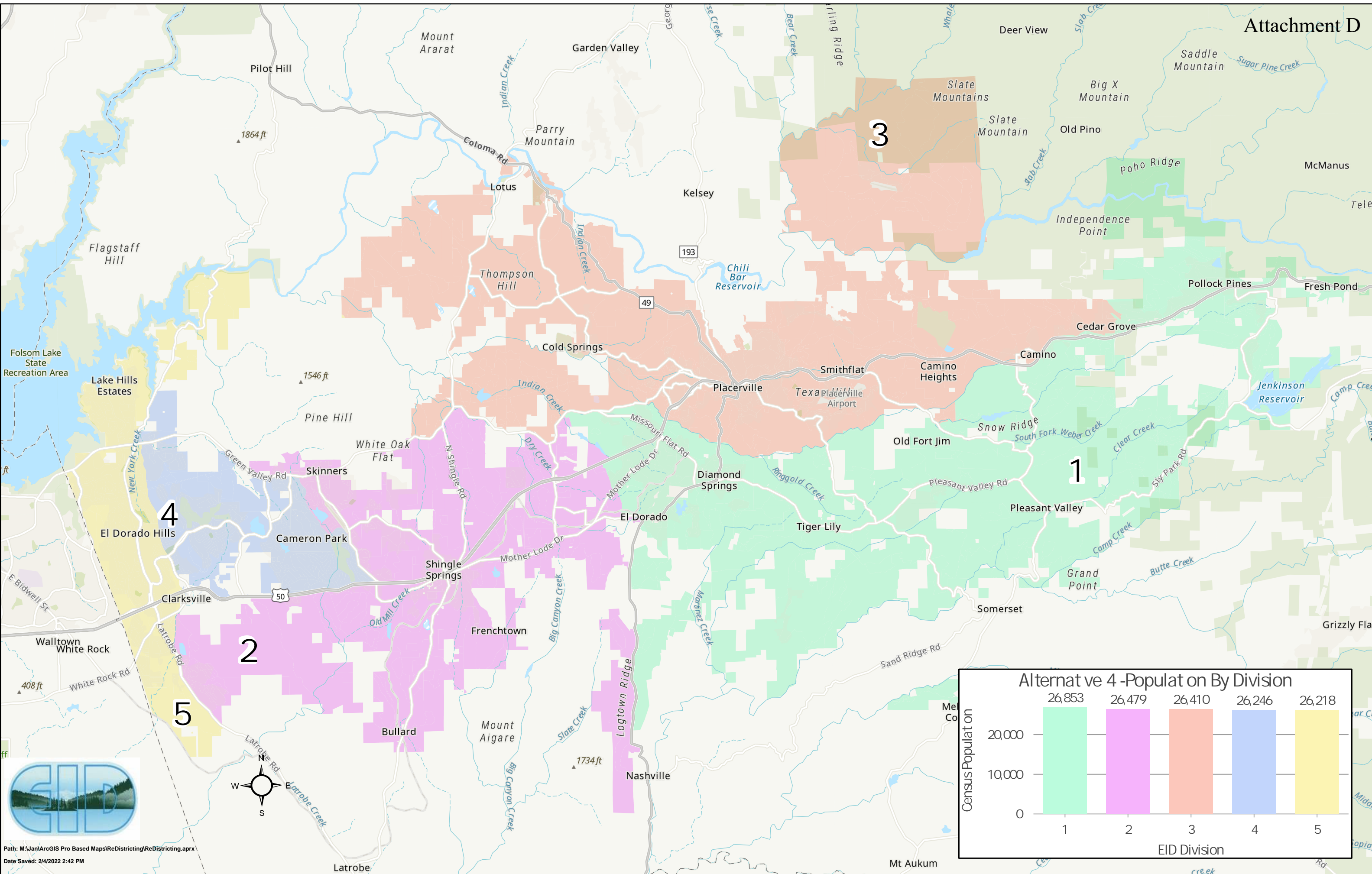


Redistricting

Draft Alternative Map 3

General Counsel Summary

- Salmon Falls
 - Mostly remains in Division 3
- Populous Communities
 - Moves a small number of northern El Dorado Hills customers from Division 3 to Division 5
 - Moves a small number of Cameron Park customers near the airport from Division 2 to Division 4
- Recycled Water
 - Spreads recycled water customers among Divisions 2, 4, and 5
- Wastewater
 - Spreads wastewater customers among all divisions
- Voter Disruption
 - Outingdale and south county customers move from Division 2 to Division 1
 - Moves a small amount of Cameron Park and Rescue customers north of Green Valley Road from Division 2 to Division 3
- Other
 - Preserves integrity of Placerville



Redistricting

Draft Alternative Map 4

General Counsel Summary

- Salmon Falls
 - Moves a majority of Salmon Falls from Division 3 to Division 5
- Populous Communities
 - Splits El Dorado Hills at Silva Valley Parkway and Latrobe Road into Divisions 4 and 5
 - Splits Cameron Park at Cameron Park Drive into Divisions 2 and 4
 - Splits Diamond Springs and El Dorado at HWY 49 into Divisions 1 and 2
- Recycled Water
 - Spreads recycled water customers among Divisions 2, 4, and 5
- Wastewater
 - Spreads wastewater customers among all divisions
- Voter Disruption
 - Outingdale and some south county customers move from Division 2 to Division 1
 - Moves a small amount of El Dorado Hills customers near Town Center from Divisions 2 and 4 to Division 5
 - Moves a small amount of Placerville customers south of Green Valley Road near Missouri Flat Road from Division 2 to Division 1
- Other
 - Preserves integrity of Placerville



REDISTRICTING

FEBRUARY 14, 2022

PREVIOUS BOARD ACTION

- August 22, 2011 – Board adopted Resolution No. 2011-016, establishing new division boundaries that provided for near equal division population
- May 24, December 13, 2021, and January 24, 2022 – Board considered information item on reapportioning District divisions in 2021

SUMMARY OF ISSUE

- The 2020 decennial census triggers a mandatory legal duty for the District to adjust its division boundaries
- Must comply with state law and constitutional principles to ensure ratepayers receive fair and equal representation

CRITERIA FOR REDISTRICTING

- District staff intend to develop division boundary alternatives in compliance with the two mandatory criteria
 - Population equality: population is equally distributed among the divisions (target approximately 26,441 persons)
 - Anti-discrimination: avoid the imposition of racial, ethnic, or linguistic impediments to citizens' voting rights

CRITERIA FOR REDISTRICTING

- Other secondary factors to consider:
 - Topography
 - Geography
 - Cohesiveness, contiguity, integrity, and compactness of territory
 - Community of interests

CRITERIA FOR REDISTRICTING

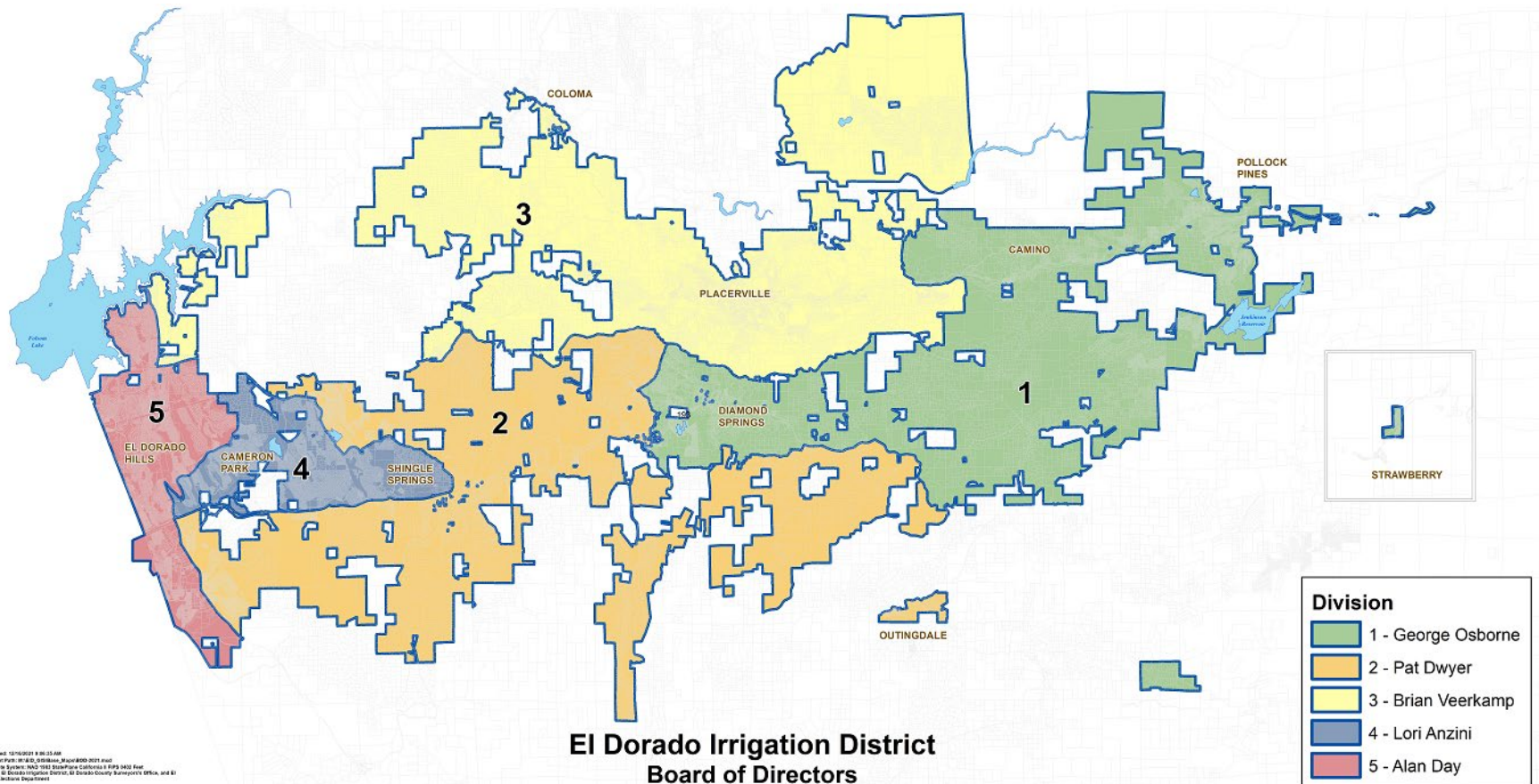
Secondary factors include:

- Elevation
- Watershed boundaries
- Watercourses
- Major roads and road networks
- Boundaries of Community Regions and Rural Centers defined in the County's General Plan
- Boundaries of the District's Deer Creek and El Dorado Hills wastewater collection systems
- The District's recycled water service area
- County-designated agricultural regions
- Regions of large-lot residential subdivisions
- Concentrations of multi-family housing
- The location, type, and intensity of future development under applicable County planning and zoning enactments

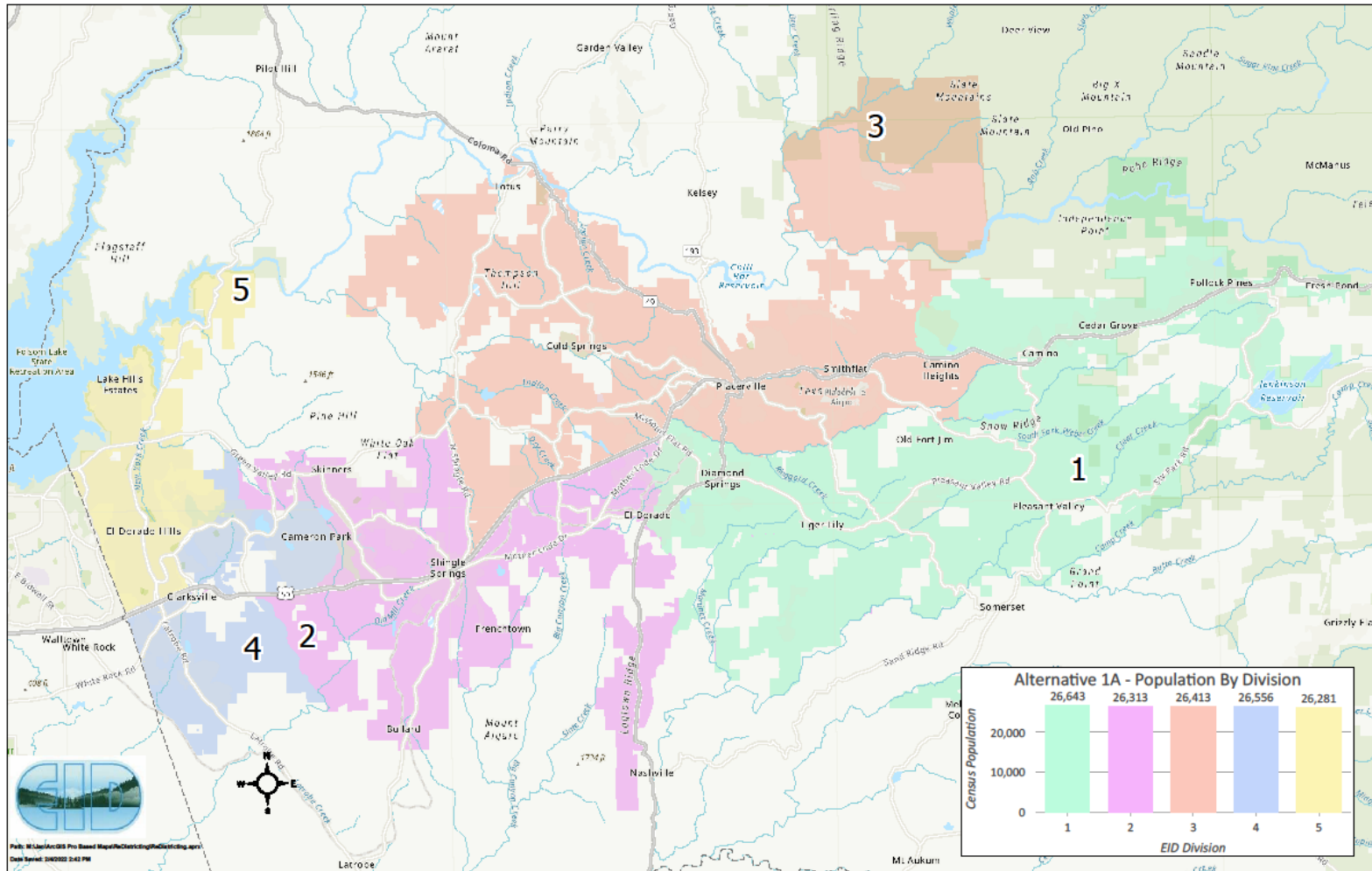
KEY ANALYTICAL FACTORS

- How to treat "communities of interest" associated with EID services received?
- How to split communities like El Dorado Hills, Cameron Park, Diamond Springs, El Dorado, and Placerville?
- How to minimize voter disruption?

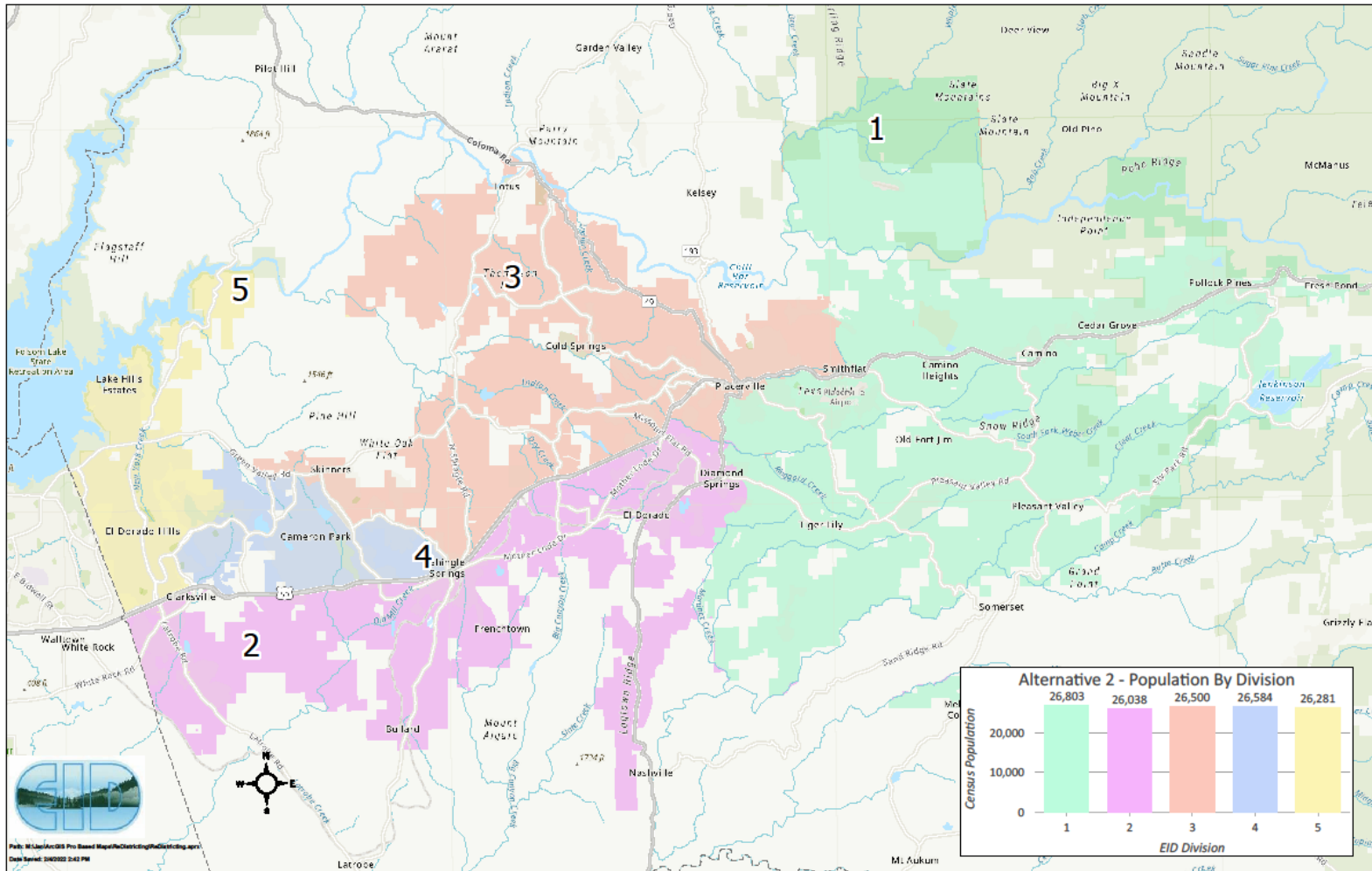
CURRENT DIVISION BOUNDARIES



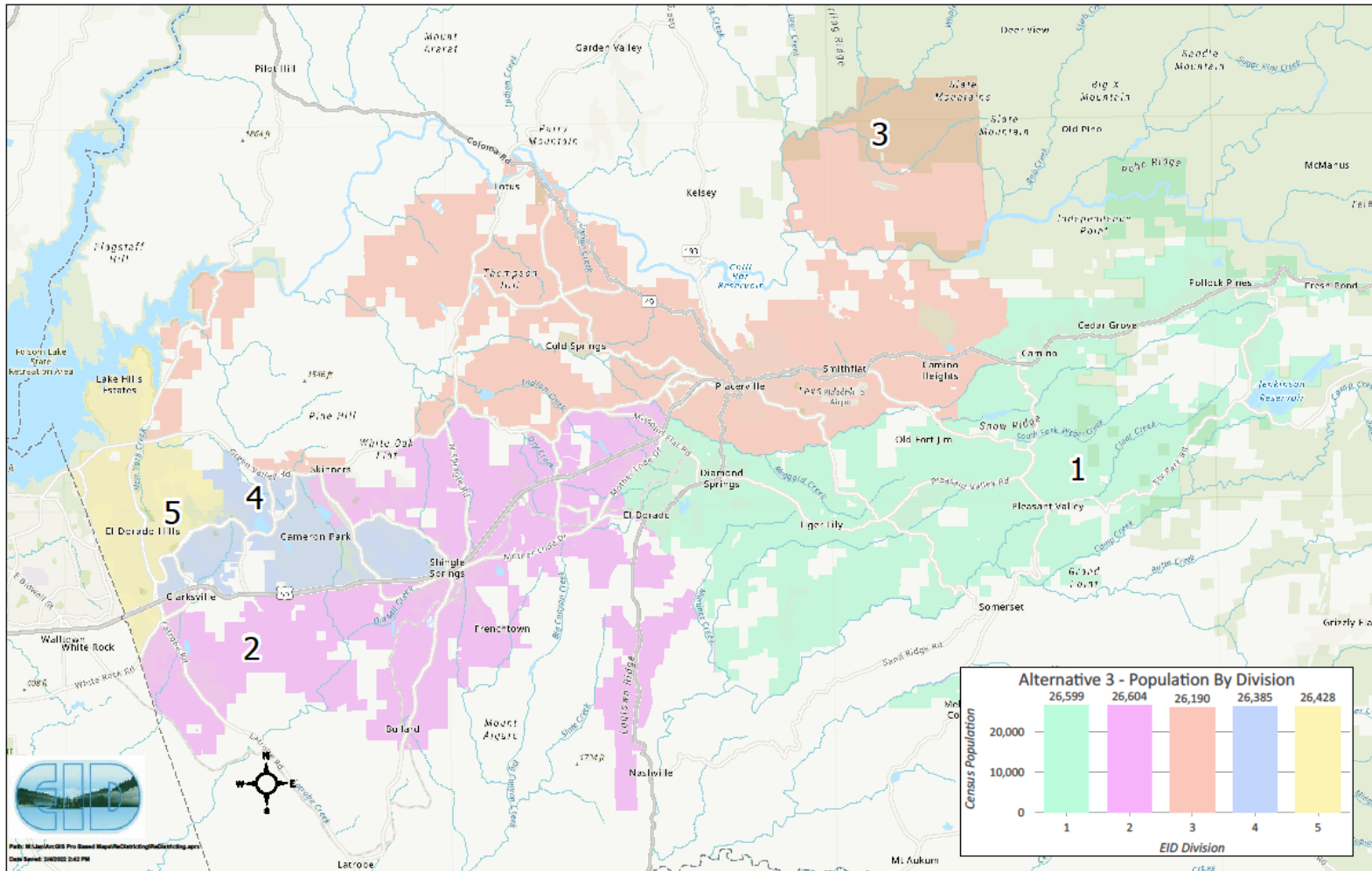
ALTERNATIVE 1A



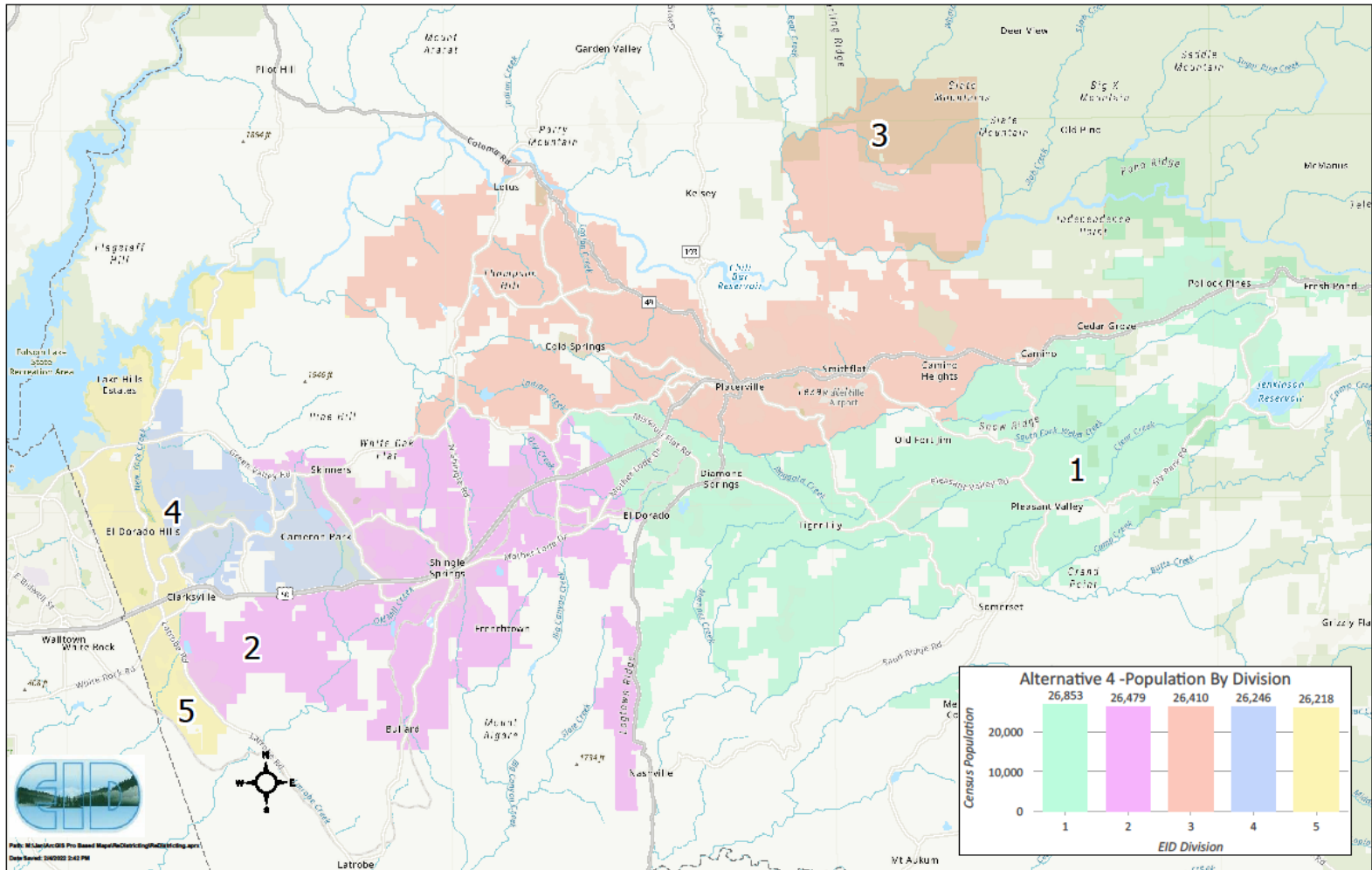
ALTERNATIVE 2



ALTERNATIVE 3



ALTERNATIVE 4



PUBLIC OUTREACH

The screenshot displays the El Dorado Irrigation District website. At the top left is the district logo and name, "El Dorado Irrigation District", with the tagline "Serving people, agriculture, businesses, and the environment in northern California's El Dorado County since 1925". A search bar is located to the right of the logo. Below the logo is a navigation menu with items: ABOUT US, CUSTOMERS, OUR SERVICES, RECREATION, DOING BUSINESS WITH EID, REGULATORY, and I WANT TO... On the left side, there is a vertical sidebar menu with various links including "EID Response to COVID-19", "District Information", "Document Library", "Mission and Guiding Principles", "Board of Directors", "Departments", "Community Outreach", "Employment", "ADA", "Other Agency Links", "Project Updates", "Enterprise System Catalog", "Government Compensation in California Website (Gov. Code Sect. 53908)", "Financial Transaction Report (Gov. Code Sect. 53891a)", and "Redistricting 2021". The main content area features the heading "Redistricting 2021" and a large map titled "EID Redistricting". The map shows the district's boundaries divided into five numbered regions (1-5) with small portraits of representatives. Below the map, a welcome message reads: "Welcome to the EID redistricting page. Please bookmark this page and check back frequently for the most up-to-date information."

- Dedicated page on District website:
- <https://www.eid.org/redistricting>
- Interactive alternative maps available

NEXT STEPS

- Staff will hold a Public Hearing February 28 to present draft alternative maps to the Board and public

QUESTIONS?

BOARD OPTIONS

- None – Information only