

## EL DORADO IRRIGATION DISTRICT

**SUBJECT:** Update on reapportioning District divisions.

### PREVIOUS BOARD ACTION

August 22, 2011 – Board adopted Resolution No. 2011-016, establishing new division boundaries that provided for near equal division population.

May 24, December 13, 2021, January 24, and February 14, 2022 – Board considered information item on reapportioning District divisions in 2021.

### BOARD POLICIES (BP), ADMINISTRATIVE REGULATIONS (AR), BOARD AUTHORITY

BP 1010 Introduction

BP 2030 Role of the General Counsel

### SUMMARY OF ISSUE

The 2020 decennial census triggers a mandatory legal duty for the District to adjust its division boundaries. Reapportionment must comply with state law and with constitutional principles that ensure our ratepayers continue to receive fair and equal representation. The purpose of this item is to update the Board on staff progress and receive input from the Board in public.

### BACKGROUND/DISCUSSION

On February 14, 2022, District staff presented four draft division boundary alternatives maps for Board and public feedback. Each of the four draft maps comply with the State and Federal requirements for reapportioning population equally among the five District divisions and consider a multitude of factors including topography, geography, cohesiveness, contiguity, integrity, and compactness of territory, and community of interests of the division.

During the presentation on February 14<sup>th</sup>, staff focused on how each draft map alternative split populous communities like El Dorado Hills, Cameron Park, Diamond Springs, El Dorado, and Placerville. The following tables present additional information in an attempt to quantify the impacts associated with each draft map alternative on (1) the distribution of EID services, and (2) how to minimize voter disruption.

Alternative 1A	Division 1	Division 2	Division 3	Division 4	Division 5	Total Voter Disruption
<b>Population of Voter Disruption Even to Odd Division Movement</b>	1,610	—	2,577	—	794	4,981
<b>Water Service Connections</b>	9,178	8,246	6,299	10,177	9,608	—
<b>Agriculture Service Connections</b>	256	197	444	7	12	—
<b>Sewer Service Connections</b>	1,657	4,788	320	9,760	8,871	—
<b>Recycled Water Service Connections</b>	0	0	0	4,647	993	—

<b>Alternative 2</b>	<b>Division 1</b>	<b>Division 2</b>	<b>Division 3</b>	<b>Division 4</b>	<b>Division 5</b>	<b>Total Voter Disruption</b>
<b>Population of Voter Disruption Even to Odd Division Movement</b>	1,514	—	9,085	—	794	11,393
<b>Water Service Connections</b>	8,298	9,636	6,668	9,299	9,608	—
<b>Agriculture Service Connections</b>	325	178	392	9	12	—
<b>Sewer Service Connections</b>	217	6,186	1,484	8,638	8,871	—
<b>Recycled Water Service Connections</b>	0	2,109	0	2,538	993	—

<b>Alternative 3</b>	<b>Division 1</b>	<b>Division 2</b>	<b>Division 3</b>	<b>Division 4</b>	<b>Division 5</b>	<b>Total Voter Disruption</b>
<b>Population of Voter Disruption Even to Odd Division Movement</b>	2,278	—	1,092	—	0	3,370
<b>Water Service Connections</b>	9,094	9,461	6,341	9,096	9,517	—
<b>Agriculture Service Connections</b>	230	242	422	9	13	—
<b>Sewer Service Connections</b>	1,732	5,683	652	8,407	8,922	—
<b>Recycled Water Service Connections</b>	0	2,104	0	2,838	698	—

<b>Alternative 4</b>	<b>Division 1</b>	<b>Division 2</b>	<b>Division 3</b>	<b>Division 4</b>	<b>Division 5</b>	<b>Total Voter Disruption</b>
<b>Population of Voter Disruption Even to Odd Division Movement</b>	4,394	—	0	—	1,653	6,047
<b>Water Service Connections</b>	9,127	7,985	6,541	9,371	10,485	—
<b>Agriculture Service Connections</b>	205	211	481	3	16	—
<b>Sewer Service Connections</b>	1,859	4,664	213	9,074	9,586	—
<b>Recycled Water Service Connections</b>	0	1,479	0	3,146	1,015	—

***Next Steps***

District staff will seek feedback from the Board and public on the draft alternative division maps and plan to bring final maps to the Board on March 28 for adoption. District staff will continue to update the District’s dedicated redistricting webpage with content as it becomes available.

**BOARD OPTIONS**

None – Information only.

**RECOMMENDATION**

None – Information only.

**ATTACHMENTS**

Attachment A: Draft Alternative 1A and General Counsel Summary

Attachment B: Draft Alternative 2 and General Counsel Summary

Attachment C: Draft Alternative 3 and General Counsel Summary

Attachment D: Draft Alternative 4 and General Counsel Summary



---

Brian Poulsen  
General Counsel

---

Jim Abercrombie  
General Manager



# REDISTRICTING

FEBRUARY 28, 2022

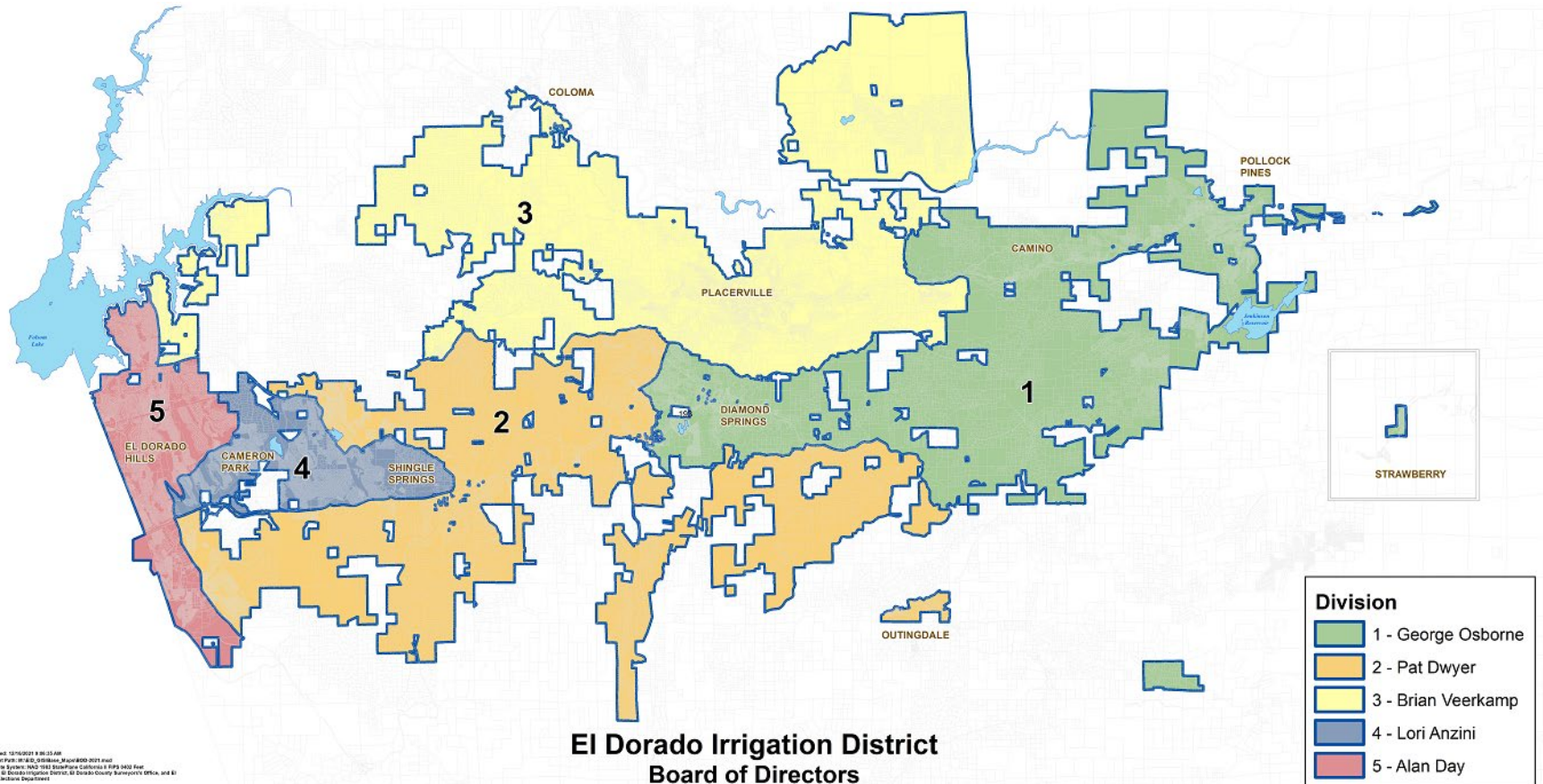
## PREVIOUS BOARD ACTION

- August 22, 2011 – Board adopted Resolution No. 2011-016, establishing new division boundaries that provided for near equal division population
- May 24, December 13, 2021, January 24, and February 14, 2022 – Board considered information item on reapportioning District divisions in 2021

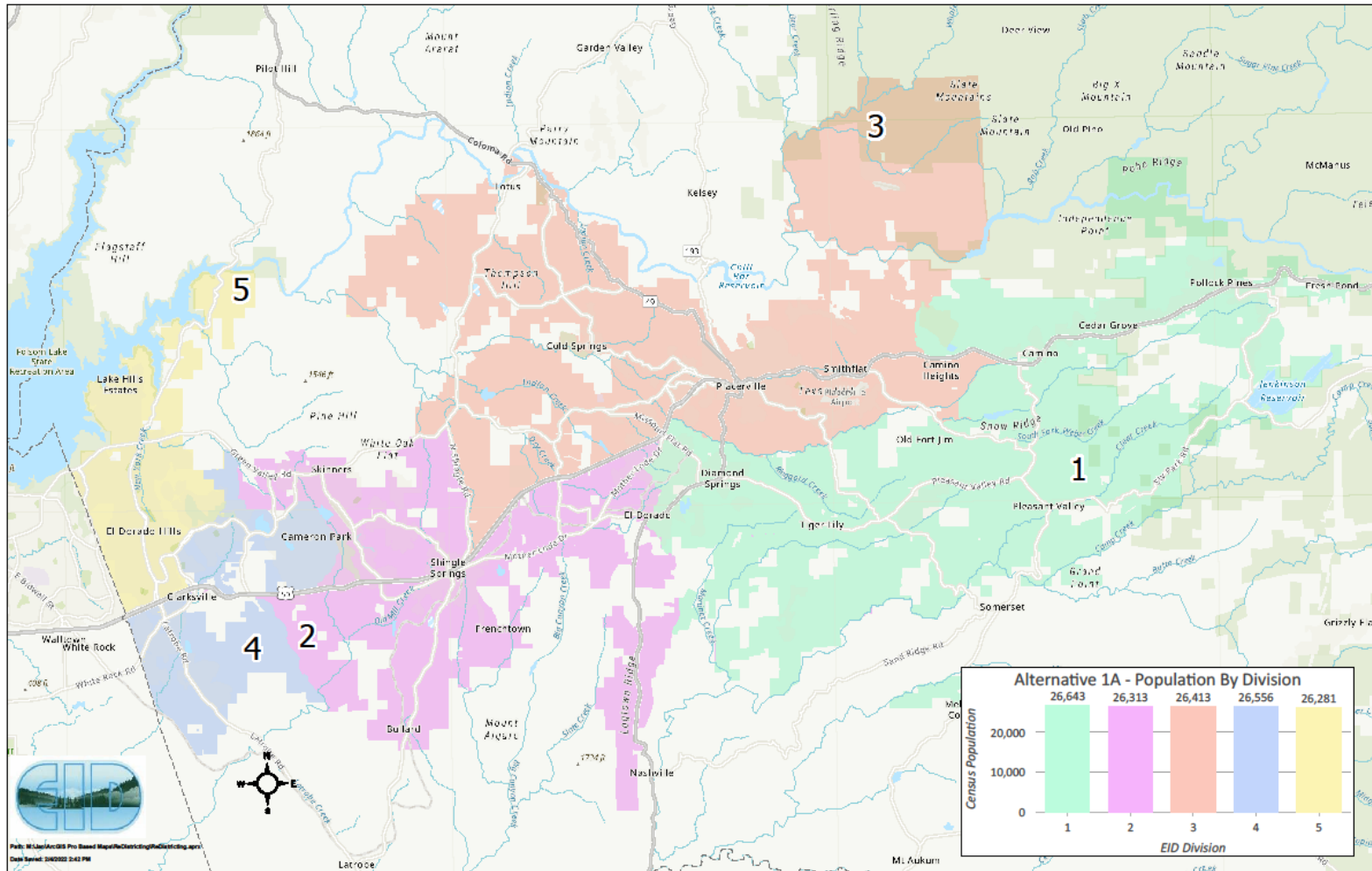
# SUMMARY OF ISSUE

- The 2020 decennial census triggers a mandatory legal duty for the District to adjust its division boundaries
- Must comply with state law and constitutional principles to ensure ratepayers receive fair and equal representation

# CURRENT DIVISION BOUNDARIES



# ALTERNATIVE 1A

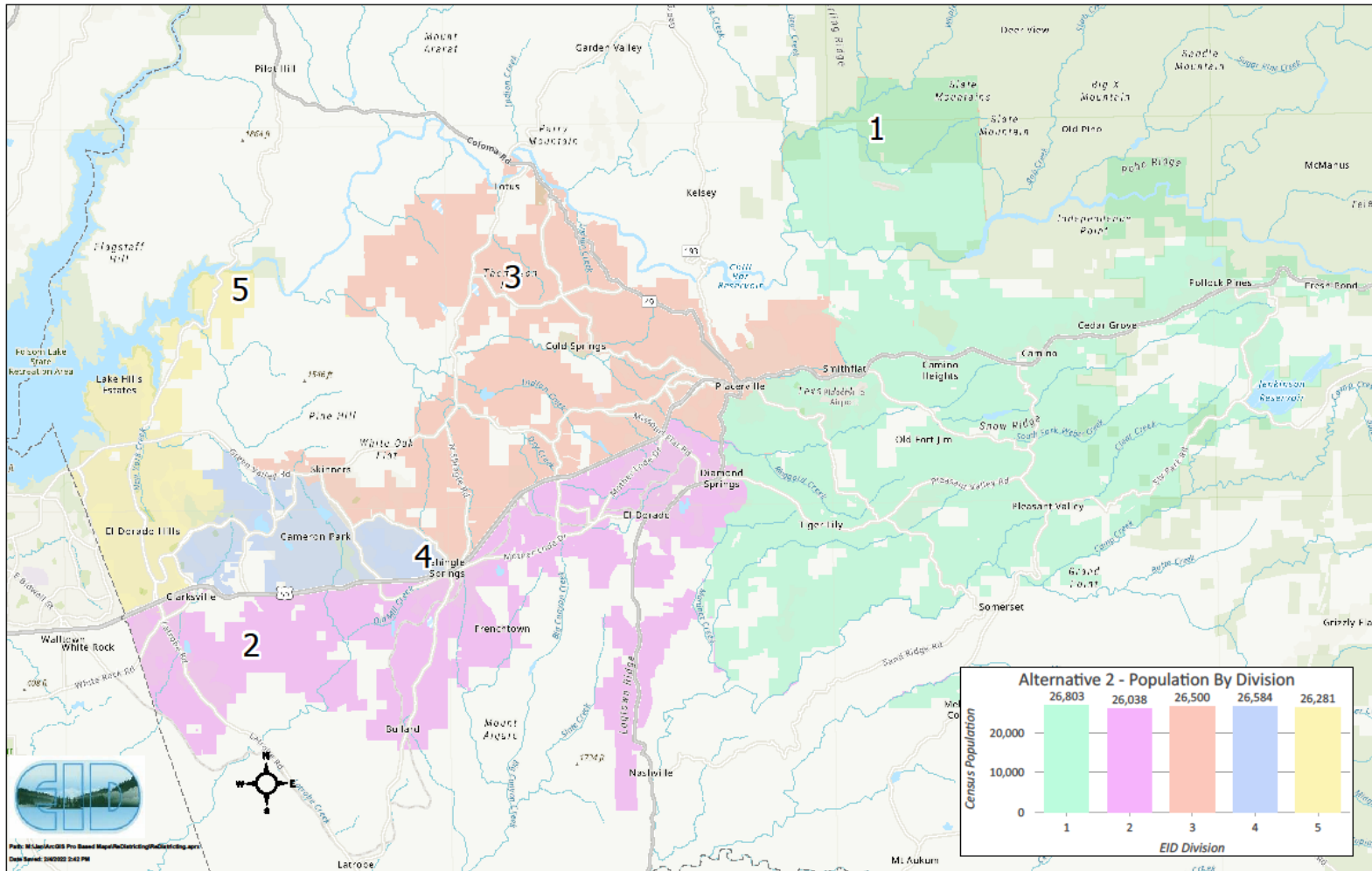




# ALTERNATIVE 1A

	Division 1	Division 2	Division 3	Division 4	Division 5	Total Voter Disruption
<b>Population of Voter Disruption Even to Odd Division Movement</b>	1,610	—	2,577	—	794	4,981
<b>Water Service Connections</b>	9,178	8,246	6,299	10,177	9,608	—
<b>Agriculture Service Connections</b>	256	197	444	7	12	—
<b>Sewer Service Connections</b>	1,657	4,788	320	9,760	8,871	—
<b>Recycled Water Service Connections</b>	0	0	0	4,647	993	—

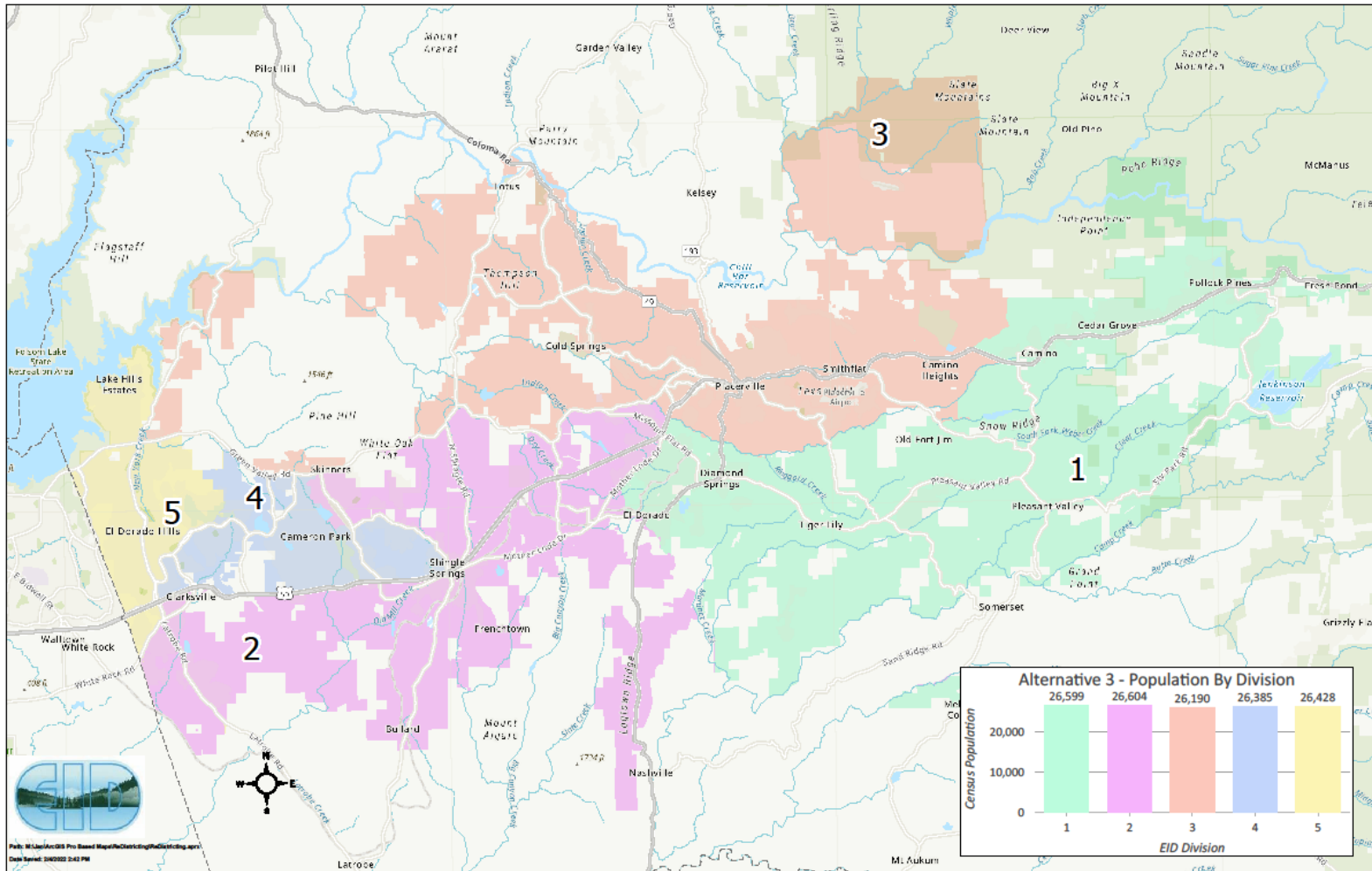
# ALTERNATIVE 2



# ALTERNATIVE 2

	Division 1	Division 2	Division 3	Division 4	Division 5	Total Voter Disruption
<b>Population of Voter Disruption Even to Odd Division Movement</b>	1,514	—	9,085	—	794	11,393
<b>Water Service Connections</b>	8,298	9,636	6,668	9,299	9,608	—
<b>Agriculture Service Connections</b>	325	178	392	9	12	—
<b>Sewer Service Connections</b>	217	6,186	1,484	8,638	8,871	—
<b>Recycled Water Service Connections</b>	0	2,109	0	2,538	993	—

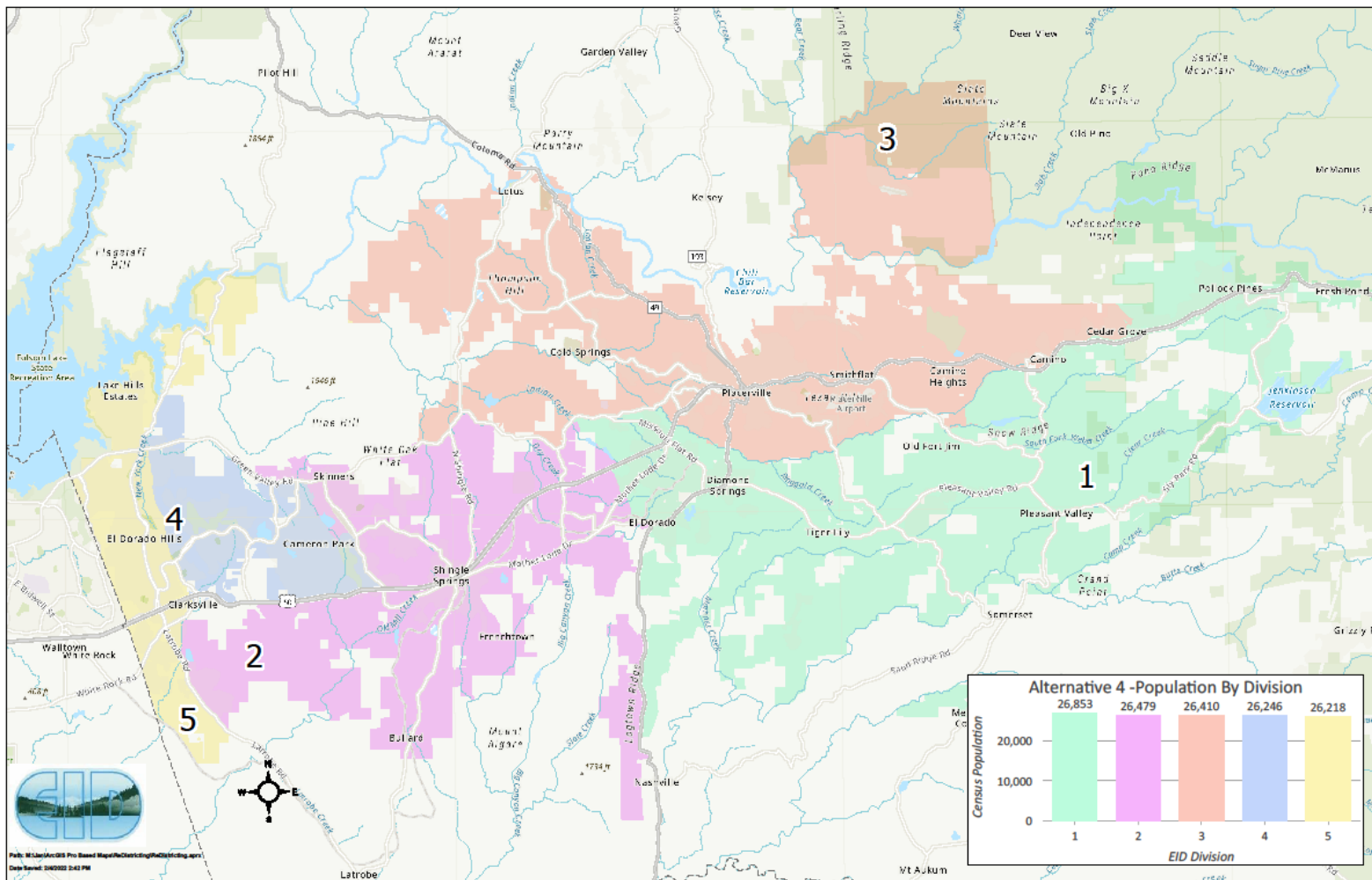
# ALTERNATIVE 3



# ALTERNATIVE 3

	Division 1	Division 2	Division 3	Division 4	Division 5	Total Voter Disruption
<b>Population of Voter Disruption Even to Odd Division Movement</b>	2,278	—	1,092	—	0	3,370
<b>Water Service Connections</b>	9,094	9,461	6,341	9,096	9,517	—
<b>Agriculture Service Connections</b>	230	242	422	9	13	—
<b>Sewer Service Connections</b>	1,732	5,683	652	8,407	8,922	—
<b>Recycled Water Service Connections</b>	0	2,104	0	2,838	698	—

# ALTERNATIVE 4



# ALTERNATIVE 4

	Division 1	Division 2	Division 3	Division 4	Division 5	Total Voter Disruption
<b>Population of Voter Disruption Even to Odd Division Movement</b>	4,394	—	0	—	1,653	6,047
<b>Water Service Connections</b>	9,127	7,985	6,541	9,371	10,485	—
<b>Agriculture Service Connections</b>	205	211	481	3	16	—
<b>Sewer Service Connections</b>	1,859	4,664	213	9,074	9,586	—
<b>Recycled Water Service Connections</b>	0	1,479	0	3,146	1,015	—

# PUBLIC OUTREACH

**El Dorado Irrigation District**  
Serving people, agriculture, businesses, and the environment in northern California's El Dorado County since 1925

ABOUT US CUSTOMERS OUR SERVICES RECREATION DOING BUSINESS WITH EID REGULATORY I WANT TO...

EID Response to COVID-19  
+ District Information  
+ Document Library  
Mission and Guiding Principles  
+ Board of Directors  
+ Departments  
+ Community Outreach  
+ Employment  
+ ADA  
Other Agency Links  
+ Project Updates  
Enterprise System Catalog  
Government Compensation in California Website (Gov. Code Sect. 53908)  
Financial Transaction Report (Gov. Code Sect. 53891a)  
**Redistricting 2021**

About Us »  
Redistricting 2021

Font size: + - Share & Bookmark Feedback Print

## EID Redistricting

Welcome to the EID redistricting page. Please bookmark this page and check back frequently for the most up-to-date information.

- Dedicated page on District website:
- <https://www.eid.org/redistricting>
- Interactive alternative maps available



## NEXT STEPS

- Staff will hold a Public Hearing March 28 to present final alternative maps to the Board and public for adoption

QUESTIONS?

# BOARD OPTIONS

- None – Information only