

2010 LAKE ALOHA MOUNTAIN YELLOW-LEGGED FROG SURVEYS

*El Dorado County, California
El Dorado Hydroelectric Project (FERC No. 184)*

Garcia and Associates
Natural and Cultural Resource Consultants



GANDA



January 2011

PREPARED FOR:

El Dorado Irrigation District
2890 Mosquito Road
Placerville, CA 95667

PREPARED BY:

Garcia and Associates
1 Saunders Avenue
San Anselmo, CA 94960

2010 Lake Aloha Mountain Yellow-Legged Frog Surveys

EL DORADO HYDROELECTRIC PROJECT (FERC No.184)

Submitted to:

**El Dorado Irrigation District
2890 Mosquito Road
Placerville, CA 95677**

Submitted by:



Garcia and Associates
1 Saunders Avenue
San Anselmo, CA 94960
Phone: (415) 458-5803
Fax: (415) 458-5829

January 2011

TABLE OF CONTENTS

1.0	INTRODUCTION	1
1.1	Project Background.....	1
2.0	METHODS	1
2.1	Study Area	1
2.2	MYLF/Herpetofauna Surveys	2
3.0	RESULTS	2
3.1	MYLF/Herpetofauna Observations.....	3
4.0	DISCUSSION	3
5.0	REFERENCES.....	4

List of Figures

Figure 1. Sampling locations and results of 2010 MYLF surveys below Lake Aloha auxiliary dams	5
-----------------------------------------------------------------------------------------------------	---

List of Tables

Table 1. Summary of 2010 MYLF observations from the ponds below Lake Aloha.....	6
---------------------------------------------------------------------------------	---

APPENDICES

Appendix A – 2010 Site Photos and Herpetofauna Photos

Appendix B – 2010 Amphibian and Fish Inventory Datasheets and Field Notes

1.0 INTRODUCTION

1.1 Project Background

The El Dorado Irrigation District (District) owns and operates the El Dorado Hydroelectric Project (Project 184), which is licensed by the Federal Energy Regulatory Commission (FERC). As a requirement of the FERC Project 184 license, the District is required to conduct surveys for Mountain Yellow-legged Frog (MYLF)¹ and remove trout from the ponds and habitats downstream of Lake Aloha auxiliary dams following a spill event. Lake Aloha spilled during spring runoff between June 5 and 12, 2010, and again from June 25 – July 3, 2010 (EID 2010); therefore, under the provisions of the FERC Project 184 license requirements, MYLF surveys and trout removal were required in 2010. The District contracted with Garcia and Associates (GANDA) to conduct protocol surveys for MYLF concurrently with trout removal efforts in the ponds below the auxiliary dams. Results of the 2010 MYLF surveys are reported herein. Results of the 2010 trout removal efforts are reported under separate cover.

2.0 METHODS

2.1 Study Area

The study area consisted of the vicinity of the spillway path below the seven auxiliary dams at the southeast end of Lake Aloha downstream to the confluence with Channel Lake (see Figure 1). All surface waters in the auxiliary spillway path were surveyed, along with several ponds in the immediate vicinity that could be connected to the spillway path during high flows (i.e., ponds or other potential frog habitat located just above the spillway path where fish passage may occasionally be possible). The ponds surveyed in 2010 are the same as were surveyed in 2007 (GANDA 2007).

Each surveyed pond was described according to the CDFG Sierra Nevada Fish and Amphibian Survey Protocol (CDFG 2009). The perimeter of each pond was

¹ In 2008, the Society for the Study of Amphibians and Reptiles recognized the Mountain Yellow-legged frog as two distinct species, *Rana muscosa* - Southern Mountain Yellow-legged Frog (MYLF) and *Rana sierrae* - Sierra Nevada Yellow-legged Frog (SNYLF). SNYLF is the species native to the SF American River watershed that is addressed in this report; however, this report uses the nomenclature MYLF to be consistent with the terminology used in the Project 184 license documents.

mapped using a handheld GPS unit and a sketch was also made in the field notes. The auxiliary spillway path was mapped using a GPS track. Pond characteristics such as water temperature, color, turbidity, depth, and littoral/shoreline zone substrate composition were recorded along with survey conditions (e.g., wind and weather conditions) on the Amphibian and Fish Inventory Datasheet (i.e., the CDFG protocol standard).

2.2 MYLF/Herpetofauna Surveys

Protocol surveys for MYLF were conducted throughout the study area following the CDFG Sierra Nevada Fish and Amphibian Survey Protocol (CDFG 2009). This procedure focuses on visual encounter surveys (VES) for various amphibian and reptile species; our primary focus was on the life stages of MYLF potentially present during our survey: larvae (i.e., hatch-year and over-winter tadpoles), juveniles (i.e., metamorphs and subadult frogs), and adults (i.e., frogs of breeding age).

VES was conducted by a minimum of two biologists walking slowly around the perimeter of each pond. Observers paused often to look ahead for basking animals. Dip nets were used to sweep habitat and banks in an effort to spook animals as well as to catch animals for identification (specimens were also captured by hand). The total number of individuals observed by species and life stage was recorded in the appropriate field on the standard CDFG inventory datasheet. Adult (≥ 40 mm snout-urostyle length, SUL) and juvenile (< 40 mm SUL) MYLF specimens were measured to the nearest millimeter of snout-vent length (SVL); larval MYLF specimens were measured to the nearest millimeter of total length (TL).

In addition to MYLF, all other herpetofauna observations were recorded. All snakes that were captured were palpated in order to determine which species were readily being preyed upon, then released.

3.0 RESULTS

In 2010, a total of 24 ponds (labeled Ponds A through X) were surveyed in the study area. MYLF were observed in 19 of these ponds (MYLF were observed in 16 ponds in 2007; GANDA 2007). Other herpetofauna observed in 2010 included Sierran tree frog (*Pseudacris sierra*; formerly Pacific tree frog [*Hyla regilla*]) and western terrestrial garter snake (*Thamnophis elegans*). Fairy shrimp (*Streptocephalus sealii*) were found in eight of the ponds in 2010. Site photos for

each pond are provided in Appendix A. Inventory datasheets and field notes are located in Appendix B.

3.1 MYLF/Herpetofauna Observations

MYLF observations are summarized in Table 1. A total of 21 adult MYLF, 29 juveniles (subadults), and 34 larvae (over-winter tadpoles) were observed during the 2010 surveys. No MYLF egg masses, hatch-year tadpoles, or metamorphs were observed during the surveys. Locations of each MYLF observation are noted in Figure 1. Adult MYLF ranged from 40 to 70 mm SVL and juvenile (subadult) MYLF ranged from 28 to 39 mm SVL. Most MYLF were observed while basking near the edges of the ponds. Over-winter tadpoles ranged in size from approximately 70 to 80 mm TL.

Tree frog tadpoles were common and often abundant in the survey ponds (no adult tree frogs were observed). Tree frog tadpoles were observed in 13 of the 24 survey ponds (approximately 1200 individuals total). A total of 21 western terrestrial garter snakes were observed at nine of the 24 ponds (11 adult and 10 subadult snakes). Most snakes that were palpated had empty stomachs, but one had been feeding on tree frog tadpoles. Photos of various herpetofauna observed are provided along with site photos in Appendix A.

4.0 DISCUSSION

Overall, 2010 observations indicate that the MYLF population in the study area is fairly robust. Similar numbers of adult and subadult frogs were observed in 2010 as in 2007, which was significantly more than was observed in the initial herpetofauna survey conducted in 2004. However, many more overwinter tadpoles were observed in 2010 than were in 2007. It is unclear whether the increased number of observations is a result of surveying later in the season (August 2010 as opposed to July 2007) or if the increase reflects improved breeding conditions and/or recruitment during 2009 as compared to 2006.

In 2010, MYLF were observed in Pond J (the same location where 12 brook trout were captured in 2010, and where 2 brook trout were captured in 2007), in Pond I (where 4 brook trout were captured in 2010), and in Pond A (where brook trout were captured in 2004).

5.0 REFERENCES

California Department of Fish and Game (CDFG) 2009. Sierra Nevada Fish and Amphibian Inventory Data Sheet Instructions. California Department of Fish & Game Fish/Amphibian Survey Protocols - Version 2.4, April 10, 2009.

El Dorado Irrigation District (EID). 2010. Federal Energy Regulatory Commission Project 184-CA 2010 Lake Aloha Spill Monitoring Report. 5 pp.

EN2 Resources Inc. (EN2) 2004. Lake Aloha 2004 Initial Trout Survey and Removal Report. El Dorado Hydroelectric Project (FERC Project No. 184). October 2004.

GANDA 2007. Final Report 2007 Lake Aloha Mountain Yellow-Legged Frog Surveys El Dorado Hydroelectric Project (FERC No.184). February 2008.

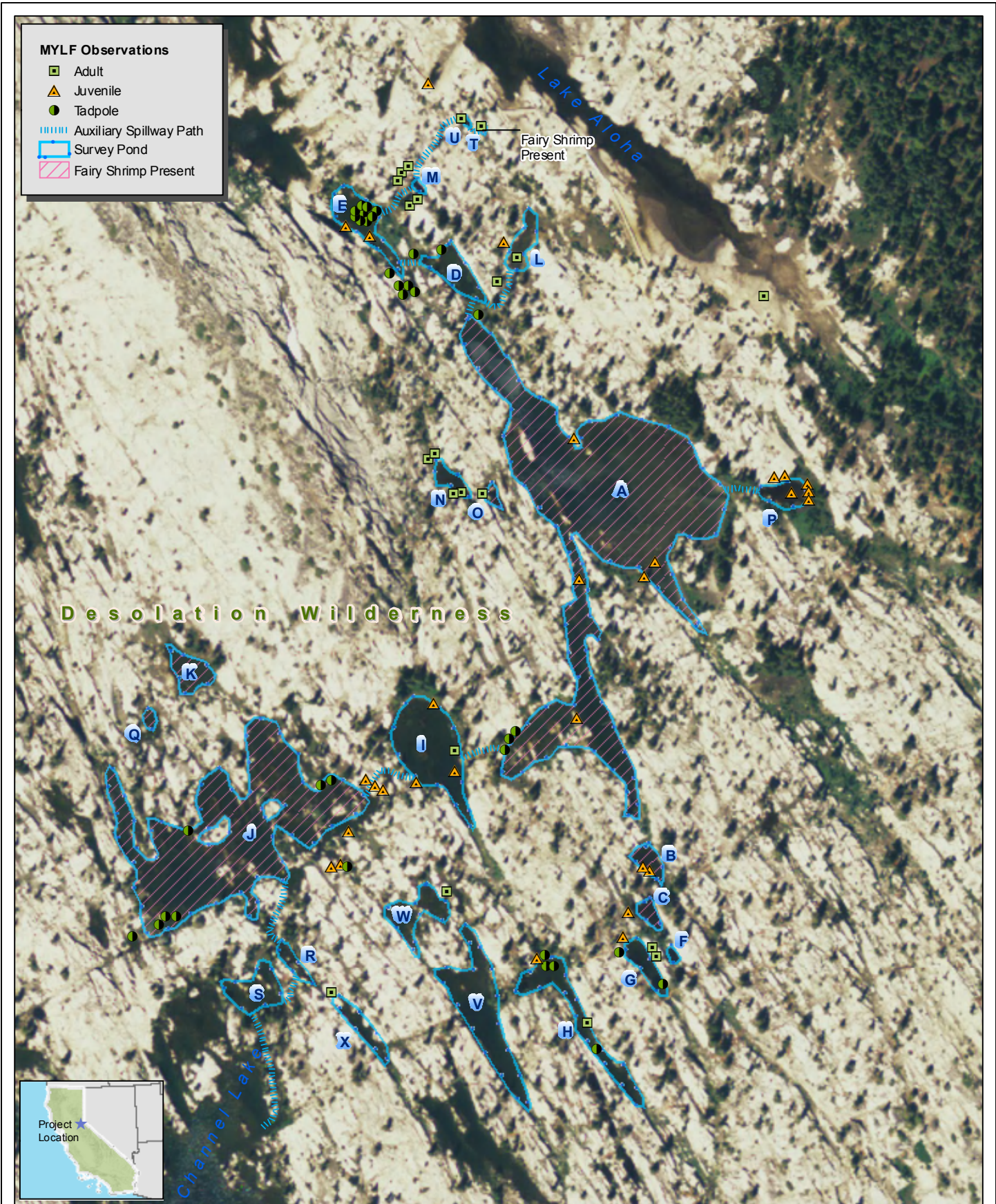


Figure 1. Sampling Locations and Results of 2010 MYLF Surveys below Lake Aloha Auxiliary Dams

El Dorado County, California

Table 1. Summary of 2010 MYLF observations from the ponds below Lake Aloha.

POND	DATE	LENGTH (mm)	LIFE STAGE	SEX	UTM (NAD 27)	
					EASTING	NORTHING
A	5-Aug	34	subadult	—	749104	4304760
A	5-Aug	50	adult	female	749297	4304637
A	5-Aug		tadpole	—	749150	4304382
A	5-Aug		tadpole	—	749150	4304382
A	5-Aug		tadpole	—	749150	4304382
A	5-Aug	35	subadult	—	749189	4304394
A	5-Aug	38	subadult	—	749191	4304474
A	5-Aug	32	subadult	—	749228	4304476
A	5-Aug	33	subadult	—	749234	4304484
A	5-Aug	28	subadult	—	749188	4304555
B	5-Aug	32	subadult	—	749231	4304306
B	5-Aug	35	subadult	—	749231	4304306
C	5-Aug	36	subadult	—	749219	4304282
D	8/3	70	tadpole	—	749095	4304661
D	8/3	70	tadpole	—	749111	4304664
D	8/3	35	tadpole	—	749133	4304626
E	8/3		tadpole	—	749066	4304684
E	8/3		tadpole	—	749066	4304684
E	8/3		tadpole	—	749066	4304684
E	8/3		tadpole	—	749066	4304684
E	8/3		tadpole	—	749066	4304684
E	8/3		tadpole	—	749066	4304684
E	8/3		tadpole	—	749066	4304684
E	8/3		tadpole	—	749066	4304684
E	8/3		tadpole	—	749046	4304638
E	8/3	35	subadult	—	749056	4304677
E	8/3	31	subadult	male	749070	4304672
E	8/3		tadpole	—	749092	4304643
E	8/3		tadpole	—	749092	4304643
E	8/3		tadpole	—	749092	4304643
E	8/3		tadpole	—	749092	4304643
F	5-Aug	47	adult	female	749233	4304262
F	5-Aug	48	adult	male	749233	4304262
G	5-Aug	39	subadult	—	749216	4304268
G	5-Aug		tadpole	—	749214	4304259

Table 1 continued. Summary of 2010 MYLF observations from the ponds below Lake Aloha.

POND	DATE	LENGTH (mm)	LIFE STAGE	SEX	UTM (NAD 27)	
					EASTING	NORTHING
G	5-Aug	30	tadpole	—	749239	4304240
H	5-Aug	70	tadpole	—	749201	4304203
H	5-Aug	66	adult	female	749195	4304218
H	5-Aug	65	tadpole	—	749172	4304251
H	5-Aug		tadpole	—	749172	4304251
H	5-Aug		subadult	—	749166	4304256
H	5-Aug		tadpole	—	749166	4304256
I	4-Aug	35	subadult	—	749097	4304357
I	4-Aug	30	subadult	—	749107	4304402
I	4-Aug	35	subadult	—	749119	4304363
I	4-Aug	40	adult	—	749119	4304375
J	4-Aug		tadpole	—	748952	4304279
J	4-Aug		tadpole	—	748952	4304279
J	4-Aug		tadpole	—	748952	4304279
J	4-Aug		tadpole	—	748933	4304268
J	4-Aug		tadpole	—	748965	4304329
J	4-Aug		tadpole	—	749042	4304355
J	4-Aug		tadpole	—	749042	4304355
J	4-Aug	35	subadult	—	749073	4304355
J	4-Aug	35	subadult	—	749073	4304355
J	4-Aug	35	subadult	—	749073	4304355
J	4-Aug	31	subadult	—	749058	4304329
J	4-Aug	30	subadult	—	749053	4304310
J	4-Aug	30	subadult	—	749053	4304310
J	4-Aug		tadpole	—	749053	4304310
L	3-Aug	49	adult	female	749155	4304659
L	3-Aug	52	adult	male	749143	4304645
L	3-Aug	33	subadult	—	749147	4304668
M	3-Aug	46	adult	male	749088	4304708
M	3-Aug	48	adult	male	749088	4304708
M	3-Aug	50	adult	—	749088	4304708
M	3-Aug	51	adult	male	749093	4304689
M	3-Aug	70	adult	female	749093	4304689
N	5-Aug	47	adult	male	749123	4304524

Table 1 continued. Summary of 2010 MYLF observations from the ponds below Lake Aloha.

N	5-Aug	45	adult	male	749104	4304543
N	5-Aug	42	adult	female	749104	4304543
O	5-Aug	43	adult	male	749135	4304523
P	4-Aug	30	subadult	—	749393	4304521
P	4-Aug	33	subadult	—	749393	4304521
P	4-Aug	35	subadult	—	749393	4304521
P	4-Aug	35	subadult	—	749303	4304533
P	4-Aug	31	subadult	—	749303	4304533
P	4-Aug	32	subadult	—	749313	4304524
T	3-Aug	41	adult	female	749134	4304739
U	3-Aug	47	adult	female	749123	4304739
W	5-Aug	43	adult	male	749114	4304294
X	5-Aug	46	adult	female	749048	4304236

Appendix A:
2010 Site Photos and Herpetofauna Photos



Photo 1. Pond A, view from west end looking east.

8/05/10



Photo 2. Pond B, view from east end of pond looking west.

8/05/10



Photo 3. Pond C, view from east end of pond looking west.

8/05/10

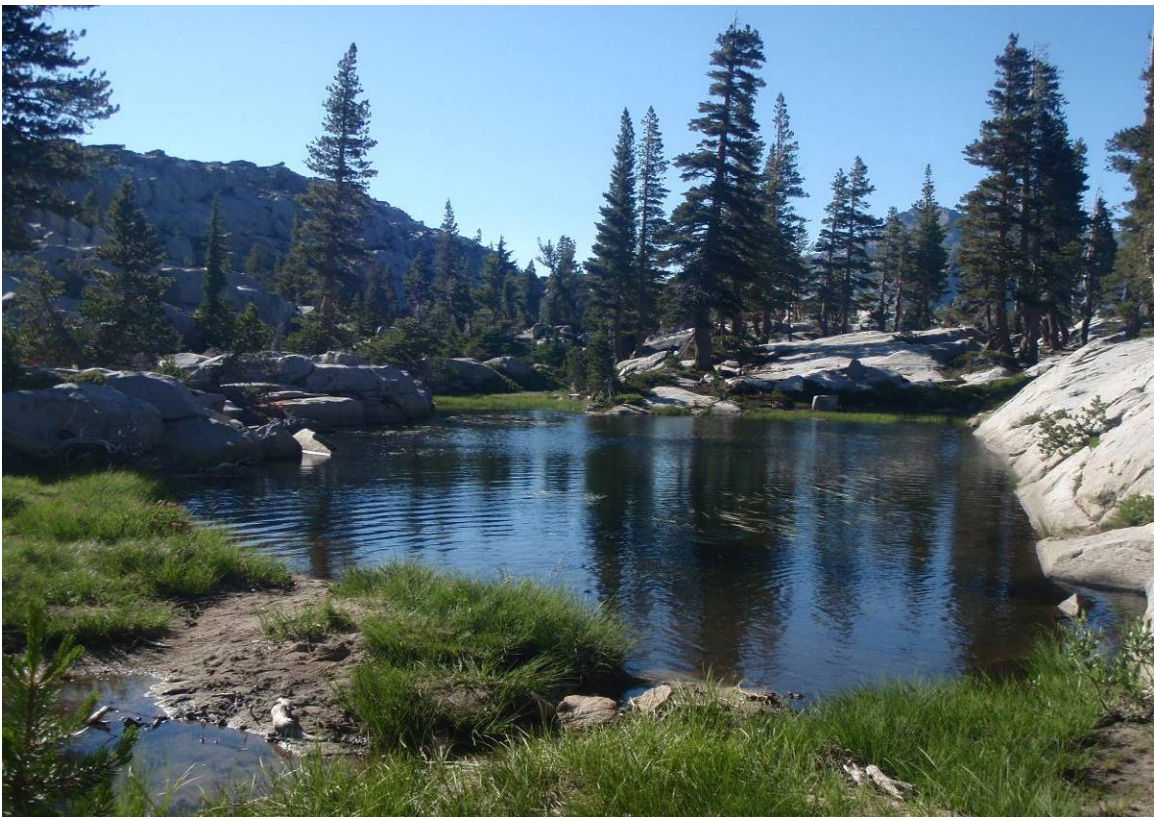


Photo 4. Pond D, view from southeast end of pond looking northwest.

8/03/10



Photo 5. Pond E, view from north end of pond looking south.

8/03/10



Photo 6. Pond F, view from south end of pond looking north.

8/05/10



Photo 7. Pond G, view from north end of pond looking south.

8/05/10



Photo 8. Pond H, view from southeast end of pond looking northwest.

8/05/10



Photo 9. Pond I, view from northwest end of pond looking southeast.

8/04/10



Photo 10. Pond J, view from southeast end (midsite) looking northwest.

8/04/10



Photo 11. Pond K, view from southeast end looking northwest.

8/04/10



Photo 12. Pond L.

8/03/10



Photo 13. Pond M, view from north end looking south.

8/03/10



Photo 14. Pond N, view from southeast end looking northwest.

8/05/10



Photo 15. Pond O, view from east end looking west.

8/05/10



Photo 16. Pond P, view from east end looking west.

8/04/10



Photo 17. Pond Q, view from northwest end looking southeast.

8/04/10



Photo 18. Pond R, view from southeast end looking northwest.

8/05/10



Photo 19. Pond S, view from north end looking south.

8/05/10



Photo 20. Pond T, view from south end looking north towards Lake Aloha.

8/03/10



Photo 21. Pond U, view from north end looking south.

8/03/10

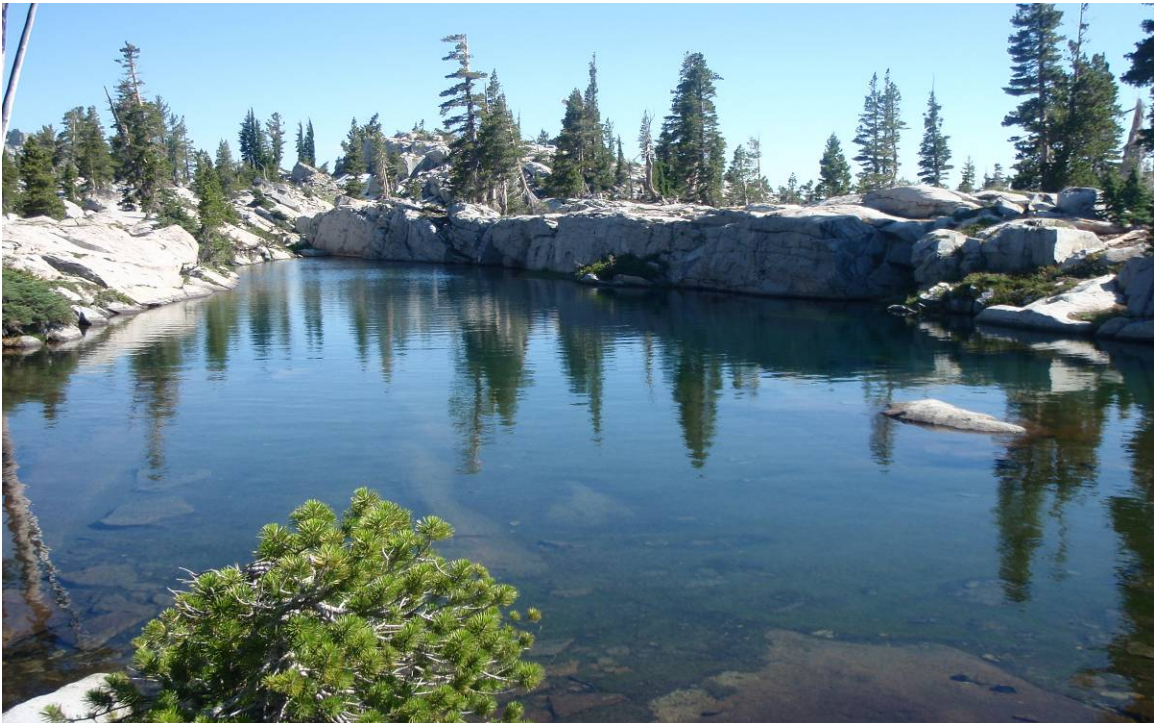


Photo 22. Pond V, view from northwest end looking southeast.

8/05/10



Photo 23. Pond W, view from south end looking north.

8/05/10



Photo 24. Pond X, view from north end looking south.

8/05/10



Photo 25. MYLF tadpole observed in Pond J.

8/04/10



Photo 26. Typical MYLF tadpole microhabitat (shown at bottom right).

8/03/10



Photo 27. Juvenile MYLF observed in Pond E.

8/03/10



Photo 28. Adult female MYLF observed in Pond N.

8/05/10



Photo 29. Adult MYLF captured in Pond L.

8/03/10



Photo 30. Surveying the ponds near Lake Aloha .

8/03/10



Photo 31. Surveying for MYLF.

8/03/10



Photo 32. Surveying for MYLF.

8/05/10



Photo 33. Adult MYLF captured in Pond L.

8/03/10



Photo 34. Measuring an adult MYLF captured in Pond L.

8/03/10



Photo 35. Adult MYLF along the margin of Pond G.

8/05/10



Photo 36. Adult MYLF captured in Pond L.

8/03/10



Photo 37. Overview of Auxiliary Spillway: Ponds below dams. Pond E is the nearest pond. 8/04/10

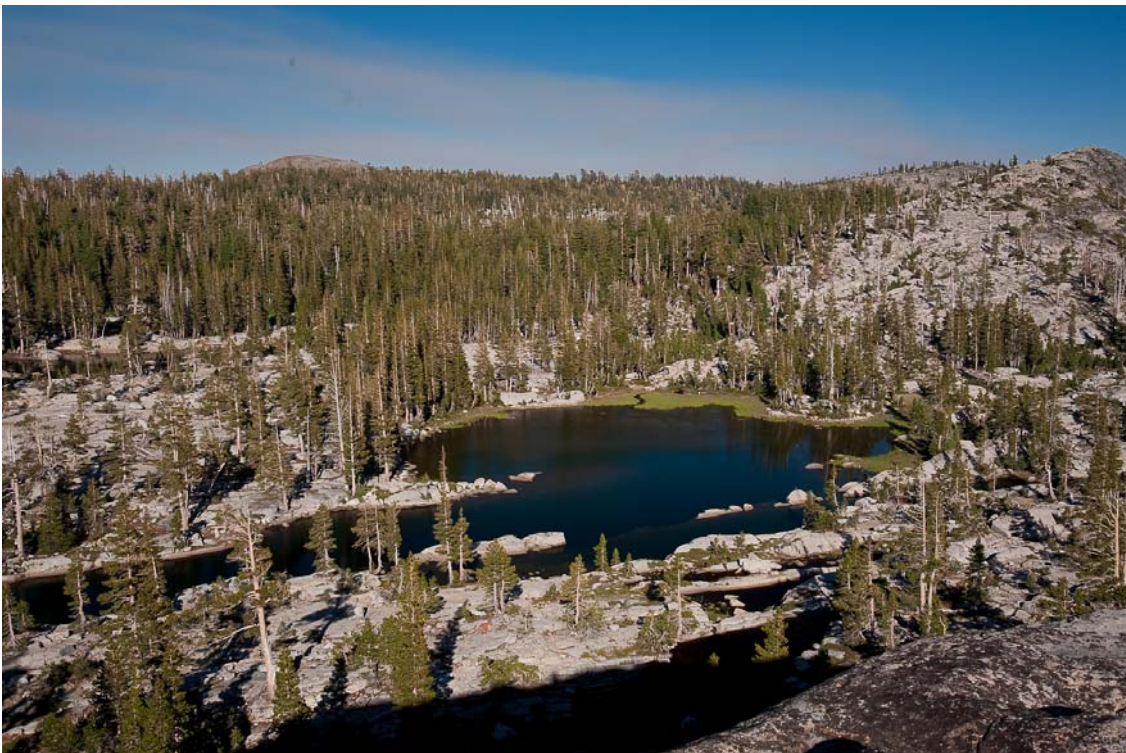


Photo 38. Overview of Auxiliary Spillway: Pond A. 8/04/10



Photo 39. Overview of Auxiliary Spillway: Downstream portion of Pond A. 8/04/10



Photo 40. Overview of Auxiliary Spillway: Pond J and southern ponds. Channel lake is in the distance. 8/04/10



Photo 41. Adult MYLF in pond Margin Habitat.

8/03/10

Appendix B:
2010 Amphibian and Fish Inventory Datasheets and
Field Notes

Incidental SNYLFs in Lake Aloha:
 08-05-10, 1 juv. obs. by I. Chan, ~34mm
 UTM: 0749104 - 4304760
 08-05-10, 1 ♀ adult, obs. (caught) by K. Wiseman + R. Aramayo
 50mm, 14 grams, RW photos 562-64
 UTM: 0749297 - 4304687

SNYLF Amphibian Data Sheet - 2009

Site ID: Pond A	Date: 08-05-10 (mmm-dd-yy)	Water type: Lake <u>Unmapped pond</u> Stream Marsh Spring seep Perennial Ephemeral	If not sampled, reason: stream widening frozen, dry, or not found part of another water body			
Lake Name: (from map)	Planning Watershed: (from "Lakes Checklist")	Location (use common language)				
County:	Elevation: m ft	East UTM:	North UTM: (only for lakes w/o a site ID; obtain from GPS unit)			
Topographic Map (7.5'):	Weather: <u>Clear</u> Overcast Rain Snow	Wind: <u>Calm</u> Light Strong	pH: <u> </u> source:	Max. lake depth (m): ~4.0		
Amphibian observer(s): K. Wiseman, C. Scott	Survey start time: 1112 End time (hhmm): 1237	Total survey duration: (min) 1hr. 25 mins	Weather: <u>Clear</u> Overcast Rain Snow Wind: <u>Calm</u> Light Strong			
Stream Start only:	East UTM North UTM	End East UTM North UTM	Stream order:	Color: <u>Clear</u> Stained Turbidity: <u>Clear</u> Cloudy		
Amphibian/reptile species	# adults	# subadults	# larvae	# egg masses	Comments	Survey Method
RASI Calling? Y <input checked="" type="checkbox"/> N Voucher? Y <input checked="" type="checkbox"/> N #		III = 5	III = 3		Shorewater body F. juv. Notes below	Visual Aural Dip Net/Seine Trapped Hand Collected
THEL Calling? Y <input checked="" type="checkbox"/> N Voucher? Y <input checked="" type="checkbox"/> N #	III (44cm SVL) II (89cm SVL) = 5	1 (21cm SVL) 70% no stream contacts			No similar R. Contacts Eggs (1/40)	Visual Aural Dip Net/Seine Trapped Hand Collected
PSSI Calling? Y <input checked="" type="checkbox"/> N Voucher? Y <input checked="" type="checkbox"/> N #			III = 25 10 20 10 = 70		70 tad.	Visual Aural Dip Net/Seine Trapped Hand Collected
Calling? Y <input type="checkbox"/> N Voucher? Y <input type="checkbox"/> N #						Visual Aural Dip Net/Seine Trapped Hand Collected
Calling? Y <input type="checkbox"/> N Voucher? Y <input type="checkbox"/> N #						Visual Aural Dip Net/Seine Trapped Hand Collected
Water Temp. (.5m from shore, 10cm deep): 18.5 @ edge @ 18.0 @ 1m C or F		Air Temp. (1m above water): 24.0 @ 1m above C or F				

amphibians: Sierra Nevada yellow-legged frog (RASI), Sierran treefrog (PSSI), CA newt (TATO), bullfrog (LICA), long-toed salamander (AMMA)
 reptiles: W. aquatic garter snake (THCO) W. terrestrial garter snake (THEL) common garter snake (THSI) W. pond turtle (CLMA)
 fish: rainbow trout (RT), golden trout (GT), cutthroat trout (CT), brown trout (BN), brook trout (BK), hybrids (GT x RT, CT x RT)

* Fairy shrimp present
 (Streptocephalus denitator)

Photos:
 KW 499-502: RASI 5
 KW 503-04: RASI 6
 KW 505-06: RASI 7
 LC 1: RASI 8
 KW 50498+507: Pond A site photo

UTM's
 RASI 3: 0749150 - 4304382
 RASI 4: 0749129 - 4304294
 RASI 5: 0749191 - 4304474
 RASI 6: 0749228 - 4304476
 RASI 7: 0749234 - 4304484
 RASI 8: 0749188 - 4304555

RASI 1-3: Tadps, 60-84 (Obs. by I. Chan 8-4-10)
 RASI 4: juv, ~35mm
 RASI 5: juv, 38mm, backing
 RASI 6: juv, 32mm, backing
 RASI 7: juv, ~33mm, in 1120
 RASI 8: juv, 28.5mm, obs. by I. Chan on 8-3-10

SNYLF Amphibian Data Sheet - 2009

Site ID: <i>Pond B</i>	Date: <i>08-05-10</i> (mmm-dd-yy)	Water type: Lake <input checked="" type="checkbox"/> <u>Unmapped pond</u> Stream Marsh Spring seep Perennial Ephemeral	If not sampled, reason: stream widening frozen, dry, or not found part of another water body			
Lake Name: (from map)	Planning Watershed: (from "Lakes Checklist")	Location (use common language)				
County:	Elevation: m ft	East UTM:	North UTM: (only for lakes w/o a site ID; obtain from GPS unit)			
Topographic Map (7.5):	Weather: <input checked="" type="checkbox"/> Clear <input type="checkbox"/> Overcast <input type="checkbox"/> Rain <input type="checkbox"/> Snow	Wind: Calm <input checked="" type="checkbox"/> Light <input type="checkbox"/> Strong	pH: _____ source:	Max. lake depth (m): <i>1.5</i>	Team members: <i>I. Chan, C. Scott, K. Wiseman, R. Avamayo</i>	
Amphibian observer(s): <i>K. Wiseman, C. Scott, I. Chan, R. Avamayo</i>	Survey start time: <i>1444</i>	Total survey duration: (min) <i>9</i>	Weather: <input checked="" type="checkbox"/> Clear <input type="checkbox"/> Overcast <input type="checkbox"/> Rain <input type="checkbox"/> Snow			
	End time (hhmm): <i>1453</i>		Wind: Calm <input checked="" type="checkbox"/> Light <input type="checkbox"/> Strong			
<i>Stream only:</i>	Start East UTM	North UTM	End East UTM	North UTM	Stream order:	Color: <input checked="" type="checkbox"/> Clear <input type="checkbox"/> (Stained)
						Turbidity: <input checked="" type="checkbox"/> Clear <input type="checkbox"/> Cloudy
Amphibian/reptile species	# adults	# subadults	# larvae	# egg masses	Comments	Survey Method
<i>RASI</i>		<i>11</i>			<i>2 juvs.</i>	<input checked="" type="checkbox"/> Visual <input type="checkbox"/> Trapped
Calling? <i>Y N</i>						<input type="checkbox"/> Aural <input checked="" type="checkbox"/> Hand Collected
Voucher? <i>Y N</i> # _____					<i>see notes</i>	<input type="checkbox"/> Dip Net/Seine
Calling? <i>Y N</i>						<input type="checkbox"/> Visual <input type="checkbox"/> Trapped
Voucher? <i>Y N</i> # _____						<input type="checkbox"/> Aural <input type="checkbox"/> Hand Collected
						<input type="checkbox"/> Dip Net/Seine
Calling? <i>Y N</i>						<input type="checkbox"/> Visual <input type="checkbox"/> Trapped
Voucher? <i>Y N</i> # _____						<input type="checkbox"/> Aural <input type="checkbox"/> Hand Collected
						<input type="checkbox"/> Dip Net/Seine
Calling? <i>Y N</i>						<input type="checkbox"/> Visual <input type="checkbox"/> Trapped
Voucher? <i>Y N</i> # _____						<input type="checkbox"/> Aural <input type="checkbox"/> Hand Collected
						<input type="checkbox"/> Dip Net/Seine
Water Temp. (.5m from shore, 10cm deep): <i>20.5/10 algae @ 18.5/10m (C) or F</i>		Air Temp. (1m above water): <i>24.0° @ (C) or F</i>				

amphibians: Sierra Nevada yellow-legged frog (RASI), Sierran treefrog (PSSI), CA newt (TATO), bullfrog (LICA), long-toed salamander (AMMA)
 reptiles: W. aquatic garter snake (THCO) W. terrestrial garter snake (THEL) common garter snake (THSI) W. pond turtle (CLMA)
 fish: rainbow trout (RT), golden trout (GT), cutthroat trout (CT), brown trout (BN), brook trout (BK), hybrids (GT x RT, CT x RT)

* *felony shrimp present (S. sentis)*

Photos:

KW 534-35: RASI 1

KW 533: Pond B limb.

UTMS:

RASI 1: 0749231-4304306

RASI 2:

Notes:

RASI 1: juv., 32mm, instar 1

RASI 2: juv., ~35mm

SNYLF Amphibian Data Sheet - 2009

Site ID: <i>Pond C</i>	Date: <i>08-05-10</i> (mmm-dd-yy)	Water type: Lake <u>(Unmapped pond)</u> Stream Marsh Spring seep Perennial Ephemeral	If not sampled, reason: stream widening frozen, dry, or not found part of another water body			
Lake Name: (from map)	Planning Watershed: (from "Lakes Checklist")	Location (use common language)				
County:	Elevation: m ft	East UTM:	North UTM: (only for lakes w/o a site ID; obtain from GPS unit)			
Topographic Map (7.5):	Weather: <u>Clear</u> Overcast Rain Snow	Wind: <u>Calm</u> Light Strong	pH: <u>—</u> source:	Max. lake depth (m): <u>0.75</u>		
Amphibian observer(s): <i>I. Chan, G. Smith, K. Wiseman</i>		Survey start time: <i>1455</i>	Total survey duration: (min) <i>10</i>	Team members: <i>C. Scott, I. Chan, R. Kawanago, K. Wiseman</i>		
End time (hhmm): <i>1501</i>		Weather: <u>Clear</u> Overcast Rain Snow		Wind: <u>Calm</u> Light Strong		
<i>Stream only:</i>	Start East UTM	North UTM	End East UTM	North UTM		
Stream order:	Color: <u>Clear</u> Stained		Turbidity: <u>Clear</u> Cloudy			
Amphibian/reptile species	# adults	# subadults	# larvae	# egg masses	Comments	Survey Method
<i>PSSI</i> Calling? Y <u>N</u> Voucher? Y <u>N</u> #			<i>45</i>		<i>115 Inds (sample)</i>	Visual Trapped Aural Hand Collected Dip Net/Seine
<i>RASI</i> Calling? Y <u>N</u> Voucher? Y <u>N</u> #		<i>1</i>			<i>1 juv</i> <i>seewater</i>	Visual Trapped Aural Hand Collected Dip Net/Seine
Calling? Y <u>N</u> Voucher? Y <u>N</u> #						Visual Trapped Aural Hand Collected Dip Net/Seine
Calling? Y <u>N</u> Voucher? Y <u>N</u> #						Visual Trapped Aural Hand Collected Dip Net/Seine
Calling? Y <u>N</u> Voucher? Y <u>N</u> #						Visual Trapped Aural Hand Collected Dip Net/Seine
Water Temp. (.5m from shore, 10cm deep): <i>21.5 @ edge @ 19 @ .75 @ or F</i>		Air Temp. (1m above water): <i>25°C @ 1m / 76 or F</i>				

amphibians: Sierra Nevada yellow-legged frog (RASI), Sierran treefrog (PSSI), CA newt (TATO), bullfrog (LICA), long-toed salamander (AMMA)
 reptiles: W. aquatic garter snake (THCO) W. terrestrial garter snake (THEL) common garter snake (THSI) W. pond turtle (CLMA)
 fish: rainbow trout (RT), golden trout (GT), cutthroat trout (CT), brown trout (BN), brook trout (BK), hybrids (GT x RT, CT x RT)

Photos:
 KW 536: Pond C hab.
 KW 537: RASI 1

UTMs:
 RASI 1: 0749219-4304282

Notes:
 RASI 1: juv., 36 mm, basking in H₂O
 * fairy shrimp present (S. sealii)

SNYLF Amphibian Data Sheet - 2009

Site ID: <i>Pond D</i>	Date: <i>08-03-10</i> (mmm-dd-yy)	Water type: Lake <u>Unmapped pond</u> Stream Marsh Spring seep	Perennial Ephemeral				
If not sampled, reason: stream widening frozen, dry, or not found part of another water body							
Lake Name: (from map)	Planning Watershed: (from "Lakes Checklist")	Location (use common language)					
County:	Elevation: m ft	East UTM:	North UTM: (only for lakes w/o a site ID; obtain from GPS unit)				
Topographic Map (7.5):	Weather: <u>Clear</u> Overcast Rain Snow	Wind: <u>Calm</u> Light Strong	pH: <u>—</u> source: Max. lake depth (m): <u>1.5</u> Team members: <i>K. Wiseman, I. Chan, C. Scott, R. Aramayo</i>				
Amphibian observer(s): <i>C. Scott, I. Chan, K. Wiseman</i>	Survey start time: <i>1649</i> End time (hhmm): <i>1705</i>	Total survey duration: (min) <i>16</i>	Weather: <u>Clear</u> Overcast Rain Snow Wind: <u>Calm</u> Light Strong				
<i>Stream only:</i> Start East UTM North UTM	End East UTM North UTM	Stream order:	Color: <u>Clear</u> Stained Turbidity: <u>Clear</u> Cloudy				
Amphibian/reptile species	# adults	# subadults	# larvae	# egg masses	Comments	Survey Method	
<i>THEL</i> Calling? Y <u>N</u> Voucher? Y <u>N</u> # <u>—</u>	<i>1 (107cm SVL)</i>	<i>1</i>			<i>adult w/ 3 PSS1 tads in stomach</i>	<u>Visual</u> Aural Dip Net/Seine Trapped Hand Collected	
<i>PSS1</i> Calling? Y <u>N</u> Voucher? Y <u>N</u> # <u>—</u>			<i>85</i>			<u>Visual</u> Aural Dip Net/Seine Trapped Hand Collected	
<i>RASI</i> Calling? Y <u>N</u> Voucher? Y <u>N</u> # <u>—</u>		<i>1</i>	<i>2</i>		<i>see below</i>	<u>Visual</u> Aural Dip Net/Seine Trapped Hand Collected	
Calling? Y N Voucher? Y N # <u>—</u>						Visual Aural Dip Net/Seine Trapped Hand Collected	
Calling? Y N Voucher? Y N # <u>—</u>						Visual Aural Dip Net/Seine Trapped Hand Collected	
Water Temp. (.5m from shore, 10cm deep): <i>23.5° @ 0.5m @ 1.5m</i> C or F		Air Temp. (1m above water): <i>28° @ 1m</i> C or F					

amphibians: Sierra Nevada yellow-legged frog (RASI), Sierran treefrog (PSSI), CA newt (TATO), bullfrog (LICA), long-toed salamander (AMMA)
 reptiles: W. aquatic garter snake (THCO) W. terrestrial garter snake (THEL) common garter snake (THSI) W. pond turtle (CLMA)
 fish: rainbow trout (RT), golden trout (GT), cutthroat trout (CT), brown trout (BN), brook trout (BK), hybrids (GT x RT, CT x RT)

Photos:

UTMs:
 KW435: RASI 1 RASI 1: 0749095-4304661
 KW436: RASI tad habitat RASI 2: 0749111-4304664
 KW437-438: RASI 2 RASI 3: 0749133-4304626
 KW439: Pond D

Notes: *RASI overwinter tads appear to be in grassy, shallow shorelines (KW436)
 RASI 1: tadpole, 70mm, GS: 54 (hind legs only)
 RASI 2: tadpole, ~70mm, GS: 54
 RASI 3: subadult, ~35mm, basking

SNYLF Amphibian Data Sheet - 2009

Site ID: <i>Pond E</i>	Date: <i>08-03-10</i> (mmm-dd-yy)	Water type: <input checked="" type="checkbox"/> Lake <input checked="" type="checkbox"/> <i>Unmapped pond</i> <input type="checkbox"/> Stream <input type="checkbox"/> Marsh <input type="checkbox"/> Spring seep <input type="checkbox"/> Perennial <input type="checkbox"/> Ephemeral	If not sampled, reason: stream widening frozen, dry, or not found part of another water body				
Lake Name: (from map)	Planning Watershed: (from "Lakes Checklist")	Location (use common language)					
County:	Elevation: m ft	East UTM:	North UTM: (only for lakes w/o a site ID; obtain from GPS unit)				
Topographic Map (7.5')	Weather: <input checked="" type="checkbox"/> Clear <input type="checkbox"/> Overcast <input type="checkbox"/> Rain <input type="checkbox"/> Snow	Wind: <input checked="" type="checkbox"/> Calm <input type="checkbox"/> Light <input type="checkbox"/> Strong	pH: <i>—</i> source:	Max. lake depth (m): <i>1.25</i>	Team members: <i>Amigo, Chan, Wiseman, Scott</i>		
Amphibian observer(s): <i>K. WISEMAN, I. CHAN, C. SCOTT</i>	Survey start time: <i>1616</i> End time (hhmm): <i>1645</i>	Total survey duration: (min) <i>29</i>	Weather: <input checked="" type="checkbox"/> Clear <input type="checkbox"/> Overcast <input type="checkbox"/> Rain <input type="checkbox"/> Snow Wind: <input checked="" type="checkbox"/> Calm <input type="checkbox"/> Light <input type="checkbox"/> Strong				
<i>Stream only:</i>	Start East UTM	North UTM	End East UTM	North UTM	Stream order:	Color: <input checked="" type="checkbox"/> Clear <input type="checkbox"/> Stained	Turbidity: <input checked="" type="checkbox"/> Clear <input type="checkbox"/> Cloudy
Amphibian/reptile species	# adults	# subadults	# larvae	# egg masses	Comments	Survey Method	
<i>THEL</i> Calling? Y <input checked="" type="checkbox"/> N <input type="checkbox"/> Voucher? Y N # _____		<i>5</i>			<i>1 = 35mm SVL NO STOMACH CONTENTS</i>	<input checked="" type="checkbox"/> Visual <input type="checkbox"/> Aural <input type="checkbox"/> Dip Net/Seine	<input type="checkbox"/> Trapped <input checked="" type="checkbox"/> Hand Collected
<i>RASI</i> Calling? Y <input checked="" type="checkbox"/> N <input type="checkbox"/> Voucher? Y N # _____		<i>2</i>	<i>1 (call out buccal opening)</i>		<i>1 measured at 76mm (see below)</i>	<input checked="" type="checkbox"/> Visual <input type="checkbox"/> Aural <input type="checkbox"/> Dip Net/Seine	<input type="checkbox"/> Trapped <input type="checkbox"/> Hand Collected
<i>PSSI</i> Calling? Y <input checked="" type="checkbox"/> N <input type="checkbox"/> Voucher? Y N # _____			<i>61</i>			<input checked="" type="checkbox"/> Visual <input type="checkbox"/> Aural <input type="checkbox"/> Dip Net/Seine	<input type="checkbox"/> Trapped <input type="checkbox"/> Hand Collected
Calling? Y N Voucher? Y N # _____						<input type="checkbox"/> Visual <input type="checkbox"/> Aural <input type="checkbox"/> Dip Net/Seine	<input type="checkbox"/> Trapped <input type="checkbox"/> Hand Collected
Calling? Y N Voucher? Y N # _____						<input type="checkbox"/> Visual <input type="checkbox"/> Aural <input type="checkbox"/> Dip Net/Seine	<input type="checkbox"/> Trapped <input type="checkbox"/> Hand Collected
Water Temp. (.5m from shore, 10cm deep): <i>24°C @ edge w/ + 20°C @ 1m</i> C or F		Air Temp. (1m above water): <i>27.5°C @ 1m @ above H₂O</i> C or F					

amphibians: Sierra Nevada yellow-legged frog (RASI), Sierran treefrog (PSSI), CA newt (TATO), bullfrog (LICA), long-toed salamander (AMMA)
 reptiles: W. aquatic garter snake (THCO) W. terrestrial garter snake (THEL) common garter snake (THSI) W. pond turtle (CLMA)
 fish: rainbow trout (RT), golden trout (GT), cutthroat trout (CT), brown trout (BN), brook trout (BK), hybrids (GT x RT, CT x RT)

UTMS:
 — UTMS for RASI tadpoles: *0749066/4304684*
 — UTMS for RASI tadpole 10: *0749046/4304683*
 Photos: *KW430-432: RASI tadpoles (1-9)*
KW433: Pond E showing area where RASI tads found
KW434: Microhabitat for RASI tadpole 10

RASI NOTES:
 - RASI tadpoles (1-9), all at Gosner stage ≤ 41 , all w/ back legs + no front legs; 1 measured at 76mm (avg of size all)
 - RASI tadpole # 10, same stage as 1-9, temp ~ 17°C in edgewater where found
 - RASI 11: ~35mm, basking (subadult)
 - RASI 12: ♂, 31mm, photos KW 381-84 (subadult)

UTMS RAS1 11: 0749056-4304677
 RAS1 12: 0749070-4304672
 RAS1 13-16: 0749092-4304643
 RAS1 13-16: tadpoles same approx. size as RAS1 1-10

SNYLF Amphibian Data Sheet - 2009

Site ID: <i>Pond F</i>	Date: <i>08-05-10</i> (mmm-dd-yy)	Water type: Lake <u>Unmapped pond</u> Stream Marsh Spring seep Perennial Ephemeral	If not sampled, reason: stream widening frozen, dry, or not found part of another water body				
Lake Name: (from map)	Planning Watershed: (from "Lakes Checklist")	Location (use common language)					
County:	Elevation: m ft	East UTM:	North UTM: (only for lakes w/o a site ID; obtain from GPS unit)				
Topographic Map (7.5):	Weather: <u>Clear</u> Overcast Rain Snow	Wind: Calm <u>Light</u> Strong	pH: _____ source:	Max. lake depth (m): <i>0.3 m</i>	Team members: <i>C. Scott, I. Chan, K. Wiseman, R. Aramayo</i>		
Amphibian observer(s): <i>C. Scott, K. Wiseman, I. Chan</i>	Survey start time: <i>1518</i> End time (hhmm): <i>1524</i>	Total survey duration: (min) <i>6</i>	Weather: <u>Clear</u> Overcast Rain Snow Wind: Calm <u>Light</u> Strong				
<i>Stream only:</i>	Start East UTM	North UTM	End East UTM	North UTM	Stream order:	Color: <u>Clear</u> <u>Stained</u>	Turbidity: <u>Clear</u> Cloudy
Amphibian/reptile species	# adults	# subadults	# larvae	# egg masses	Comments	Survey Method	
<i>RASI</i> Calling? Y <u>N</u> Voucher? Y <u>N</u> # _____	<i>1 ♀</i>				<i>see notes</i>	<u>Visual</u> Aural Dip Net/Seine	Trapped Hand Collected
Calling? Y <u>N</u> Voucher? Y <u>N</u> # _____						Visual Aural Dip Net/Seine	Trapped Hand Collected
Calling? Y <u>N</u> Voucher? Y <u>N</u> # _____						Visual Aural Dip Net/Seine	Trapped Hand Collected
Calling? Y <u>N</u> Voucher? Y <u>N</u> # _____						Visual Aural Dip Net/Seine	Trapped Hand Collected
Calling? Y <u>N</u> Voucher? Y <u>N</u> # _____						Visual Aural Dip Net/Seine	Trapped Hand Collected
Water Temp. (.5m from shore, 10cm deep): <i>26° @ edge @ 26° @ 0.5m</i> (C or F)		Air Temp. (1m above water): <i>24.5° @ 1m</i> (C or F)					

amphibians: Sierra Nevada yellow-legged frog (RASI), Sierran treefrog (PSSI), CA newt (TATO), bullfrog (LICA), long-toed salamander (AMMA)
 reptiles: W. aquatic garter snake (THCO) W. terrestrial garter snake (THEL) common garter snake (THSI) W. pond turtle (CLMA)
 fish: rainbow trout (RT), golden trout (GT), cutthroat trout (CT), brown trout (BN), brook trout (BK), hybrids (GT x RT, CT x RT)

Photos

*KW542: Pond F habitat
 KW543: RASI 1
 KW544: RASI 2*

*UTMS
 RASI 1: 0749233-4304262
 RASI 2:*

*Notes
 RASI 1: ♀, 47mm, basking
 RASI 2: ♂, 48mm, basking in shade*

SNYLF Amphibian Data Sheet - 2009

Site ID: Pond 6	Date: 08-05-10 (mmm-dd-yy)	Water type: Lake <input checked="" type="checkbox"/> Unmapped pond/ Stream Marsh Spring seep Perennial Ephemeral	If not sampled, reason: stream widening frozen, dry, or not found part of another water body			
Lake Name: (from map)	Planning Watershed: (from "Lakes Checklist")	Location (use common language)				
County:	Elevation: m ft	East UTM:	North UTM: (only for lakes w/o a site ID; obtain from GPS unit)			
Topographic Map (7.5'):	Weather: <input checked="" type="checkbox"/> Clear <input type="checkbox"/> Overcast <input type="checkbox"/> Rain <input type="checkbox"/> Snow	Wind: Calm <input checked="" type="checkbox"/> Light <input type="checkbox"/> Strong	pH: <u> </u> source:	Max. lake depth (m): 2.0	Team members: I. Chan, C. Scott, R. Aramayo, K. Wiseman	
Amphibian observer(s): K. Wiseman, C. Scott, I. Chan, R. Aramayo	Survey start time: 1506 End time (hhmm): 1515	Total survey duration: (min) 9	Weather: <input checked="" type="checkbox"/> Clear <input type="checkbox"/> Overcast <input type="checkbox"/> Rain <input type="checkbox"/> Snow Wind: Calm <input checked="" type="checkbox"/> Light <input type="checkbox"/> Strong			
Stream Start East UTM	North UTM	End East UTM	North UTM	Stream order:	Color: <input checked="" type="checkbox"/> Clear <input type="checkbox"/> Stained Turbidity: <input checked="" type="checkbox"/> Clear <input type="checkbox"/> Cloudy	
Amphibian/reptile species	# adults	# subadults	# larvae	# egg masses	Comments	Survey Method
RASI Calling? Y <input checked="" type="checkbox"/> N <input type="checkbox"/> Voucher? Y <input checked="" type="checkbox"/> N <input type="checkbox"/> #		1 ♂	1		2 subadults 1 juv. ♀ see below	Visual <input checked="" type="checkbox"/> Trapped Aural <input type="checkbox"/> Hand Collected Dip Net/Seine
Calling? Y N Voucher? Y N #						Visual <input type="checkbox"/> Trapped Aural <input type="checkbox"/> Hand Collected Dip Net/Seine
Calling? Y N Voucher? Y N #						Visual <input type="checkbox"/> Trapped Aural <input type="checkbox"/> Hand Collected Dip Net/Seine
Calling? Y N Voucher? Y N #						Visual <input type="checkbox"/> Trapped Aural <input type="checkbox"/> Hand Collected Dip Net/Seine
Calling? Y N Voucher? Y N #						Visual <input type="checkbox"/> Trapped Aural <input type="checkbox"/> Hand Collected Dip Net/Seine
Water Temp. (.5m from shore, 10cm deep): 23.2 edge @ 18:50, 24 C or F		Air Temp. (1m above water): 23.5 @ C or F				

amphibians: Sierra Nevada yellow-legged frog (RASI), Sierran treefrog (PSSI), CA newt (TATO), bullfrog (LICA), long-toed salamander (AMMA)
 reptiles: W. aquatic garter snake (THCO) W. terrestrial garter snake (THEL) common garter snake (THSI) W. pond turtle (CLMA)
 fish: rainbow trout (RT), golden trout (GT), cutthroat trout (CT), brown trout (BN), brook trout (BK), hybrids (GT x RT, CT x RT)

Photos:

KW 541: Pond 6 habitat
 RA took lots of photos of RASI 1

UTMs:

RASI 1: 0749216-4304268
 RASI 2: 0749214-4304251
 RASI 3: 0749239-4304240

Notes:

RASI 1: juv. ♂, 39mm, basking in water
 RASI 2: overwinter tad, ~ 65.71
 RASI 3: juv., 30mm

SNYLF Amphibian Data Sheet - 2009

Site ID: <i>Pond H</i>	Date: <i>08-05-10</i> (mmm-dd-yy)	Water type: Lake <input checked="" type="checkbox"/> Unmapped pond <input checked="" type="checkbox"/> Stream <input type="checkbox"/> Marsh <input type="checkbox"/> Spring seep <input type="checkbox"/> Perennial <input type="checkbox"/> Ephemeral <input type="checkbox"/>				
If not sampled, reason: stream widening frozen, dry, or not found part of another water body						
Lake Name: (from map)	Planning Watershed: (from "Lakes Checklist")	Location (use common language)				
County:	Elevation: m ft	East UTM: North UTM: (only for lakes w/o a site ID; obtain from GPS unit)				
Topographic Map (7.5'):	Weather: <input checked="" type="checkbox"/> Clear <input type="checkbox"/> Overcast <input type="checkbox"/> Rain <input type="checkbox"/> Snow	Wind: <input type="checkbox"/> Calm <input checked="" type="checkbox"/> Light <input type="checkbox"/> Strong				
	pH: _____	Max. lake depth (m): <i>2.0m</i>				
		Team members: <i>P. Aramayo, K. Chan, K. Wiseman, C. Scott</i>				
Amphibian observer(s): <i>Scott, Chan, Wiseman</i>	Survey start time: <i>1530</i> End time (hhmm): <i>1557</i>	Total survey duration: _____ (min)				
		Weather: <input checked="" type="checkbox"/> Clear <input type="checkbox"/> Overcast <input type="checkbox"/> Rain <input type="checkbox"/> Snow				
		Wind: <input type="checkbox"/> Calm <input checked="" type="checkbox"/> Light <input type="checkbox"/> Strong				
<i>Stream only:</i>	Start East UTM North UTM	End East UTM North UTM				
		Stream order: _____				
		Color: <input checked="" type="checkbox"/> Clear <input type="checkbox"/> Stained				
		Turbidity: <input checked="" type="checkbox"/> Clear <input type="checkbox"/> Cloudy				
Amphibian/reptile species	# adults	# subadults	# larvae	# egg masses	Comments	Survey Method
<i>RASI</i>	<i>1 ♀</i>	<i>1</i>	<i> </i>			<input checked="" type="checkbox"/> Visual <input type="checkbox"/> Trapped <input type="checkbox"/> Aural <input type="checkbox"/> Hand Collected <input checked="" type="checkbox"/> Dip Net/Seine
Calling? Y <input checked="" type="checkbox"/> N <input type="checkbox"/>						<input type="checkbox"/> Visual <input type="checkbox"/> Trapped <input type="checkbox"/> Aural <input type="checkbox"/> Hand Collected <input type="checkbox"/> Dip Net/Seine
Voucher? Y <input checked="" type="checkbox"/> N <input type="checkbox"/> # _____						<input type="checkbox"/> Visual <input type="checkbox"/> Trapped <input type="checkbox"/> Aural <input type="checkbox"/> Hand Collected <input type="checkbox"/> Dip Net/Seine
Calling? Y <input type="checkbox"/> N <input checked="" type="checkbox"/>						<input type="checkbox"/> Visual <input type="checkbox"/> Trapped <input type="checkbox"/> Aural <input type="checkbox"/> Hand Collected <input type="checkbox"/> Dip Net/Seine
Voucher? Y <input type="checkbox"/> N <input checked="" type="checkbox"/> # _____						<input type="checkbox"/> Visual <input type="checkbox"/> Trapped <input type="checkbox"/> Aural <input type="checkbox"/> Hand Collected <input type="checkbox"/> Dip Net/Seine
Calling? Y <input type="checkbox"/> N <input checked="" type="checkbox"/>						<input type="checkbox"/> Visual <input type="checkbox"/> Trapped <input type="checkbox"/> Aural <input type="checkbox"/> Hand Collected <input type="checkbox"/> Dip Net/Seine
Voucher? Y <input type="checkbox"/> N <input checked="" type="checkbox"/> # _____						<input type="checkbox"/> Visual <input type="checkbox"/> Trapped <input type="checkbox"/> Aural <input type="checkbox"/> Hand Collected <input type="checkbox"/> Dip Net/Seine
Water Temp. (.5m from shore, 10cm deep): <i>20.5°C @ 19.0m C or F</i>		Air Temp. (1m above water): <i>24°C @ 2m C or F</i>				

amphibians: Sierra Nevada yellow-legged frog (RASI), Sierran treefrog (PSSI), CA newt (TATO), bullfrog (LICA), long-toed salamander (AMMA)
 reptiles: W. aquatic garter snake (THCO) W. terrestrial garter snake (THEL) common garter snake (THSI) W. pond turtle (CLMA)
 fish: rainbow trout (RT), golden trout (GT), cutthroat trout (CT), brown trout (BN), brook trout (BK), hybrids (GT x RT, CT x RT)

Photos:

KW 546: Pond H habitat
IAC 75: RASI 2 Chinleat
FAC 76: RASI 2
KW 550-551: RASI 3

UTMs:
RASI 1: 0749201-4304203
RASI 2: 0749195-4304218
RASI 3+4: 0749172-4304251
RASI 5+6: 0749166-4304256

Notes:

RASI 1: overwinter tad, ~70mm, ~GS 41
RASI 2: ♀, 66mm / 29grams, basking on shore
RASI 3: overwinter tad, tiny backleg (GS ~39)
RASI 4: overwinter tad, GS ~40
RASI 5: JUV
RASI 6: overwinter tad, ~65mm

SNYLF Amphibian Data Sheet - 2009

Site ID: <i>Pond I</i>	Date: <i>08-04-10</i> (mmm-dd-yy)	Water type: Lake Unmapped pond Stream Marsh Spring seep Perennial Ephemeral	If not sampled, reason: stream widening frozen, dry, or not found part of another water body			
Lake Name: (from map)	Planning Watershed: (from "Lakes Checklist")	Location (use common language)				
County:	Elevation: m ft	East UTM:	North UTM: (only for lakes w/o a site ID; obtain from GPS unit)			
Topographic Map (7.5'):	Weather: Clear Overcast Rain Snow	Wind: Calm <u>Light</u> Strong	pH: _____ source:	Max. lake depth (m): <u>3.0</u>	Team members: <i>K. WISEMAN, C. SCOTT, I. CHAN, R. PRADHAYO</i>	
Amphibian observer(s): <i>K. WISEMAN, I. CHAN, C. SCOTT</i>	Survey start time: <u>1053</u> End time (hhmm): <u>1704</u>	Total survey duration: (min) <u>11</u>	Weather: Clear Overcast Rain Snow Wind: Calm <u>Light</u> Strong			
<i>Stream only:</i> Start East UTM North UTM	End East UTM North UTM	Stream order:	Color: Clear Stained Turbidity: Clear Cloudy			
Amphibian/reptile species	# adults	# subadults	# larvae	# egg masses	Comments	Survey Method
<i>RASI</i> Calling? Y <u>N</u> Voucher? Y <u>N</u> # _____	<i>1 (juvenile 08-05)</i> <i>[RASI 4]</i>	<i>111</i>			<i>3 TOTAL</i> <i>see below</i>	<u>Visual</u> Trapped Aural <u>Hand Collected</u> Dip Net/Seine
<i>THEL</i> Calling? Y <u>N</u> Voucher? Y <u>N</u> # _____	<i>1 (10cm SVL)</i> <i>no stream comments</i> <i>from 8-4 am</i>	<i>1</i>				<u>Visual</u> Trapped Aural <u>Hand Collected</u> Dip Net/Seine
<i>PSSI</i> Calling? Y <u>N</u> Voucher? Y <u>N</u> # _____			<i>~20</i>			<u>Visual</u> Trapped Aural Hand Collected Dip Net/Seine
Calling? Y N Voucher? Y N # _____						Visual Trapped Aural Hand Collected Dip Net/Seine
Calling? Y N Voucher? Y N # _____						Visual Trapped Aural Hand Collected Dip Net/Seine
Water Temp. (.5m from shore, 10cm deep): <u>20.5°C @ 20°C 10m</u> or F		Air Temp. (1m above water): <u>25°C</u> @ <u>1m</u> or F				

amphibians: Sierra Nevada yellow-legged frog (RASI), Sierran treefrog (PSSI), CA newt (TATO), bullfrog (LICA), long-toed salamander (AMMA)
 reptiles: W. aquatic garter snake (THCO) W. terrestrial garter snake (THEL) common garter snake (THSI) W. pond turtle (CLMA)
 fish: rainbow trout (RT), golden trout (GT), cutthroat trout (CT), brown trout (BN), brook trout (BK), hybrids (GT x RT, CT x RT)

Photos:

R.W. 485 - Pond I habitat
KW 428-441 - Adult THEL

UTMs:

RASI 1: 0749097-4304357
RASI 2: 0749107-4304402
RASI 3: 0749119-4304503
RASI 4: 0749119-4304375

Notes:

RASI 1: juv, ~35mm
RASI 2: juv, 30mm
RASI 3: juv, ~35mm
RASI 4: adult, ~40mm

SNYLF Amphibian Data Sheet - 2009

Site ID: <u>Pond J</u>	Date: <u>03-04-10</u> (mmm-dd-yy)	Water type: Lake <u>Unmapped pond</u> Stream Marsh Spring seep	Perennial Ephemeral			
If not sampled, reason: stream widening frozen, dry, or not found part of another water body						
Lake Name: (from map)	Planning Watershed: (from "Lakes Checklist")	Location (use common language)				
County:	Elevation: m ft	East UTM:	North UTM: (only for lakes w/o a site ID; obtain from GPS unit)			
Topographic Map (7.5'):	Weather: <u>Clear</u> Overcast Rain Snow	Wind: Calm <u>Light</u> Strong	pH: <u>—</u> source: Max. lake depth (m): <u>3.5m</u> Team members: <u>R. Wiseman, C. Scott</u>			
Amphibian observer(s): <u>R. Wiseman + C. Scott</u>	Survey start time: <u>1355-1500</u>	Total survey duration: (min) <u>2 hrs 15 min</u>	Weather: <u>Clear</u> Overcast Rain Snow Wind: Calm <u>Light</u> Strong			
End time (hhmm): <u>1520-1630</u>	Stream Start East UTM	North UTM	End East UTM North UTM			
Stream order:	Color: <u>Clear</u> Stained	Turbidity: <u>Clear</u> Cloudy				
Amphibian/reptile species	# adults	# subadults	# larvae	# egg masses	Comments	Survey Method
<u>RASI</u> Calling? Y <input checked="" type="checkbox"/> N Voucher? Y <input checked="" type="checkbox"/> #		<u>III</u> 1 = 6	<u>III (overwinter)</u> II = 8		See below 14 TOTAL (6 juv, 8 tad)	Visual Aural Dip Net/Seine Trapped Hand Collected
<u>PSSI</u> Calling? Y <input checked="" type="checkbox"/> N Voucher? Y <input checked="" type="checkbox"/> #			<u>III III 15</u> <u>III III III</u> <u>III III 20 = 70</u>		70 TOTAL tads	Visual Aural Dip Net/Seine Trapped Hand Collected
Calling? Y N Voucher? Y N #						Visual Aural Dip Net/Seine Trapped Hand Collected
Calling? Y N Voucher? Y N #						Visual Aural Dip Net/Seine Trapped Hand Collected
Calling? Y N Voucher? Y N #						Visual Aural Dip Net/Seine Trapped Hand Collected
Water Temp. (.5m from shore, 10cm deep): <u>10.5° @ 1m</u>		Air Temp. (1m above water): <u>24.0</u>				

amphibians: Sierra Nevada yellow-legged frog (RASI), Sierran treefrog (PSSI), CA newt (TATO), bullfrog (LICA), long-toed salamander (AMMA) (Sierran yellow-legged frog)
 reptiles: W. aquatic garter snake (THCO) W. terrestrial garter snake (THEL) common garter snake (THSI) W. pond turtle (CLMA) * fruit shrimp present in small pool
 fish: rainbow trout (RT), golden trout (GT), cutthroat trout (CT), brown trout (BN), brook trout (BK), hybrids (GT x RT, CT x RT) UTMs: 0748933-4304244 of NE arm of J
UTMs: 0749028-4204528 of NE pool

PHOTOS:
 KW465-66: RASI 2
 KW467: RASI 3
 KW468: Pond J hab.
 KW469: RASI tad near hab.
 KW478-81: RASI 8+9

UTMS:
 RASI 13: 0748952/4304279
 RASI 14: 0748933-4304268
 RASI 5: 0748965-4304329
 RASI 6: 0749042-4304355
 RASI 8-10: 0749073-4304355
 RASI 11: 0749058-4304328

NOTES:
 RASI 1-3: TADPOLES ~ 6.5 cm (hind legs only); grassy/pond edge
 RASI 4: same as 1-3
 RASI 5: same as 1-4; grassy shallows
 RASI 6-7: same as 1-5; grassy shallows & woody debris
 RASI 8-10: both ~ 3.5 cm subadults
 RASI 11: juv, 31mm → RASI 12 (juv, 30mm) + RASI 14 (tad, same as 6)

RASI UTMS WITH
 RASI 12-14: 0749053-4304310

SNYLF Amphibian Data Sheet - 2009

Site ID: <i>Pond K</i>	Date: <i>08-04-10</i> (mmm-dd-yy)	Water type: Lake <u>Unmapped pond</u> Stream Marsh Spring seep Perennial Ephemeral	If not sampled, reason: stream widening frozen, dry, or not found part of another water body			
Lake Name: (from map)	Planning Watershed: (from "Lakes Checklist")	Location (use common language)				
County:	Elevation: m ft	East UTM:	North UTM: (only for lakes w/o a site ID; obtain from GPS unit)			
Topographic Map (7.5'):	Weather: <u>Clear</u> Overcast Rain Snow	Wind: <u>Calm</u> Light Strong	pH: <u>—</u> source:	Max. lake depth (m): <u>0.4</u>	Team members: <i>R. Brannan, I. Chan, K. Wiseman, C. Scott</i>	
Amphibian observer(s): <i>I. Chan, K. Wiseman, C. Scott</i>	Survey start time: <i>1637</i>	Total survey duration: (min) <i>5</i>	Weather: <u>Clear</u> Overcast Rain Snow			
	End time (hhmm): <i>1642</i>	Wind: <u>Calm</u> Light Strong				
<i>Stream only:</i>	Start East UTM	North UTM	End East UTM	North UTM	Stream order: Color: <u>Clear</u> Stained Turbidity: <u>Clear</u> Cloudy	
Amphibian/reptile species	# adults	# subadults	# larvae	# egg masses	Comments	Survey Method
<i>PSSI</i>			<i>75</i>			<u>Visual</u> Trapped Aural Hand Collected <u>Dip Net/Seine</u>
Calling? Y <input checked="" type="checkbox"/> N						Visual Trapped Aural Hand Collected Dip Net/Seine
Voucher? Y <input checked="" type="checkbox"/> N #						Visual Trapped Aural Hand Collected Dip Net/Seine
Calling? Y N						Visual Trapped Aural Hand Collected Dip Net/Seine
Voucher? Y N #						Visual Trapped Aural Hand Collected Dip Net/Seine
Calling? Y N						Visual Trapped Aural Hand Collected Dip Net/Seine
Voucher? Y N #						Visual Trapped Aural Hand Collected Dip Net/Seine
Water Temp. (.5m from shore, 10cm deep): <i>25°C @ 0.4m @ 24°C or F</i>		Air Temp. (1m above water): <i>24° @ 1m C or F</i>				

amphibians: Sierra Nevada yellow-legged frog (RASI), Sierran treefrog (PSSI), CA newt (TATO), bullfrog (LICA), long-toed salamander (AMMA)
 reptiles: W. aquatic garter snake (THCO) W. terrestrial garter snake (THEL) common garter snake (THSI) W. pond turtle (CLMA)
 fish: rainbow trout (RT), golden trout (GT), cutthroat trout (CT), brown trout (BN), brook trout (BK), hybrids (GT x RT, CT x RT)

Photos:
 KW483: Pond K hab.

*Fairy shrimp present
 (Streptocephalus sealii)

SNYLF Amphibian Data Sheet - 2009

Site ID: <i>Pond L</i>	Date: <i>08-03-10</i> (mmm-dd-yy)	Water type: Lake <u>Unmapped pond</u> Stream Marsh Spring seep	Perennial Ephemeral			
If not sampled, reason: stream widening frozen, dry, or not found part of another water body						
Lake Name: (from map)	Planning Watershed: (from "Lakes Checklist")	Location (use common language)				
County:	Elevation: m ft	East UTM:	North UTM: (only for lakes w/o a site ID; obtain from GPS unit)			
Topographic Map (7.5):	Weather: <u>Clear</u> Overcast Rain Snow	Wind: Calm <u>Light</u> Strong	pH: <u> </u> source: Max. lake depth (m): <i>0.6</i> Team members: <i>R. Aramayo, I. Chan, C. Scott, K. Wiseman</i>			
Amphibian observer(s): <i>K. Wiseman, I. Chan, C. Scott</i>	Survey start time: <i>1709</i> End time (hhmm): <i>1726</i>	Total survey duration: (min) <i>17</i>	Weather: <u>Clear</u> Overcast Rain Snow Wind: Calm <u>Light</u> Strong			
<i>Stream</i> Start East UTM North UTM	End East UTM North UTM	Stream order:	Color: <u>Clear</u> Stained Turbidity: <u>Clear</u> Cloudy			
Amphibian/reptile species	# adults	# subadults	# larvae	# egg masses	Comments	Survey Method
<i>THEL</i> Calling? Y <input checked="" type="checkbox"/> N Voucher? Y <input checked="" type="checkbox"/> # <u> </u>	<i>1 (46cm SVL)</i>				<i>NO STOMACH CONTENTS</i>	<u>Visual</u> Trapped Aural <u>Hand Collected</u> <u>Dip Net/Seine</u>
<i>RASI</i> Calling? Y <input checked="" type="checkbox"/> N Voucher? Y <input checked="" type="checkbox"/> # <u> </u>	<i>1 ♀ 1 ♂</i>	<i>1</i>				<u>Visual</u> Trapped Aural <u>Hand Collected</u> <u>Dip Net/Seine</u>
<i>PSSI</i> Calling? Y <input checked="" type="checkbox"/> N Voucher? Y <input checked="" type="checkbox"/> # <u> </u>			<i>125</i>			<u>Visual</u> Trapped Aural <u>Hand Collected</u> <u>Dip Net/Seine</u>
Calling? Y N Voucher? Y N # <u> </u>						Visual Trapped Aural Hand Collected <u>Dip Net/Seine</u>
Calling? Y N Voucher? Y N # <u> </u>						Visual Trapped Aural Hand Collected <u>Dip Net/Seine</u>
Water Temp. (.5m from shore, 10cm deep): <i>22° @ edge @ 20cm @ 1m</i> C or F				Air Temp. (1m above water): <i>22.5 @ 1m</i> (C) or F		

amphibians: Sierra Nevada yellow-legged frog (RASI), Sierran treefrog (PSSI), CA newt (TATO), bullfrog (LICA), long-toed salamander (AMMA)
 reptiles: W. aquatic garter snake (THCO) W. terrestrial garter snake (THEL) common garter snake (THSI) W. pond turtle (CLMA)
 fish: rainbow trout (RT), golden trout (GT), cutthroat trout (CT), brown trout (BN), brook trout (BK), hybrids (GT x RT, CT x RT)

PHOTOS:

KW440-442: RASI 1
 KW443-4: RASI 2

UTMS:

RASI 1: 0749155 - 4304659
 RASI 2: 0749143 - 4304645
 RASI 3: 0749147 - 4304668

NOTES:

RASI 1: ♀, 49mm/NO WGT, BASKING
 RASI 2: ♂, 52mm/NW, Basking, half in H₂O
 RASI 3: juv, ~33mm, basking

SNYLF Amphibian Data Sheet - 2009

Site ID: <i>Pond M</i>	Date: <i>08-03-10</i> (mmm-dd-yy)	Water type: Lake Unmapped pond Stream Marsh Spring seep Perennial Ephemeral	If not sampled, reason: stream widening frozen, dry, or not found part of another water body			
Lake Name: (from map)	Planning Watershed: (from "Lakes Checklist")	Location (use common language)				
County:	Elevation: m ft	East UTM:	North UTM: (only for lakes w/o a site ID; obtain from GPS unit)			
Topographic Map (7.5'):	Weather: <u>Clear</u> Overcast Rain Snow	Wind: Calm Light Strong	pH: <u>—</u> source:	Max. lake depth (m): <u>0.6</u>		
Amphibian observer(s): <i>L. Chan, C. Scot, K. Wiseman</i>		Survey start time: <u>1556</u>	Total survey duration: (min) <u>15</u>	Weather: <u>Clear</u> Overcast Rain Snow		
		End time (hhmm): <u>1611</u>	Wind: <u>Calm</u> Light Strong			
<i>Stream only:</i>	Start East UTM North UTM	End East UTM North UTM	Stream order:	Color: Clear <u>Stained</u>		
				Turbidity: <u>Clear</u> Cloudy		
Amphibian/reptile species	# adults	# subadults	# larvae	# egg masses	Comments	Survey Method
<i>RASI</i>	<i>3 ♂</i>				<i>See below (5 TOTAL)</i>	<u>Visual</u> Trapped
Calling? Y <u>N</u>	<i>UNK</i>					<u>Aural</u> <u>Hand Collected</u>
Voucher? Y N #	<i>1 ♀ (captured 08-06)</i>					<u>Dip Net/Seine</u>
Calling? Y N						Visual Trapped
Voucher? Y N #						Aural Hand Collected
						Dip Net/Seine
Calling? Y N						Visual Trapped
Voucher? Y N #						Aural Hand Collected
						Dip Net/Seine
Calling? Y N						Visual Trapped
Voucher? Y N #						Aural Hand Collected
						Dip Net/Seine
Water Temp. (.5m from shore, 10cm deep): <u>22° @ edge @ +15.5° @ .5m</u> (C or F)		Air Temp. (1m above water): <u>28.5° @ 1.5m</u> (C or F)				

amphibians: Sierra Nevada yellow-legged frog (RASI), Sierran treefrog (PSSI), CA newt (TATO), bullfrog (LICA), long-toed salamander (AMMA)
 reptiles: W. aquatic garter snake (THCO) W. terrestrial garter snake (THEL) common garter snake (THSI) W. pond turtle (CLMA)
 fish: rainbow trout (RT), golden trout (GT), cutthroat trout (CT), brown trout (BN), brook trout (BK), hybrids (GT x RT, CT x RT)

Photos:

KW 419: Pond M RW 425-29: RASI 5
 KW 420: RASI 1
 KW 421: RASI 2
 KW 422-24: RASI 4

RASI 1: ♂ 46mm/13g, basking
 RASI 2: ♂, 48mm/11g, basking
 RASI 3: UNK, * 50mm, no weight, floating
 RASI 4: ♂ 51mm/17.5g, basking
 RASI 5: ♀, 70mm/32grams, basking

UTMs for RASI 1-3:
 0749088
 4304708

UTMs for RASI 4+5:
 0749093
 4304698

SNYLF Amphibian Data Sheet - 2009

Site ID: <i>Pond N</i>	Date: <i>08-05-10</i> (mmm-dd-yy)	Water type: Lake <u>Unmapped pond</u> Stream Marsh Spring seep	Perennial Ephemeral				
If not sampled, reason: stream widening frozen, dry, or not found part of another water body							
Lake Name: (from map)	Planning Watershed: (from "Lakes Checklist")	Location (use common language)					
County:	Elevation: m ft	East UTM:	North UTM: (only for lakes w/o a site ID; obtain from GPS unit)				
Topographic Map (7.5'):	Weather: <u>Clear</u> Overcast Rain Snow	Wind: <u>Calm</u> <u>Light</u> Strong	pH: <u>—</u> source: Max. lake depth (m): <u>0.6</u> Team members: <i>Chris Wiseman, Scott Aramayo</i>				
Amphibian observer(s): <i>C. Scott + K. Wiseman</i>	Survey start time: <i>1256</i> End time (hhmm): <i>1320</i>	Total survey duration: (min) <i>26</i>	Weather: <u>Clear</u> Overcast Rain Snow Wind: <u>Calm</u> <u>Light</u> Strong				
Stream only:	Start East UTM North UTM	End East UTM North UTM	Stream order: Color: <u>Clear</u> <u>Stained</u> Turbidity: <u>-Clear</u> Cloudy				
Amphibian/reptile species	# adults	# subadults	# larvae	# egg masses	Comments	Survey Method	
<i>RASI</i>	<i>1 ♀ 1 ♂</i>				<i>A TOTAL (ADULT) (2 ♂, 2 ♀) See Notes</i>	<u>Visual</u> Trapped <u>Aural</u> <u>Hand Collected</u> <u>Dip Net/Seine</u>	
Calling? Y N Voucher? Y N #						Visual Trapped Aural Hand Collected Dip Net/Seine	
Calling? Y N Voucher? Y N #						Visual Trapped Aural Hand Collected Dip Net/Seine	
Calling? Y N Voucher? Y N #						Visual Trapped Aural Hand Collected Dip Net/Seine	
Calling? Y N Voucher? Y N #						Visual Trapped Aural Hand Collected Dip Net/Seine	
Calling? Y N Voucher? Y N #						Visual Trapped Aural Hand Collected Dip Net/Seine	
Water Temp. (.5m from shore, 10cm deep): <i>20°C @ 19.5°C</i> or F		Air Temp. (1m above water): <i>21°C</i> @ (C) or F					

amphibians: Sierra Nevada yellow-legged frog (RASI), Sierran treefrog (PSSI), CA newt (TATO), bullfrog (LICA), long-toed salamander (AMMA)
 reptiles: W. aquatic garter snake (THCO) W. terrestrial garter snake (THEL) common garter snake (THSI) W. pond turtle (CLMA)
 fish: rainbow trout (RT), golden trout (GT), cutthroat trout (CT), brown trout (BN), brook trout (BK), hybrids (GT x RT, CT x RT)

Photos:

KW 512: Pond N lake
KW 513-517: RASI 1
KW 518-20: RASI 2
KW 521+2: RASI 1 underwater
KW 523-25: RASI 3
KW 526-28: RASI 4

UTMs

RASI #2: 0749123-4304524
RASI #4: 0749104-4304543
RASI #2

Notes

RASI 1: 58mm ♀, basking, 20.5 grams
RASI 2: ♂, 47mm, basking, 11.5 grams
RASI 3: ♀, 42mm / 7 grams, basking
RASI 4: ♂, 45mm / 10.5 grams, basking

SNYLF Amphibian Data Sheet - 2009

Site ID: <i>Pond 0</i>	Date: <i>08-05-10</i> (mmm-dd-yy)	Water type: Lake Unmapped pond Stream Marsh Spring seep	Perennial Ephemeral			
If not sampled, reason: stream widening frozen, dry, or not found part of another water body						
Lake Name: (from map)	Planning Watershed: (from "Lakes Checklist")	Location (use common language)				
County:	Elevation: m ft	East UTM:	North UTM: (only for lakes w/o a site ID; obtain from GPS unit)			
Topographic Map (7.5):	Weather: <u>Clear</u> Overcast Rain Snow	Wind: Calm <u>Light</u> Strong	pH: <u> </u> source: Max. lake depth (m): <i>0.25m</i>			
Amphibian observer(s): <i>C. Swift + R. Wiseman</i>	Survey start time: <i>1240</i> End time (hhmm): <i>1354</i>	Total survey duration: (min) <i>14</i>	Weather: <u>Clear</u> Overcast Rain Snow Wind: Calm <u>Light</u> Strong			
<i>Stream only:</i> Start East UTM North UTM	End East UTM North UTM	Stream order:	Color: Clear <u>Stained</u> Turbidity: <u>Clear</u> Cloudy			
Amphibian/reptile species	# adults	# subadults	# larvae	# egg masses	Comments	Survey Method
<i>RASI</i>	<i>1 ♀</i>					Visual Trapped Aural <u>Hand Collected</u> Dip Net/Seine
Calling? Y N						Visual Trapped Aural Hand Collected Dip Net/Seine
Voucher? Y N #						Visual Trapped Aural Hand Collected Dip Net/Seine
Calling? Y N						Visual Trapped Aural Hand Collected Dip Net/Seine
Voucher? Y N #						Visual Trapped Aural Hand Collected Dip Net/Seine
Calling? Y N						Visual Trapped Aural Hand Collected Dip Net/Seine
Voucher? Y N #						Visual Trapped Aural Hand Collected Dip Net/Seine
Water Temp. (.5m from shore, 10cm deep): <i>14.5°C @ 0.15m C or F</i>				Air Temp. (1m above water): <i>21°C @ C or F</i>		

amphibians: Sierra Nevada yellow-legged frog (RASI), Sierran treefrog (PSSI), CA newt (TATO), bullfrog (LICA), long-toed salamander (AMMA)

reptiles: W. aquatic garter snake (THCO) W. terrestrial garter snake (THEL) common garter snake (THSI) W. pond turtle (CLMA)

fish: rainbow trout (RT), golden trout (GT), cutthroat trout (CT), brown trout (BN), brook trout (BK), hybrids (GT x RT, CT x RT)

* Fairy shrimp present (S. seali)

Photos:

KW508: Site Photo: Pond 0

KW509-11: RASI

WTMS:

RASI 1: 0749135-4304523

Notes:

RASI 1: 43min, ♀, basking, ♀ green

SNYLF Amphibian Data Sheet - 2009

Site ID: <i>Pond P</i>	Date: <i>08-04-10</i> (mmm-dd-yy)	Water type: Lake <u>Unmapped pond</u> Stream Marsh Spring seep	Perennial <u>Ephemeral</u>			
If not sampled, reason: stream widening frozen, dry, or not found part of another water body						
Lake Name: (from map)	Planning Watershed: (from "Lakes Checklist")	Location (use common language)				
County:	Elevation: m ft	East UTM:	North UTM: (only for lakes w/o a site ID; obtain from GPS unit)			
Topographic Map (7.5):	Weather: <u>Clear</u> Overcast Rain Snow	Wind: <u>Calm</u> Light Strong	pH: <u>---</u> source: Max. lake depth (m): <u>0.3</u> Team members: <i>Chan, Scott, Wiseman + Aramayo</i>			
Amphibian observer(s): <i>I. Chan, K. Wiseman, C. Scott</i>	Survey start time: <i>1710</i>	Total survey duration: (min) <i>6</i>	Weather: <u>Clear</u> Overcast Rain Snow Wind: <u>Calm</u> Light Strong			
Stream only:	Start East UTM North UTM	End East UTM North UTM	Stream order: Color: Clear <u>Stained</u> Turbidity: Clear <u>Cloudy</u> <i>-pollen</i>			
Amphibian/reptile species	# adults	# subadults	# larvae	# egg masses	Comments	Survey Method
RASI Calling? Y <u>N</u> Voucher? Y <u>N</u> # _____		<i>111 = 6</i>			<i>6 total see below</i>	Visual <u>Trapped</u> Aural <u>Hand Collected</u> Dip Net/Seine
THEL Calling? Y <u>N</u> Voucher? Y <u>N</u> # _____	<i>1 (45mm SVL) NO STOM. CONTENTS</i>					Visual <u>Trapped</u> Aural <u>Hand Collected</u> Dip Net/Seine
Calling? Y <u>N</u> Voucher? Y <u>N</u> # _____						Visual <u>Trapped</u> Aural <u>Hand Collected</u> Dip Net/Seine
Calling? Y <u>N</u> Voucher? Y <u>N</u> # _____						Visual <u>Trapped</u> Aural <u>Hand Collected</u> Dip Net/Seine
Calling? Y <u>N</u> Voucher? Y <u>N</u> # _____						Visual <u>Trapped</u> Aural <u>Hand Collected</u> Dip Net/Seine
Water Temp. (.5m from shore, 10cm deep): <i>25.5°C edge @ max depth</i> C or F				Air Temp. (1m above water): <i>21.5°C</i> @ (C or F)		

amphibians: Sierra Nevada yellow-legged frog (RASI), Sierran treefrog (PSSI), CA newt (TATO), bullfrog (LICA), long-toed salamander (AMMA)
 reptiles: W. aquatic garter snake (THCO) W. terrestrial garter snake (THEL) common garter snake (THSI) W. pond turtle (CLMA)
 fish: rainbow trout (RT), golden trout (GT), cutthroat trout (CT), brown trout (BN), brook trout (BK), hybrids (GT x RT, CT x RT)

Photos

KW 487: Pond P habitat

UTMS:

RASI 1-3: 0749303-4304521

RASI 4-5: 0749303-4304533

RASI 6: 0749313-4304524

Notes:

RASI 1-3: juvs, all ~30-35mm

RASI 4-5: one ~35mm, one ~31mm, juvs.

RASI 6: juv, 32mm

SNYLF Amphibian Data Sheet - 2009

Site ID: <i>Pond Q</i>	Date: <i>08-04-10</i> (mmm-dd-yy)	Water type: Lake <u>Unmapped pond</u> Stream Marsh Spring seep Perennial Ephemeral				
If not sampled, reason: stream widening frozen, dry, or not found part of another water body						
Lake Name: (from map)		Planning Watershed: (from "Lakes Checklist")		Location (use common language)		
County:	Elevation: m ft	East UTM:	North UTM: (only for lakes w/o a site ID; obtain from GPS unit)			
Topographic Map (7.5'):	Weather: <u>Clear</u> Overcast Rain Snow	Wind: <u>Calm</u> Light Strong	pH: <u> </u> source:	Max. lake depth (m): <u>0.5</u>	Team members: <u>Anthony, Chan, Wiseman, Scott</u>	
Amphibian observer(s): <u>Chan, Wiseman, Scott</u>		Survey start time: <u>1644</u>	Total survey duration: (min) <u>4</u>	Weather: <u>Clear</u> Overcast Rain Snow		
		End time (hhmm): <u>1648</u>	Wind: <u>Calm</u> Light Strong			
Stream Start East UTM		North UTM	End East UTM	North UTM	Stream order: Color: Clear <u>Stained</u>	
only:					Turbidity: <u>Clear</u> Cloudy	
Amphibian/reptile species	# adults	# subadults	# larvae	# egg masses	Comments	Survey Method
<u>THEL</u> Calling? Y <u>N</u> Voucher? Y <u>N</u> # <u> </u>		<u>1</u>				<u>Visual</u> Trapped Aural <u>Hand Collected</u> Dip Net/Seine
<u>PSSI</u> Calling? Y <u>N</u> Voucher? Y <u>N</u> # <u> </u>			<u>60</u>			<u>Visual</u> Trapped Aural <u>Hand Collected</u> Dip Net/Seine
Calling? Y N Voucher? Y N # <u> </u>						Visual Trapped Aural Hand Collected Dip Net/Seine
Calling? Y N Voucher? Y N # <u> </u>						Visual Trapped Aural Hand Collected Dip Net/Seine
Calling? Y N Voucher? Y N # <u> </u>						Visual Trapped Aural Hand Collected Dip Net/Seine
Water Temp. (.5m from shore, 10cm deep): <u>24°C @ 10cm</u> (C) or F Air Temp. (1m above water): <u>26°C @ 1m</u> (C) or F						

amphibians: Sierra Nevada yellow-legged frog (RASI), Sierran treefrog (PSSI), CA newt (TATO), bullfrog (LICA), long-toed salamander (AMMA)
 reptiles: W. aquatic garter snake (THCO) W. terrestrial garter snake (THEL) common garter snake (THSI) W. pond turtle (CLMA)
 fish: rainbow trout (RT), golden trout (GT), cutthroat trout (CT), brown trout (BN), brook trout (BK), hybrids (GT x RT, CT x RT)

Photos:

RW484: Pond Q hub.

* Fairy shrimp present
(*Streptocephalus salinii*)

SNYLF Amphibian Data Sheet - 2009

Site ID: <i>Pond R</i>	Date: <i>08-05-10</i> (mmm-dd-yy)	Water type: Lake <input checked="" type="checkbox"/> Unmapped pond Stream Marsh Spring seep Perennial Ephemeral	If not sampled, reason: stream widening frozen, dry, or not found part of another water body			
Lake Name: (from map)	Planning Watershed: (from "Lakes Checklist")	Location (use common language)				
County:	Elevation: m ft	East UTM:	North UTM: (only for lakes w/o a site ID; obtain from GPS unit)			
Topographic Map (7.5')	Weather: <input checked="" type="checkbox"/> Clear Overcast Rain Snow	Wind: Calm <input checked="" type="checkbox"/> Light Strong	pH: _____ source:	Max. lake depth (m): <i>1.0m</i>	Team members: <i>I. Chan, K. W. ... R. ...</i>	
Amphibian observer(s): <i>same as team members</i>	Survey start time: <i>11:30</i>	Total survey duration: (min)	Weather: <input checked="" type="checkbox"/> Clear Overcast Rain Snow			
	End time (hhmm): <i>11:45</i>	Wind: Calm <input checked="" type="checkbox"/> Light Strong				
<i>Stream only:</i>	Start East UTM	North UTM	End East UTM	North UTM	Stream order: _____	
					Color: <input checked="" type="checkbox"/> Clear Stained	
					Turbidity: <input checked="" type="checkbox"/> Clear Cloudy	
Amphibian/reptile species	# adults	# subadults	# larvae	# egg masses	Comments	Survey Method
<i>PSS1</i>			<i>70 25 = 95</i>		<i>95 total</i>	Visual Trapped Aural Hand Collected Dip Net/Seine
Calling? Y N						Visual Trapped Aural Hand Collected Dip Net/Seine
Voucher? Y N #						
Calling? Y N						Visual Trapped Aural Hand Collected Dip Net/Seine
Voucher? Y N #						
Calling? Y N						Visual Trapped Aural Hand Collected Dip Net/Seine
Voucher? Y N #						
Calling? Y N						Visual Trapped Aural Hand Collected Dip Net/Seine
Voucher? Y N #						
Water Temp. (.5m from shore, 10cm deep): <i>24.0 @ 21.5</i>		Air Temp. (1m above water): <i>22.5</i>				

amphibians: Sierra Nevada yellow-legged frog (RASI), Sierran treefrog (PSSI), CA newt (TATO), bullfrog (LICA), long-toed salamander (AMMA)
 reptiles: W. aquatic garter snake (THCO) W. terrestrial garter snake (THEL) common garter snake (THSI) W. pond turtle (CLMA)
 fish: rainbow trout (RT), golden trout (GT), cutthroat trout (CT), brown trout (BN), brook trout (BK), hybrids (GT x RT, CT x RT)

Photos: *kw 557: Pond R. Habitat*

UTMs:

Notes:

SNYLF Amphibian Data Sheet - 2009

Site ID: <i>Pond 5</i>	Date: <i>08-05-10</i> (mmm-dd-yy)	Water type: Lake <input checked="" type="checkbox"/> <u>Unmapped pond</u> Stream Marsh Spring seep Perennial Ephemeral
If not sampled, reason: stream widening frozen, dry, or not found part of another water body		
Lake Name: (from map)	Planning Watershed: (from "Lakes Checklist")	Location (use common language)
County:	Elevation: m ft	East UTM: North UTM: (only for lakes w/o a site ID; obtain from GPS unit)
Topographic Map (7.5):	Weather: <input checked="" type="checkbox"/> Clear Overcast Rain Snow	Wind: Calm <input checked="" type="checkbox"/> Light Strong pH: _____ Max. lake depth (m): <i>1.5m</i> Team members: <i>R. Aronson, J. Chan, K. Wiseman, C. Smith</i>
Amphibian observer(s): <i>Sam & s team members</i>	Survey start time: <i>1047</i>	Total survey duration: (min) <i>6</i>
	End time (hhmm): <i>1053</i>	Weather: <input checked="" type="checkbox"/> Clear Overcast Rain Snow
		Wind: Calm <input checked="" type="checkbox"/> Light Strong
Stream only:	Start East UTM North UTM	End East UTM North UTM Stream order: Color: <input checked="" type="checkbox"/> Clear Stained Turbidity: <input checked="" type="checkbox"/> Clear Cloudy
Amphibian/reptile species	# adults	# subadults # larvae # egg masses
<i>PSSI</i>		<i>350</i>
Calling? Y <input checked="" type="checkbox"/> N		<i>350 total</i>
Voucher? Y <input checked="" type="checkbox"/> N # _____		<i>225</i>
<i>THEL</i>	<i>1 (45cm SVL)</i>	
Calling? Y <input checked="" type="checkbox"/> N	<i>NO STOM. CONTENTS</i>	
Voucher? Y <input checked="" type="checkbox"/> N # _____		
Calling? Y <input type="checkbox"/> N		
Voucher? Y <input type="checkbox"/> N # _____		
Calling? Y <input type="checkbox"/> N		
Voucher? Y <input type="checkbox"/> N # _____		
Water Temp. (.5m from shore, 10cm deep): <i>20.5 @ 1m @ 22.5 @ edge</i>	Air Temp. (1m above water): <i>20 @ (C) or F</i>	

amphibians: Sierra Nevada yellow-legged frog (RASI), Sierran treefrog (PSSI), CA newt (TATO), bullfrog (LICA), long-toed salamander (AMMA)
 reptiles: W. aquatic garter snake (THCO) W. terrestrial garter snake (THEL) common garter snake (THSI) W. pond turtle (CLMA)
 fish: rainbow trout (RT), golden trout (GT), cutthroat trout (CT), brown trout (BN), brook trout (BK), hybrids (GT x RT, CT x RT).

Photos:

KW 558: Pond 5 habitat

UTMs:

Notes:

SNYLF Amphibian Data Sheet - 2009

Site ID: <i>Pond T</i>	Date: <i>08-03-10</i> (mmm-dd-yy)	Water type: Lake <u>Unmapped pond</u> Stream Marsh Spring seep Perennial Ephemeral	If not sampled, reason: stream widening frozen, dry, or not found part of another water body			
Lake Name: (from map)	Planning Watershed: (from "Lakes Checklist")	Location (use common language)				
County:	Elevation: m ft	East UTM:	North UTM: (only for lakes w/o a site ID; obtain from GPS unit)			
Topographic Map (7.5'):	Weather: <u>Clear</u> Overcast Rain Snow	Wind: <u>Calm</u> Light Strong	pH: <u>—</u> source: .	Max. lake depth (m): <u>0.5</u>	Team members: <i>J. Chan, R. Aramayo, K. Wiseman, C. Scott</i>	
Amphibian observer(s): <i>same as team</i>	Survey start time: <i>1525</i> End time (hhmm): <i>1542</i>	Total survey duration: (min) <i>17</i>	Weather: <u>Clear</u> Overcast Rain Snow Wind: <u>Calm</u> <u>Light</u> Strong			
<i>Stream only:</i>	Start East UTM North UTM	End East UTM North UTM	Stream order:	Color: <u>Clear</u> <u>Stained</u>	Turbidity: <u>Clear</u> Cloudy	
Amphibian/reptile species	# adults	# subadults	# larvae	# egg masses	Comments	Survey Method
<i>PSSI</i> Calling? Y <input checked="" type="checkbox"/> Voucher? Y N # _____			<i>35</i>			<u>Visual</u> Trapped Aural <u>Hand Collected</u> <u>Dip Net/Seine</u>
<i>RASI</i> Calling? Y <input checked="" type="checkbox"/> Voucher? Y N # _____	<i>12</i>				<i>below</i>	<u>Visual</u> Trapped Aural <u>Hand Collected</u> <u>Dip Net/Seine</u>
Calling? Y N Voucher? Y N # _____						Visual Trapped Aural Hand Collected Dip Net/Seine
Calling? Y N Voucher? Y N # _____						Visual Trapped Aural Hand Collected Dip Net/Seine
Calling? Y N Voucher? Y N # _____						Visual Trapped Aural Hand Collected Dip Net/Seine
Water Temp. (.5m from shore, 10cm deep): <i>25</i>		@ <i>21</i> @ <i>25</i> C or F		Air Temp. (1m above water): <i>28</i> @ C or F		

amphibians: Sierra Nevada yellow-legged frog (RASI), Sierran treefrog (PSSI), CA newt (TATO), bullfrog (LICA), long-toed salamander (AMMA)
 reptiles: W. aquatic garter snake (THCO) W. terrestrial garter snake (THEL) common garter snake (THSI) W. pond turtle (CLMA)
 fish: rainbow trout (RT), golden trout (GT), cutthroat trout (CT), brown trout (BN), brook trout (BK), hybrids (GT x RT, CT x RT)

* Fairy shrimp present

photos: *KW412: fairy shrimp*
KW413: Pond T
KW414: 15-

RASI 1: ♀, 41mm / 7g, KW414-415, basking

SNYLF Amphibian Data Sheet - 2009

Site ID: Pond U	Date: 08-03-10 (mmm-dd-yy)	Water type: Lake Unmapped pond Stream Marsh Spring seep	Perennial Ephemeral			
If not sampled, reason: stream widening frozen, dry, or not found part of another water body						
Lake Name: (from map)	Planning Watershed: (from "Lakes Checklist")	Location (use common language)				
County:	Elevation: m ft	East UTM:	North UTM: (only for lakes w/o a site ID; obtain from GPS unit)			
Topographic Map (7.5):	Weather: <u>Clear</u> Overcast Rain Snow	Wind: <u>Calm</u> Light Strong	pH: — source: Max. lake depth (m): 0.8 Team members: I. Chan, C. Scott, K. Wiseman, R. Arroyo			
Amphibian observer(s): K. Wiseman, C. Scott, I. Chan	Survey start time: 1545 End time (hhmm): 1553	Total survey duration: (min) 7	Weather: <u>Clear</u> Overcast Rain Snow Wind: <u>Calm</u> Light Strong			
Stream only:	Start East UTM North UTM	End East UTM North UTM	Stream order: Color: Clear <u>Stained</u> Turbidity: Clear <u>Cloudy</u>			
Amphibian/reptile species	# adults	# subadults	# larvae	# egg masses	Comments	Survey Method
RASI Calling? Y <input checked="" type="checkbox"/> N Voucher? Y N #	1 ♀				see below	Visual Trapped Aural Hand Collected Dip Net/Seine
Calling? Y N Voucher? Y N #						Visual Trapped Aural Hand Collected Dip Net/Seine
Calling? Y N Voucher? Y N #						Visual Trapped Aural Hand Collected Dip Net/Seine
Calling? Y N Voucher? Y N #						Visual Trapped Aural Hand Collected Dip Net/Seine
Calling? Y N Voucher? Y N #						Visual Trapped Aural Hand Collected Dip Net/Seine
Water Temp. (.5m from shore, 10cm deep): 22 @ edge @ 17 @ .75m C or F		Air Temp. (1m above water): 27.5 @ (C) or F				

amphibians: Sierra Nevada yellow-legged frog (RASI), Sierran treefrog (PSSI), CA newt (TATO), bullfrog (LICA), long-toed salamander (AMMA)
 reptiles: W. aquatic garter snake (THCO) W. terrestrial garter snake (THEL) common garter snake (THSI) W. pond turtle (CLMA)
 fish: rainbow trout (RT), golden trout (GT), cutthroat trout (CT), brown trout (BN), brook trout (BK), hybrids (GT x RT, CT x RT)

Photos: KW 416: Pond U
 KW 417: RASI 1
 -418

RASI 1: ♀, 47mm/12g, basking, photos KW 417-418

SNYLF Amphibian Data Sheet - 2009

Site ID: <i>Pond V</i>	Date: <i>08-05-10</i> (mmm-dd-yy)	Water type: Lake <u>Unmapped pond</u> Stream Marsh Spring seep	Perennial Ephemeral			
Lake Name: (from map)		Planning Watershed: (from "Lakes Checklist")	Location (use common language)			
County:	Elevation: m ft	East UTM:	North UTM: (only for lakes w/o a site ID; obtain from GPS unit)			
Topographic Map (7.5'):	Weather: <u>Clear</u> Overcast Rain Snow	Wind: Calm <u>Light</u> Strong	pH: _____ source: _____			
Amphibian observer(s): <i>J. Chan, B. Satt, R. Wiseman, R. Aramayo</i>		Survey start time: <i>1600</i> End time (hhmm): <i>1615</i>	Total survey duration: (min) <i>15</i>			
Stream Start East UTM North UTM		End East UTM North UTM	Stream order: _____			
Color: <u>Clear</u> Stained		Turbidity: <u>Clear</u> Cloudy				
Amphibian/reptile species	# adults	# subadults	# larvae	# egg masses	Comments	Survey Method
Calling? Y N Voucher? Y N # _____						Visual Trapped Aural Hand Collected Dip Net/Seine
Calling? Y N Voucher? Y N # _____						Visual Trapped Aural Hand Collected Dip Net/Seine
Calling? Y N Voucher? Y N # _____						Visual Trapped Aural Hand Collected Dip Net/Seine
Calling? Y N Voucher? Y N # _____						Visual Trapped Aural Hand Collected Dip Net/Seine
Calling? Y N Voucher? Y N # _____						Visual Trapped Aural Hand Collected Dip Net/Seine
Water Temp. (.5m from shore, 10cm deep): <i>21° @ edge @ 18.5 @ 1.5m</i> C or F		Air Temp. (1m above water): <i>22° @ 1m @ above 4m</i> C or F				

amphibians: Sierra Nevada yellow-legged frog (RASl), Sierran treefrog (PSSI), CA newt (TATO), bullfrog (LICA), long-toed salamander (AMMA)
 reptiles: W. aquatic garter snake (THCO) W. terrestrial garter snake (THEL) common garter snake (THSI) W. pond turtle (CLMA)
 fish: rainbow trout (RT), golden trout (GT), cutthroat trout (CT), brown trout (BN), brook trout (BK), hybrids (GT x RT, CT x RT)

Photos:

RW 552: Pond V habitat

LITMs:

Notes:

SNYLF Amphibian Data Sheet - 2009

Site ID: <i>Pond W</i>	Date: <i>08-05-10</i> (mmm-dd-yy)	Water type: Lake Unmapped pond Stream Marsh Spring seep	Perennial Ephemeral			
Lake Name: (from map)		Planning Watershed: (from "Lakes Checklist")	Location (use common language)			
County:	Elevation: m ft	East UTM:	North UTM: (only for lakes w/o a site ID; obtain from GPS unit)			
Topographic Map (7.5'):	Weather: Clear Overcast Rain Snow	Wind: Calm Light Strong	pH: _____ source: _____			
Amphibian observer(s): <i>Chae Wiseman, Sette Aramayo</i>		Survey start time: <i>1415</i>	Total survey duration: _____			
End time (hhmm): <i>1628</i>		Weather: Clear Overcast Rain Snow	Wind: Calm Light Strong			
<i>Stream only:</i>	Start East UTM	North UTM	End East UTM North UTM			
Stream order:	Color: Clear Stained	Turbidity: Clear Cloudy				
Amphibian/reptile species	# adults	# subadults	# larvae	# egg masses	Comments	Survey Method
<i>PSSI</i>			<i>35 75 = 110</i>		<i>110 TOTAL TADS</i>	Visual Aural Dip Net/Seine
<i>RASI</i>		<i>1</i>			<i>1 juv</i>	Visual Aural Dip Net/Seine
<i>THEL</i>	<i>1 (42mm SVL)</i>	<i>1 (37 SVL)</i>			<i>2 (1 adult / 1 juv)</i>	Visual Aural Dip Net/Seine
Calling? Y N						Visual Aural Dip Net/Seine
Voucher? Y N #						Visual Aural Dip Net/Seine
Water Temp. (.5m from shore, 10cm deep): <i>24.9 @ 20.5m</i>	Air Temp. (1m above water): <i>21.5 @</i>					

amphibians: Sierra Nevada yellow-legged frog (RASI), Sierran treefrog (PSSI), CA newt (TATO), bullfrog (LICA), long-toed salamander (AMMA)
 reptiles: W. aquatic garter snake (THCO) W. terrestrial garter snake (THEL) common garter snake (THSI) W. pond turtle (CLMA)
 fish: rainbow trout (RT), golden trout (GT), cutthroat trout (CT), brown trout (BN), brook trout (BK), hybrids (GT x RT, CT x RT)

Photos:
 KW553: Pond W habitat
 KW554: RASI 1

UTMS:
 RASI 1: 0749114-4304294
 THEL2: 0749100-4304300

Notes:
 RASI 1: ♂, 43mm, basking

SNYLF Amphibian Data Sheet - 2009

Site ID: <i>Pond X</i>	Date: <i>08-05-10</i> (mmm-dd-yy)	Water type: Lake <input checked="" type="checkbox"/> Unmapped pond Stream Marsh Spring seep Perennial Ephemeral	If not sampled, reason: stream widening frozen, dry, or not found part of another water body			
Lake Name: (from map)	Planning Watershed: (from "Lakes Checklist")	Location (use common language)				
County:	Elevation: m ft	East UTM:	North UTM: (only for lakes w/o a site ID; obtain from GPS unit)			
Topographic Map (7.5')	Weather: <input checked="" type="checkbox"/> Clear <input type="checkbox"/> Overcast <input type="checkbox"/> Rain <input type="checkbox"/> Snow	Wind: Calm <input checked="" type="checkbox"/> Light <input type="checkbox"/> Strong	pH: _____ source: _____	Max. lake depth (m): <i>1.5</i>	Team members: <i>R. Aramayo, J. Chan, K. Wiseman, C. Scott</i>	
Amphibian observer(s): <i>same as team members</i>	Survey start time: <i>1633</i> End time (hhmm): <i>1638</i>	Total survey duration: (min) <i>5</i>	Weather: <input checked="" type="checkbox"/> Clear <input type="checkbox"/> Overcast <input type="checkbox"/> Rain <input type="checkbox"/> Snow Wind: Calm <input checked="" type="checkbox"/> Light <input type="checkbox"/> Strong			
Stream Start East UTM	North UTM	End East UTM	North UTM	Stream order:	Color: <input checked="" type="checkbox"/> Clear <input type="checkbox"/> Stained Turbidity: Clear <input checked="" type="checkbox"/> Cloudy <i>yellow</i>	
Amphibian/reptile species	# adults	# subadults	# larvae	# egg masses	Comments	Survey Method
<i>RASI</i> Calling? Y N Voucher? Y N # _____	<i>1♀</i>				<i>See notes</i>	Visual Trapped Aural Hand Collected Dip Net/Seine
Calling? Y N Voucher? Y N # _____						Visual Trapped Aural Hand Collected Dip Net/Seine
Calling? Y N Voucher? Y N # _____						Visual Trapped Aural Hand Collected Dip Net/Seine
Calling? Y N Voucher? Y N # _____						Visual Trapped Aural Hand Collected Dip Net/Seine
Calling? Y N Voucher? Y N # _____						Visual Trapped Aural Hand Collected Dip Net/Seine
Water Temp. (.5m from shore, 10cm deep): <i>21.0 @ 1.0m @ 19.5 @ 1.25m</i> C or F		Air Temp. (1m above water): <i>22.5 @ 1.0m above water</i> C or F				

amphibians: Sierra Nevada yellow-legged frog (RASI), Sierran treefrog (PSSI), CA newt (TATO), bullfrog (LICA), long-toed salamander (AMMA)
 reptiles: W. aquatic garter snake (THCO) W. terrestrial garter snake (THEL) common garter snake (THSI) W. pond turtle (CLMA)
 fish: rainbow trout (RT), golden trout (GT), cutthroat trout (CT), brown trout (BN), brook trout (BK), hybrids (GT x RT, CT x RT)

Photos:
 RW555: Pond & habitat
 RA photos of RASI 1

UTMS:
 RASI 1: 0749048-4304236

Notes:
 RASI 1: ♀, 4mm / 12mm, base King