

APPENDIX B

Monitoring Photographs—September 23, 2002 (from EIP Associates, 2002)

Caples Creek Site 1



Across Creek



Looking Downstream

El Dorado Irrigation District
FERC Project # 184
El Dorado County, CA



2002 Riparian Recruitment
Monitoring Study
Photos taken 9/23/02

Caples Creek Site 1



Looking Upstream

El Dorado Irrigation District
FERC Project # 184
El Dorado County, CA



2002 Riparian Recruitment
Monitoring Study
Photo taken 9/23/02

Caples Creek Site 2



Across Creek

El Dorado Irrigation District
FERC Project # 184
El Dorado County, CA



2002 Riparian Recruitment
Monitoring Study
Photo taken 9/23/02

Caples Creek Site 2



Looking Downstream

El Dorado Irrigation District
FERC Project # 184
El Dorado County, CA



2002 Riparian Recruitment
Monitoring Study
Photo taken 9/23/02

Caples Creek Site 2



Looking Upstream

El Dorado Irrigation District
FERC Project # 184
El Dorado County, CA



2002 Riparian Recruitment
Monitoring Study
Photo taken 9/23/02

Caples Creek Site 3



Across Creek

El Dorado Irrigation District
FERC Project # 184
El Dorado County, CA



2002 Riparian Recruitment
Monitoring Study
Photo taken 9/23/02

Caples Creek Site 3



Looking Downstream



Looking Upstream

El Dorado Irrigation District
FERC Project # 184
El Dorado County, CA



2002 Riparian Recruitment
Monitoring Study
Photos taken 9/23/02

Caples Creek Site 3



Looking Upstream

El Dorado Irrigation District
FERC Project # 184
El Dorado County, CA



2002 Riparian Recruitment
Monitoring Study
Photo taken 9/23/02

Caples Creek Site 4



Across Creek



Looking Downstream

El Dorado Irrigation District
FERC Project # 184
El Dorado County, CA



2002 Riparian Recruitment
Monitoring Study
Photos taken 9/23/02

Caples Creek Site 4



Looking Downstream

El Dorado Irrigation District
FERC Project # 184
El Dorado County, CA



2002 Riparian Recruitment
Monitoring Study

Caples Creek Site 5



Looking Across/Upstream

El Dorado Irrigation District
FERC Project # 184
El Dorado County, CA



2002 Riparian Recruitment
Monitoring Study
Photo taken 9/23/02

Caples Creek Site 6



Across Creek



Looking Downstream

El Dorado Irrigation District
FERC Project # 184
El Dorado County, CA



2002 Riparian Recruitment
Monitoring Study
Photos taken 9/23/02

Caples Creek Site 6



Looking Upstream

El Dorado Irrigation District
FERC Project # 184
El Dorado County, CA



2002 Riparian Recruitment
Monitoring Study
Photo taken 9/23/02

Caples Creek Site 7



Across Creek



Looking Downstream

El Dorado Irrigation District
FERC Project # 184
El Dorado County, CA



2002 Riparian Recruitment
Monitoring Study
Photos taken 9/23/02

Caples Creek Site 7



Looking Upstream



Looking Upstream

El Dorado Irrigation District
FERC Project # 184
El Dorado County, CA



2002 Riparian Recruitment
Monitoring Study
Photos taken 9/23/02

Caples Creek Site 8



Across Creek



Across Creek

El Dorado Irrigation District
FERC Project # 184
El Dorado County, CA



2002 Riparian Recruitment
Monitoring Study
Photos taken 9/23/02

Caples Creek Site 8



Across Creek



Looking Downstream

El Dorado Irrigation District
FERC Project # 184
El Dorado County, CA



2002 Riparian Recruitment
Monitoring Study
Photos taken 9/23/02

Caples Creek Site 8



Looking Upstream

El Dorado Irrigation District
FERC Project # 184
El Dorado County, CA



2002 Riparian Recruitment
Monitoring Study
Photos taken 9/23/02

Caples Creek Site 9



Across Creek



Across Creek

El Dorado Irrigation District
FERC Project # 184
El Dorado County, CA



2002 Riparian Recruitment
Monitoring Study
Photos taken 9/23/02

Caples Creek Site 9



Looking Downstream



Looking Upstream

El Dorado Irrigation District
FERC Project # 184
El Dorado County, CA



2002 Riparian Recruitment
Monitoring Study
Photos taken 9/23/02

Caples Creek Site 9



Looking Downstream

El Dorado Irrigation District
FERC Project # 184
El Dorado County, CA



2002 Riparian Recruitment
Monitoring Study
Photo taken 9/23/02

Caples Creek Site 10



Across Creek

El Dorado Irrigation District
FERC Project # 184
El Dorado County, CA



2002 Riparian Recruitment
Monitoring Study
Photo taken 9/23/02

Caples Creek Site 10



Looking Downstream



Looking Upstream

El Dorado Irrigation District
FERC Project # 184
El Dorado County, CA



2002 Riparian Recruitment
Monitoring Study
Photos taken 9/23/02

Caples Creek Site 11



Looking Upstream



Across Creek

El Dorado Irrigation District
FERC Project # 184
El Dorado County, CA



2002 Riparian Recruitment
Monitoring Study
Photos taken 9/23/02

Caples Creek Site 11



Looking Downstream



Looking Upstream

El Dorado Irrigation District
FERC Project # 184
El Dorado County, CA



2002 Riparian Recruitment
Monitoring Study
Photos taken 9/23/02

Caples Creek Site 12



Across Creek

El Dorado Irrigation District
FERC Project # 184
El Dorado County, CA



2002 Riparian Recruitment
Monitoring Study
Photo taken 9/23/02

Caples Creek Site 12



Looking Downstream



Looking Upstream

El Dorado Irrigation District
FERC Project # 184
El Dorado County, CA



2002 Riparian Recruitment
Monitoring Study
Photos taken 9/23/02

Caples Creek Site 12



Looking Upstream

El Dorado Irrigation District
FERC Project # 184
El Dorado County, CA



2002 Riparian Recruitment
Monitoring Study
Photo taken 9/23/02

Caples Creek Site 13



Across Creek

El Dorado Irrigation District
FERC Project # 184
El Dorado County, CA



2002 Riparian Recruitment
Monitoring Study
Photo taken 9/23/02

Caples Creek Site 13



Across Creek



Looking Downstream

El Dorado Irrigation District
FERC Project # 184
El Dorado County, CA



2002 Riparian Recruitment
Monitoring Study
Photos taken 9/23/02

Caples Creek Site 13



Looking Upstream

El Dorado Irrigation District
FERC Project # 184
El Dorado County, CA



2002 Riparian Recruitment
Monitoring Study
Photo taken 9/23/02

Caples Creek Site 14



Across Creek

El Dorado Irrigation District
FERC Project # 184
El Dorado County, CA



2002 Riparian Recruitment
Monitoring Study
Photos taken 9/23/02

Caples Creek Site 14



Looking Downstream



Looking Downstream

El Dorado Irrigation District
FERC Project # 184
El Dorado County, CA



2002 Riparian Recruitment
Monitoring Study
Photos taken 9/23/02

Caples Creek Site 14



Looking Upstream



Looking Upstream

El Dorado Irrigation District
FERC Project # 184
El Dorado County, CA



2002 Riparian Recruitment
Monitoring Study
Photos taken 9/23/02

Kirkwood Creek Site 15/16



Across Creek

El Dorado Irrigation District
FERC Project # 184
El Dorado County, CA



2002 Riparian Recruitment
Monitoring Study
Photo taken 9/23/02



Looking Downstream



Looking Upstream

El Dorado Irrigation District
FERC Project # 184
El Dorado County, CA



2002 Riparian Recruitment
Monitoring Study
Photos taken 9/23/02

Kirkwood Creek Site 17



Across Creek

El Dorado Irrigation District
FERC Project # 184
El Dorado County, CA



2002 Riparian Recruitment
Monitoring Study
Photo taken 9/23/02

Kirkwood Creek Site 17



Looking Downstream



Looking Downstream

El Dorado Irrigation District
FERC Project # 184
El Dorado County, CA



2002 Riparian Recruitment
Monitoring Study
Photos taken 9/23/02

Kirkwood Creek Site 17



Looking Upstream

El Dorado Irrigation District
FERC Project # 184
El Dorado County, CA



2002 Riparian Recruitment
Monitoring Study
Photo taken 9/23/02

Kirkwood Creek Site 17A



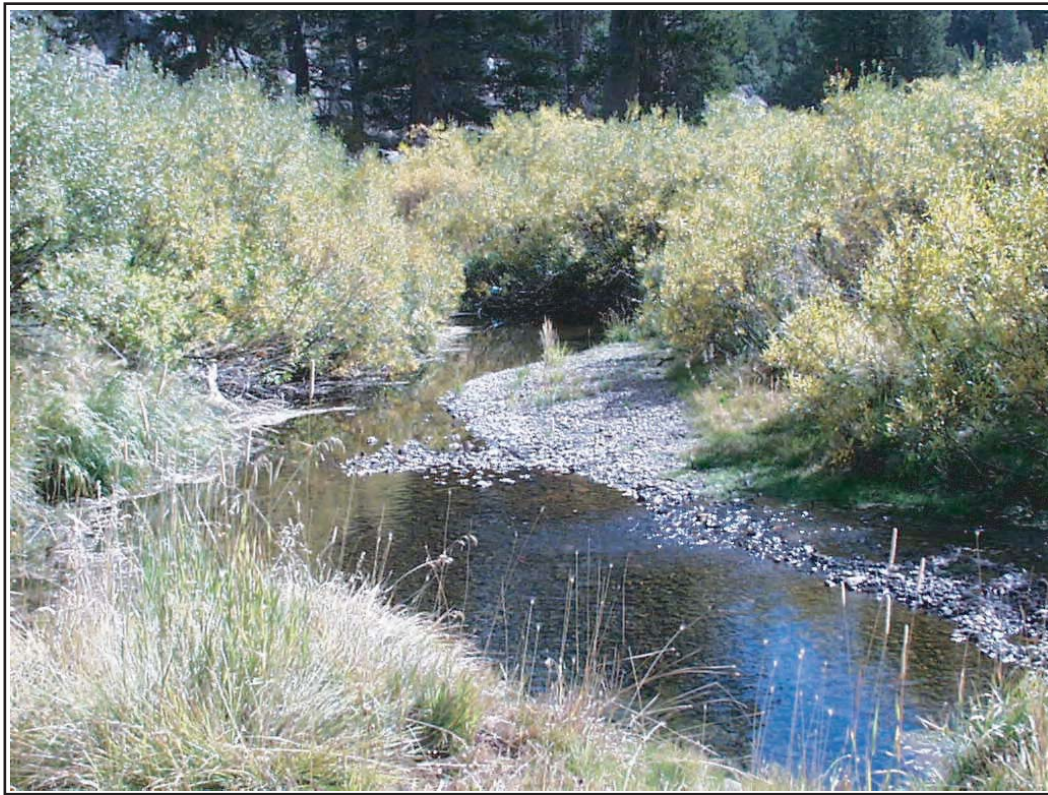
Across Creek

El Dorado Irrigation District
FERC Project # 184
El Dorado County, CA



2002 Riparian Recruitment
Monitoring Study
Photo taken 9/23/02

Kirkwood Creek Site 17A



Looking Downstream



Looking Upstream

El Dorado Irrigation District
FERC Project # 184
El Dorado County, CA



2002 Riparian Recruitment
Monitoring Study
Photos taken 9/23/02

Kirkwood Creek Site 18



Across Creek

El Dorado Irrigation District
FERC Project # 184
El Dorado County, CA



2002 Riparian Recruitment
Monitoring Study
Photo taken 9/23/02

Kirkwood Creek Site 18



Looking Downstream



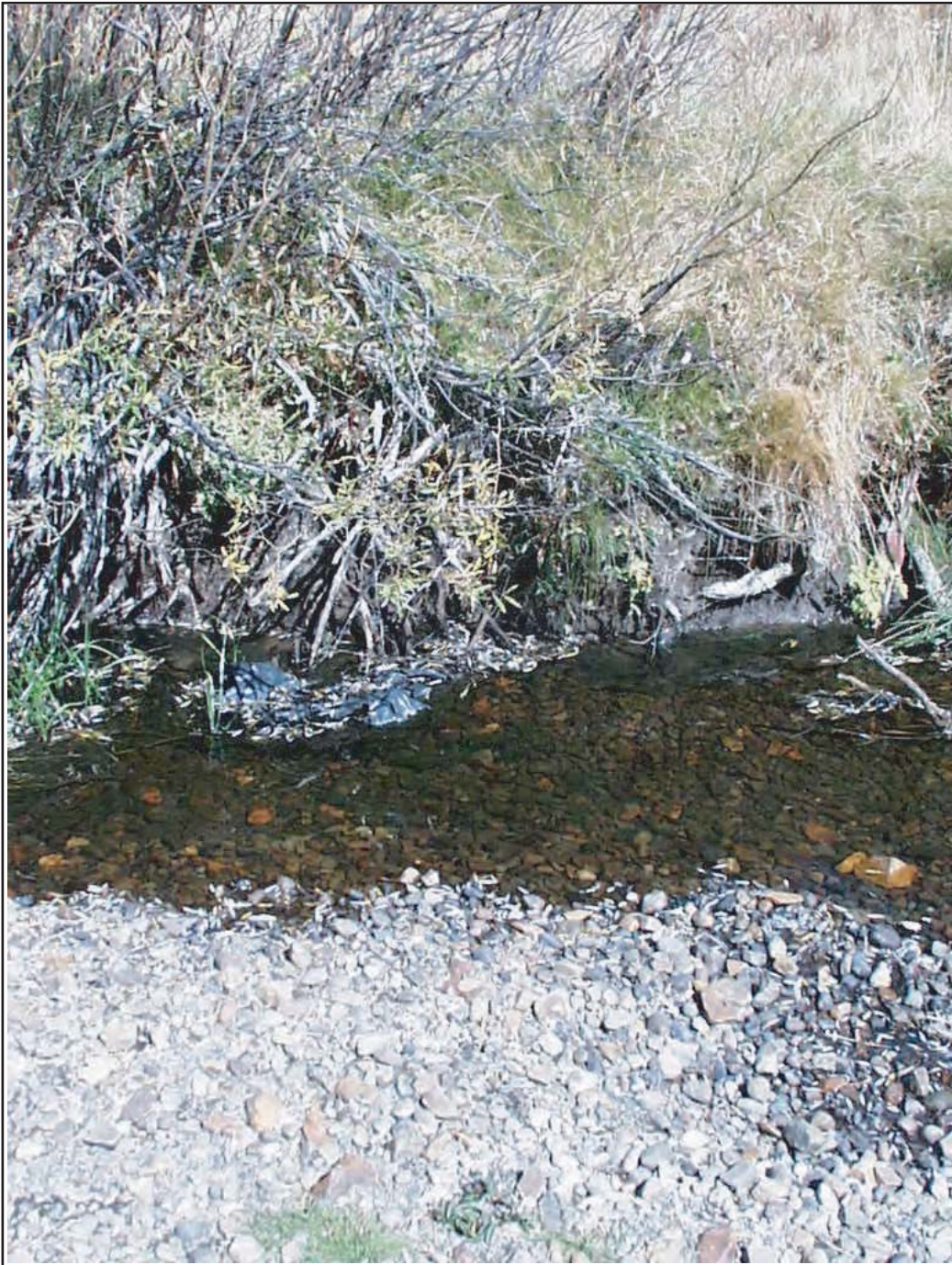
Looking Upstream

El Dorado Irrigation District
FERC Project # 184
El Dorado County, CA



2002 Riparian Recruitment
Monitoring Study
Photos taken 9/23/02

Kirkwood Creek Site 19



Across Creek

El Dorado Irrigation District
FERC Project # 184
El Dorado County, CA



2002 Riparian Recruitment
Monitoring Study
Photo taken 9/23/02

Kirkwood Creek Site 19



Looking Downstream



Looking Upstream

El Dorado Irrigation District
FERC Project # 184
El Dorado County, CA



2002 Riparian Recruitment
Monitoring Study
Photos taken 9/23/02

Kirkwood Creek Site 20



Across Creek

El Dorado Irrigation District
FERC Project # 184
El Dorado County, CA



2002 Riparian Recruitment
Monitoring Study
Photo taken 9/23/02

Kirkwood Creek Site 20



Looking Downstream



Looking Upstream

El Dorado Irrigation District
FERC Project # 184
El Dorado County, CA



2002 Riparian Recruitment
Monitoring Study
Photos taken 9/23/02

Kirkwood Creek Site 21



Across Creek

El Dorado Irrigation District
FERC Project # 184
El Dorado County, CA



2002 Riparian Recruitment
Monitoring Study
Photo taken 9/23/02

Kirkwood Creek 21



Looking Downstream



Looking Upstream

El Dorado Irrigation District
FERC Project # 184
El Dorado County, CA



2002 Riparian Recruitment
Monitoring Study
Photos taken 9/23/02

Kirkwood Creek Site 22



Across Creek

El Dorado Irrigation District
FERC Project # 184
El Dorado County, CA



2002 Riparian Recruitment
Monitoring Study
Photo taken 9/23/02

Kirkwood Creek Site 22



Looking Downstream



Looking Upstream

El Dorado Irrigation District
FERC Project # 184
El Dorado County, CA



2002 Riparian Recruitment
Monitoring Study
Photos taken 9/23/02



Across Creek near Hwy 88

El Dorado Irrigation District
FERC Project # 184
El Dorado County, CA



2002 Riparian Recruitment
Monitoring Study
Photo taken 9/23/02



Looking Downstream



Looking Upstream

El Dorado Irrigation District
FERC Project # 184
El Dorado County, CA



2002 Riparian Recruitment
Monitoring Study
Photos taken 9/23/02