



Planning and Resource Management for Our Communities and the Environment

16 September 2002

Scott E. Shewbridge, Ph.D., P.E., G.E.
Senior Engineer - Hydroelectric
Eldorado Irrigation District
2890 Mosquito Road
Placerville, California 95667

Richard Floch
Richard Floch and Associates
P.O. Box P.O. Box 285
Rescue, California 95672

Subject: **Preliminary Draft**
Technical Memorandum Number 13 –2001/2002 willow flycatcher surveys

Dear Dr. Shewbridge and Mr. Floch:

As part of the relicensing of the El Dorado Irrigation District FERC Project #184 willow flycatcher surveys were conducted in several meadow habitats in the vicinity of Silver Lake and Caples Lake, in the Eldorado National Forest. No willow flycatchers were detected at any of the sites during the survey. The primary preparers of this report are listed below:

KDH Biological Resource Consultation
Dennis Hood
Katie Hood

Should you have any questions or wish to discuss this report please contact me.

Sincerely,

A handwritten signature in black ink that reads 'Roy Leidy' in a cursive script.

Roy Leidy
Principal
Director, Fisheries and Aquatic Sciences

Attachment

EL DORADO IRRIGATION DISTRICT FEDERAL ENERGY REGULATORY COMMISSION PROJECT NUMBER 184

2001 / 2002 WILLOW FLYCATCHER SURVEYS

Summary

As part of the relicensing of the El Dorado Irrigation District FERC Project #184 willow flycatcher surveys were conducted in several meadow habitats in the vicinity of Silver Lake and Caples Lake, in the Eldorado National Forest. Four distinct patches of potential willow flycatcher habitat were identified and mapped by USFS personnel prior to the beginning of the surveys. Two visits were conducted at each site during each survey year. No willow flycatchers were detected at any of the sites during either year of the survey.

September 12, 2002

Mr. Roy Leidy
EIP Associates
1200 Second Street, Suite 200
Sacramento, California 95814

RE: EID NO. 184 FERC RELICENSING – FINAL SUMMARY REPORT

This report summarizes the willow flycatcher survey results from 2001 and 2002 for the El Dorado Irrigation District (EID) no. 184 FERC Relicensing Project (EIP Project #10540-01).

Willow Flycatcher Surveys

In early 2000, four distinct patches of potential willow flycatcher habitat in the vicinity of Silver Lake and Caples Lake were identified and mapped by USFS personnel. During the summers of 2001 and 2002, survey visits were conducted at these four sites in accordance with the United States Forest Service (USFS) *A Willow Flycatcher Survey Protocol for California, June 6, 2000*. Survey points were established every 50 m and the “fitz-bew” song was broadcast from each point (see attached maps). Two visits were conducted at each site during each survey year. No willow flycatchers were detected at any of the four sites during 2001 or 2002. Site-specific results are presented below and summarized in Table 1. As indicated on page 3 of the survey protocol, survey data “does NOT provide guidance on the interpretation of results beyond the year in which surveys are completed.” Therefore, these data indicate the absence of willow flycatchers within the EID no. 184 FERC Relicensing Project study area for 2001 and 2002 only.

Caples Maintenance Station

In 2001 and 2002, two surveys for willow flycatchers were conducted at the unnamed meadow west of the Cal Trans Caples Lake Maintenance station at approximately 7900 feet in elevation (Section 18, Township 10N, Range 18E). Eighteen survey points were established (Map #1).

A two-year survey protocol is complete for this site, with willow flycatchers absent during 2001 and 2002.

Caples Creek

In 2001 and 2002, two surveys for willow flycatchers were conducted at the unnamed meadow north of highway 88 and the Kirkwood Inn at the confluence of Caples Creek and Kirkwood Creek at approximately 7600 feet in elevation (Sections 15 & 22, Township 10N, Range 17E). Twenty-three survey points were established (Map #2).

A two-year survey protocol is complete for this site, with willow flycatchers absent during 2001 and 2002.

Plasses Meadow

In 2001 and 2002, two surveys for willow flycatchers were conducted at Plasses meadow along the south shore of Silver Lake at approximately 7300 feet in elevation (Section 8, Township 9N, Range 17E). Fifteen survey points were established (Map #3).

A two-year survey protocol is complete for this site, with willow flycatchers absent during 2001 and 2002.

Kirkwood Inn

In 2001 and 2002, two surveys for willow flycatchers were conducted at the unnamed meadow directly east of Kirkwood Inn and north of Highway 88 along Kirkwood Creek at approximately 7700 feet in elevation (Section 22, Township 10N, Range 17E). Five survey points were established (Map #4).

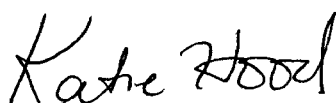
A two-year survey protocol is complete for this site, with willow flycatchers absent during 2001 and 2002.

Table 1. Summary of willow flycatcher survey results for FERC 184 reservoirs, 2001.

Site Name	Visit #	Date	Results
Caples Maintenance Station	1	6/25/01	No willow flycatchers detected – bald eagle observed
	2	7/10/01	No willow flycatchers detected
	3	6/21/02	No willow flycatchers detected
	4	7/20/02	No willow flycatchers detected
Caples Creek	1	6/19/01	No willow flycatchers detected
	2	7/09/01	No willow flycatchers detected
	3	6/16/02	No willow flycatchers detected
	4	7/21/02	No willow flycatchers detected
Plasses Meadow	1	6/13/01	No willow flycatchers detected
	2	6/19/01	No willow flycatchers detected
	3	6/15/02	No willow flycatchers detected
	4	7/20/02	No willow flycatchers detected
Kirkwood Inn	1	6/15/01	No willow flycatchers detected
	2	7/09/01	No willow flycatchers detected
	3	6/15/02	No willow flycatchers detected
	4	7/21/02	No willow flycatchers detected

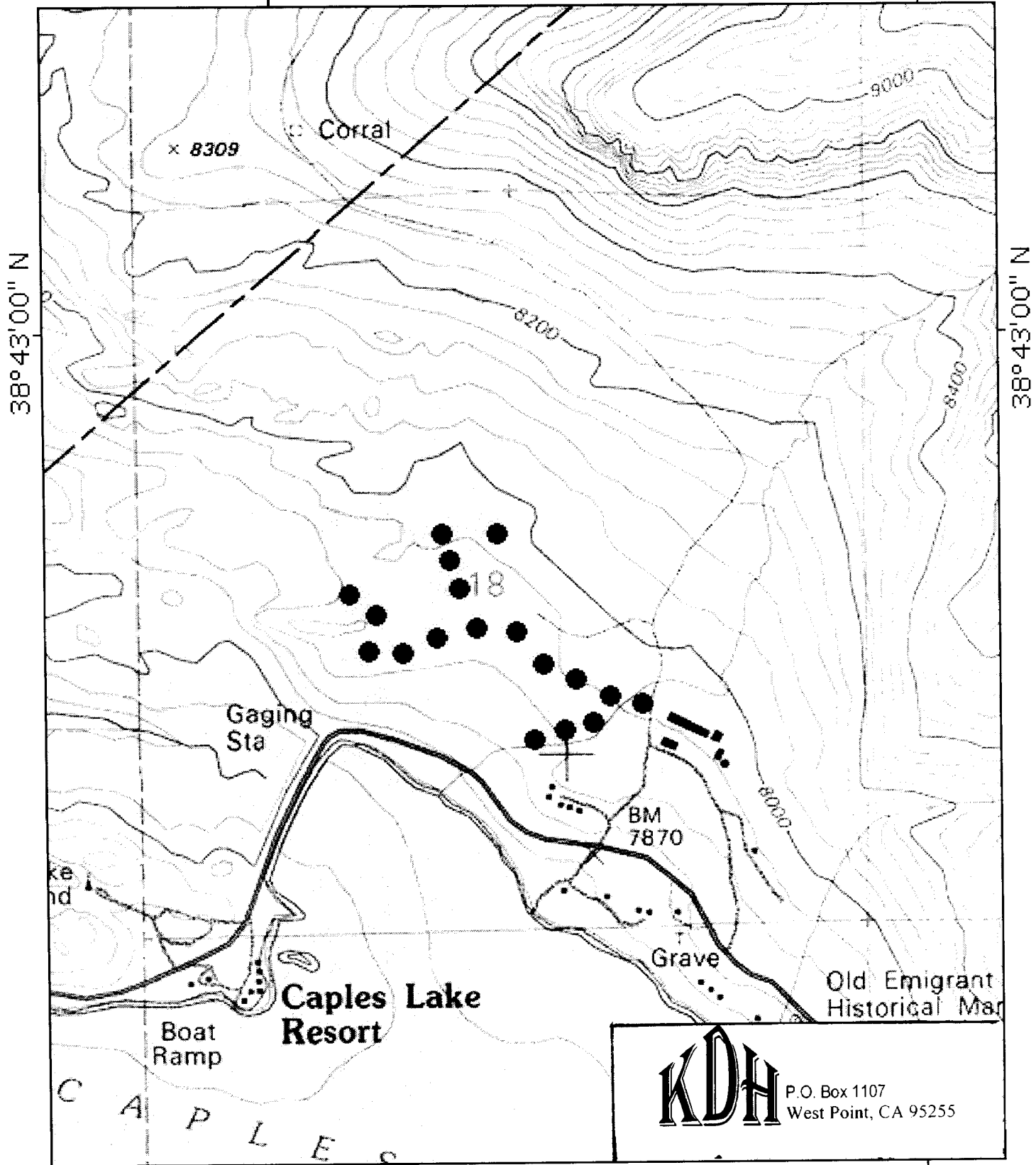
If you have any questions regarding the surveys conducted or this summary report, please feel free to call me at (209) 293-4240.

Sincerely,



Katie Hood
Wildlife Biologist

Map 1 - Willow Flycatcher Survey Stations, Caples Maintenance Station
 120°03'00" W WGS84 120°02'00" W

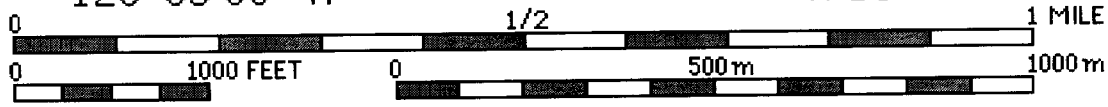
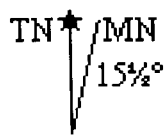


38°43'00" N

38°43'00" N

120°03'00" W

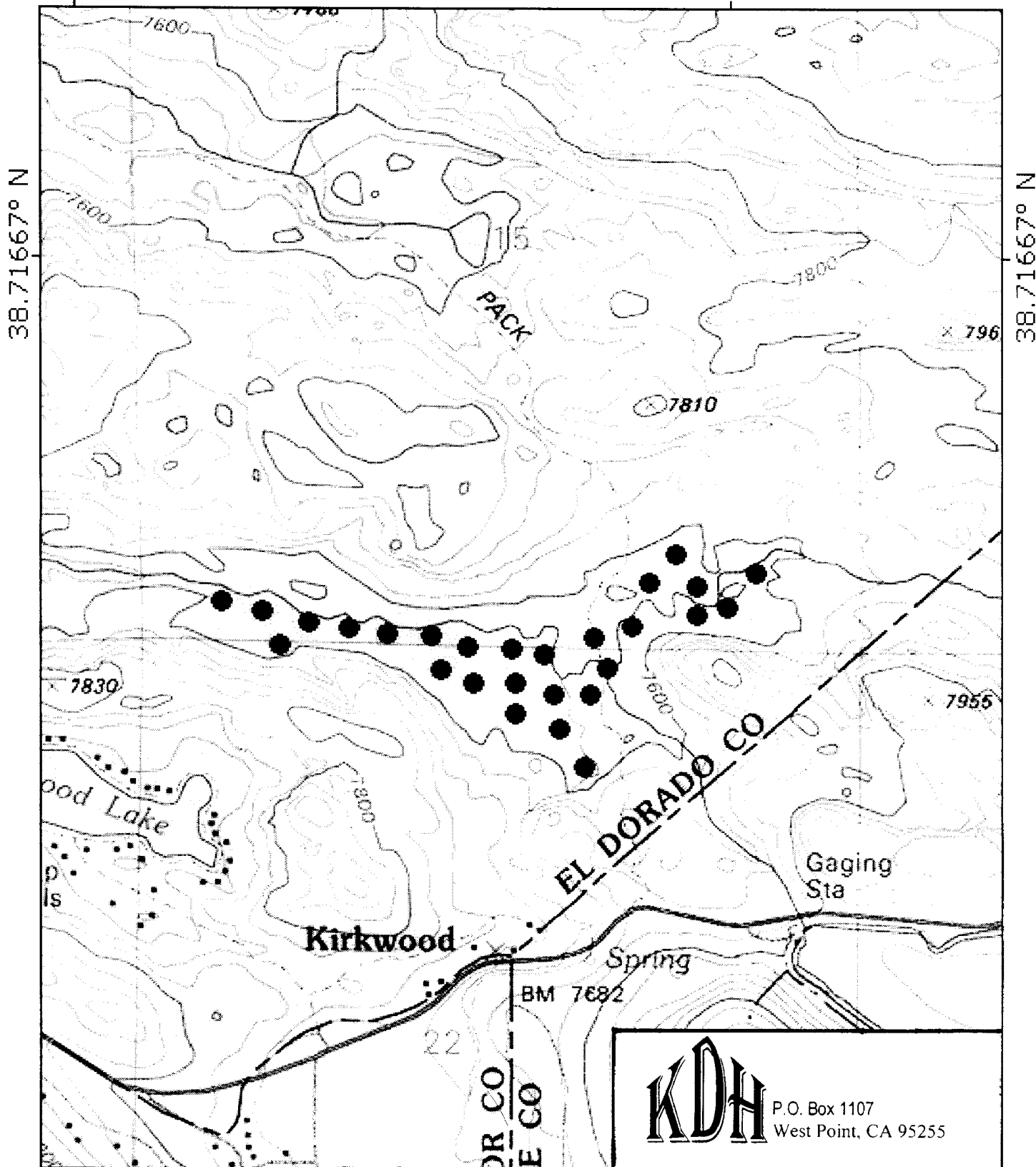
WGS84 120°02'00" W



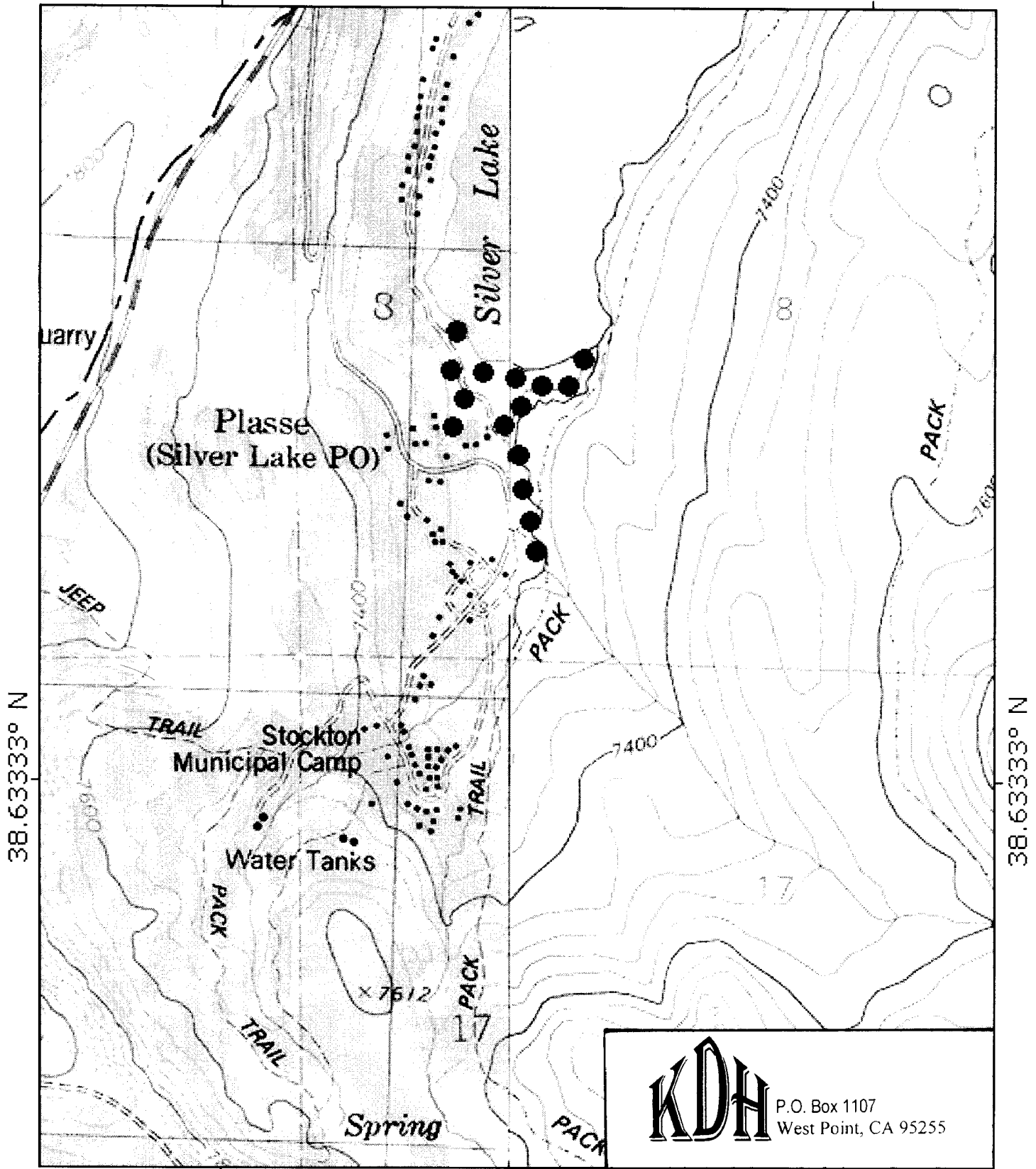
Printed from TOPO! ©1999 Wildflower Productions (www.topo.com)

KDH P.O. Box 1107
 West Point, CA 95255

Map 2 - Willow Flycatcher Survey Stations, Caples Creek Survey Area
120.08333° W WGS84 120.06667° W

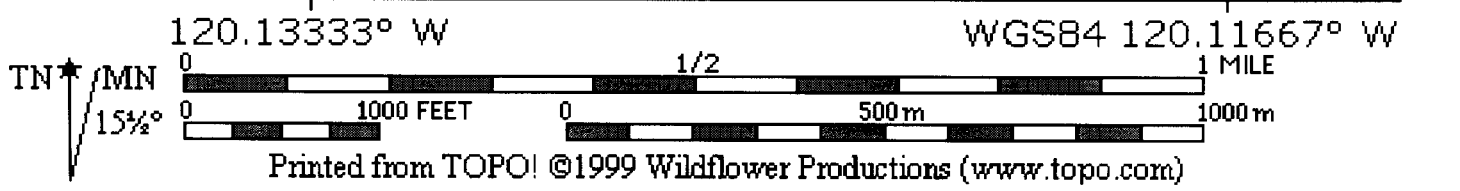


Map 3 - Willow Flycatcher Survey Stations, Plasse Meadow Survey Area
120.13333° W WGS84 120.11667° W



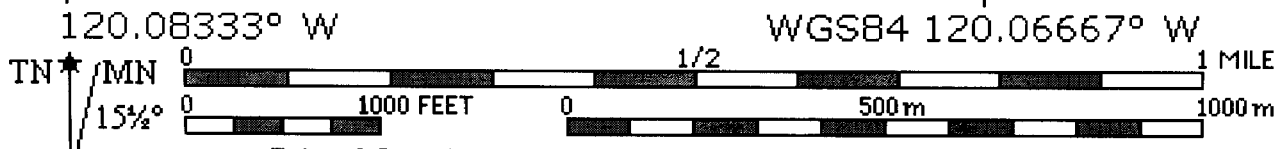
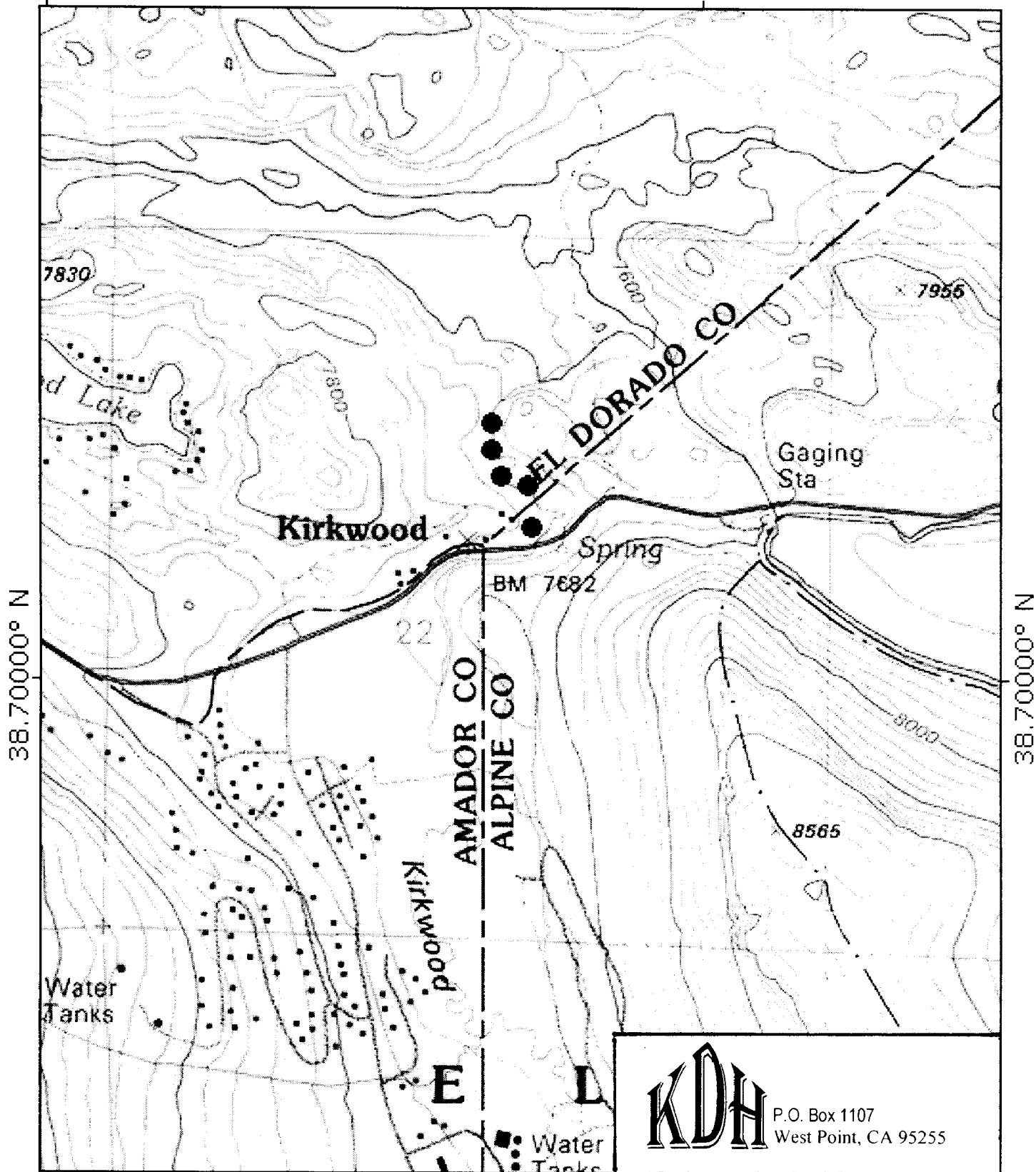
38.63333° N

38.63333° N



KDH P.O. Box 1107
West Point, CA 95255

Map 4 - Willow Flycatcher Survey Stations, Kirkwood Inn Survey Area
120.08333° W WGS84 120.06667° W



KDH
P.O. Box 1107
West Point, CA 95255